

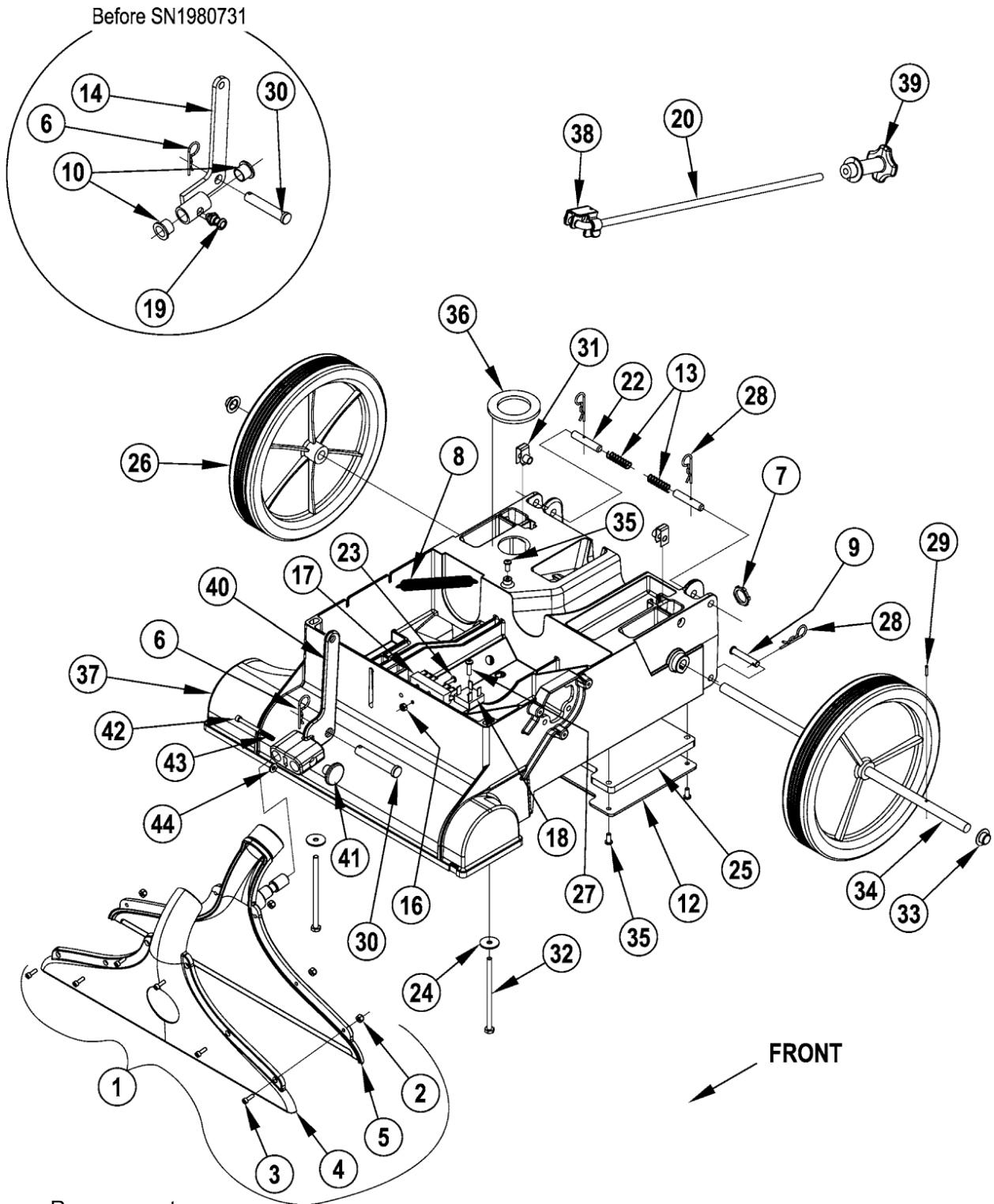
PARTS LIST



2021.06.08

TABLE OF CONTENTS

Base system	1
Brush system	3
Decal system	5
Handle system 16	7
Recovery system	9
Solution pump system	11
Solution tank assembly	13
Wiring diagram 120V/100V	15
Wiring diagram 230V	17
Accessories	19
Wand assembly	21
56265226 / 56265227 - Pump, 60 PSI, Bypass Kit	23
56265243 - Brush Adjustment Lever Kit	25
56265150 - Squeegee Assembly	27



Resource notes:

NOTE 1: Part number 56265116 is obsolete and replaced by 56265243 which consists of Items (40-44).

Pos.	Product no	QTY	Description	Notes
0-	56265243	1	BRUSH ADJUSTMENT LEVER KIT	[1]
1	56265067	1	SHOE ASSEMBLY 16	[2]
2	56002877	6	NUT HEX NYL LOC SS 8-32	
3	56002959	1	PIN COT HAIR SS.090XDIA.50/.75	
7	56009095	1	NUT CONDUIT LOCK 1/2-14	
8	56398606	1	SPRING EXT .50X6.25CT433G	
9	56321404	2	PIN-CLEVIS-5/16 X 1.875	
10	56171095	2	BEARING FLANGE.625 E00201	[3]
12	56265172	1	EXHAUST PANEL	
13	56228142	2	SPRING COM .48X1.50 E00453	
16	56002865	1	NUT HEX NYL LOC-THIN 8-32	
17	56260071	1	TERMINAL BLOCK	
18	56265103	1	RECTIFIER 35 AMP	
19	56365548	1	LOCK ASSY CV12JX	[3]
20	56265100	1	ROD BRUSH ADJUSTMENT	
22	56265073	2	PIN PIVOT	
23	56002146	1	SCR PAN PHIL 8-32 X .62	
24	56009060	2	WSH FLT SS .260X1.000X.074	
25	56265071	1	GASKET EXHAUST	
26	56249505	2	WHEEL 10 1/2 BUSHING 1.75	
27	56003091	1	SCR PHIL PLASTITE 10-14 X .75	
28	56003120	4	PIN COT HAIR.093XDIA .25-.50	
29	56003133	1	PIN-SPR .12 X .56	
30	56003207	1	CLEVIS PIN	
31	56003690	2	NUT U MULTI-THREAD M8 X 1.25	
32	56003691	2	SCR HEX LOC SS 1/4-20 X 4.50	
33	56009097	2	NUT PUSH CAP 1/2	
34	56265057	1	AXLE	
35	56009191	5	SCR PAN PHIL PLASTITE10-14X.50	
36	56200573	1	GASKET RING 1.75 IDHL16	
37	56265020	1	BASE EXTRACTOR 16	
38	56265031	1	CLIP ADJUSTMENT ROD	
39	56109548	1	KNOB ADJUST	
40	56265237	1	LEVER BRUSH ADJUSTMENT	[4]
41	56265239	1	KNOB	[4]
42	56003761	1	SCR SOC HD SS 10-32 X 1.50	[4]
43	56201448	1	SPRING COM .25X.750 E00453	[4]
43	56384068	1	SPRING-LEFT WOUND-.255 O.D.	[5]
44	56002916	1	WSH FLT SAE SS 10	[6]

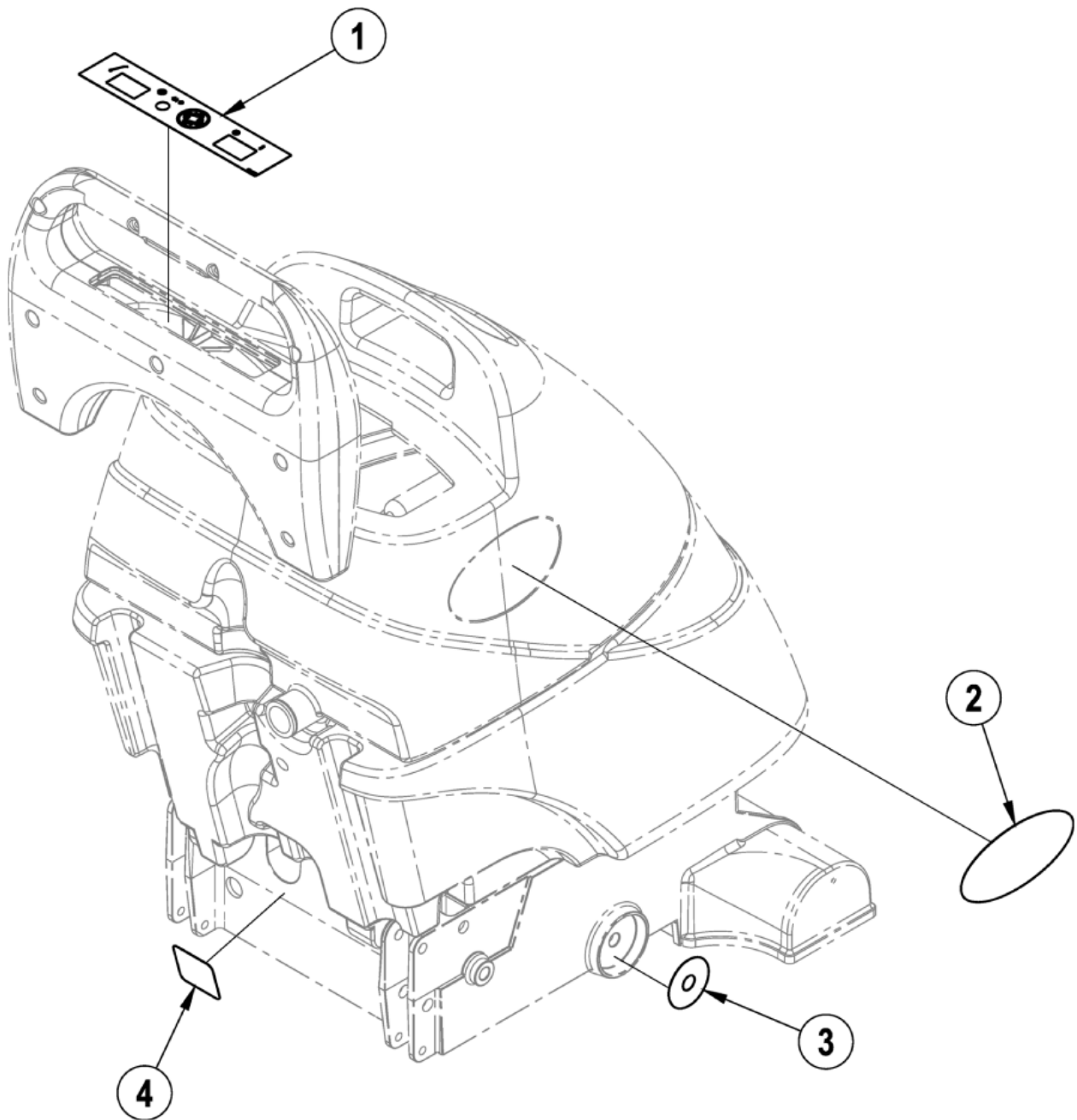
Part Notes:

- [1] - BEFORE SN1980731 / NOTE 1
- [2] - (ITEMS 2-5)
- [3] - BEFORE SN1980731
- [4] - AFTER SN1980730
- [5] - after SN1980730. Revised or new since last update
- [6] - AFTER SN198073

Pos.	Product no	QTY	Description	Notes
01		1	SHEAVE POLY-V 6J17 - NOT AVAILABLE	[1]
01		1	BEARING, BALL - NOT AVAILABLE	[2]
01	56265204	1	BEARING SPINDLE KIT FOR AG-16	
01		1	WASHER, BEARING - NOT AVAILABLE	[3]
01		1	SPINDLE, DRIVE - NOT AVAILABLE	[4]
01		1	BEARING, BALL - NOT AVAILABLE	[2]
01		1	BEARING, BLOCK - NOT AVAILABLE	[5]
02	56262558	1	SHEAVE POLY-V	
03	56002849	1	NUT HEX NYL LOC-THIN SS 10-24	
04	56001854	4	SCR HEX 1/4-20 X .50	
05	56002098	4	H FLT SAE 1/4	
06	56002900	1	SCR PAN PHIL SS 10-24 X .50	
07	56009131	2	SCR SOC SET LOC 5/16-18X.31	
08	56265024	1	POLY V BELT FOR AG-16	
09	56265043	1	CLIP BRUSH RETAINER	
10	56265047	1	BELT GUARD	
11	56265075	1	MOTOR 1/3 HP 115V IMPERIAL	[6]
11	56265076	1	MOTOR 230VDC 1/3HP	[7]
12	56265091	1	COVER PULLEY FOR AG-16	
13	56009191	3	SCR PAN PHIL PLASTITE10-14X.50	
14	56265044	1	BRUSH ASSEMBLY 16	
14	56265046	1	BRUSH 16	

Part Notes:

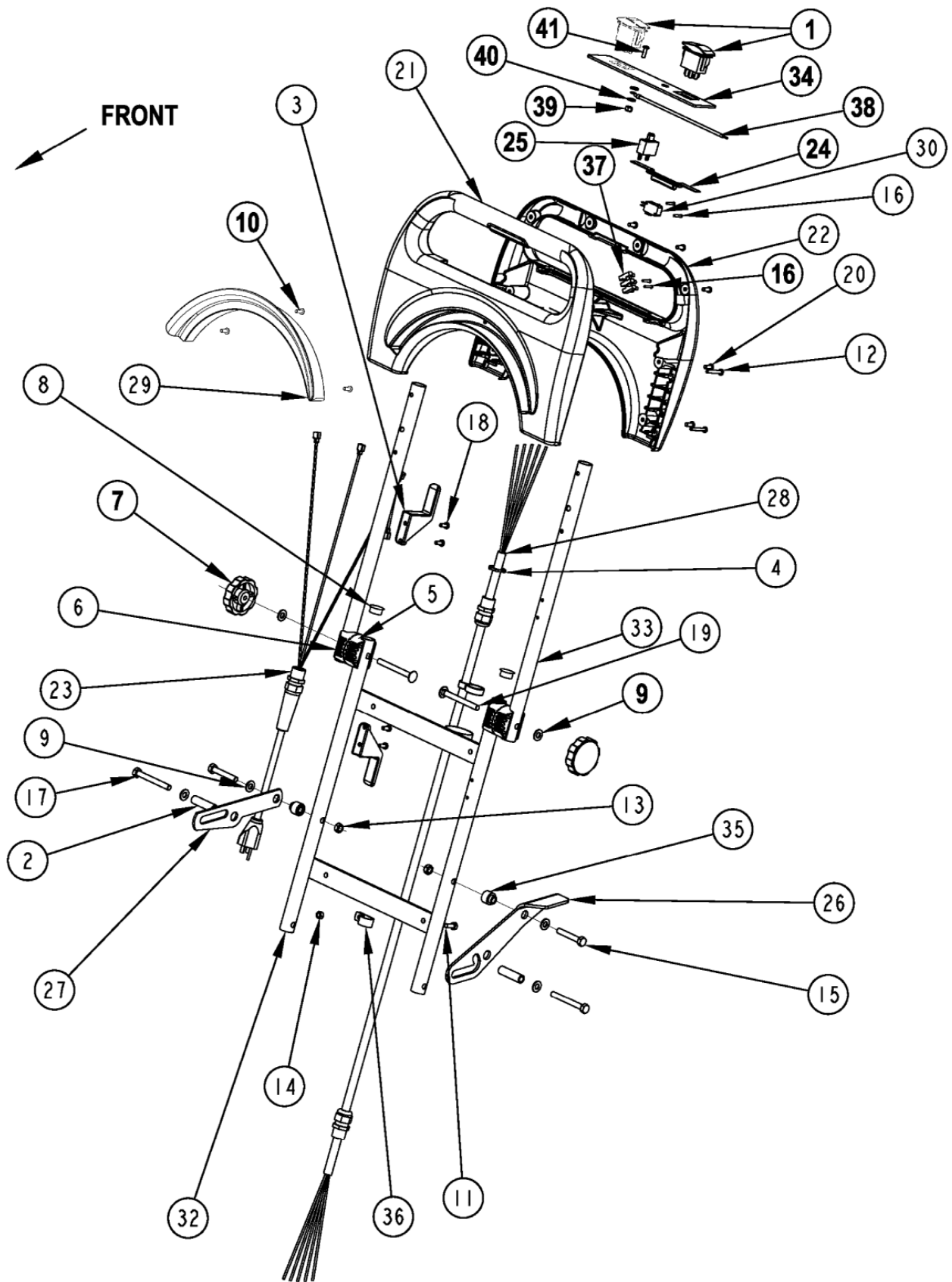
- [1] - SHEAVE POLY-V 6J17 - NOT AVAILABLE
- [2] - BEARING, BALL - NOT AVAILABLE
- [3] - WASHER, BEARING - NOT AVAILABLE
- [4] - SPINDLE, DRIVE - NOT AVAILABLE
- [5] - BEARING, BLOCK - NOT AVAILABLE
- [6] - (AX 410 J)
- [7] - (AX 410)
TSB-FC-2016-251 Sheave alignment



Pos.	Product no	QTY	Description	Notes
01	56016720	1	DECAL PANEL	[1]
01	56016716	1	DECAL PANEL 1 SW	[2]
02	56016724	2	DECAL NILFISK AX410	
03	56109693	1	DECAL-NOZZLE SELECTOR	
04	56016718	1	DECAL BRUSH PRESSURE	

Part Notes:

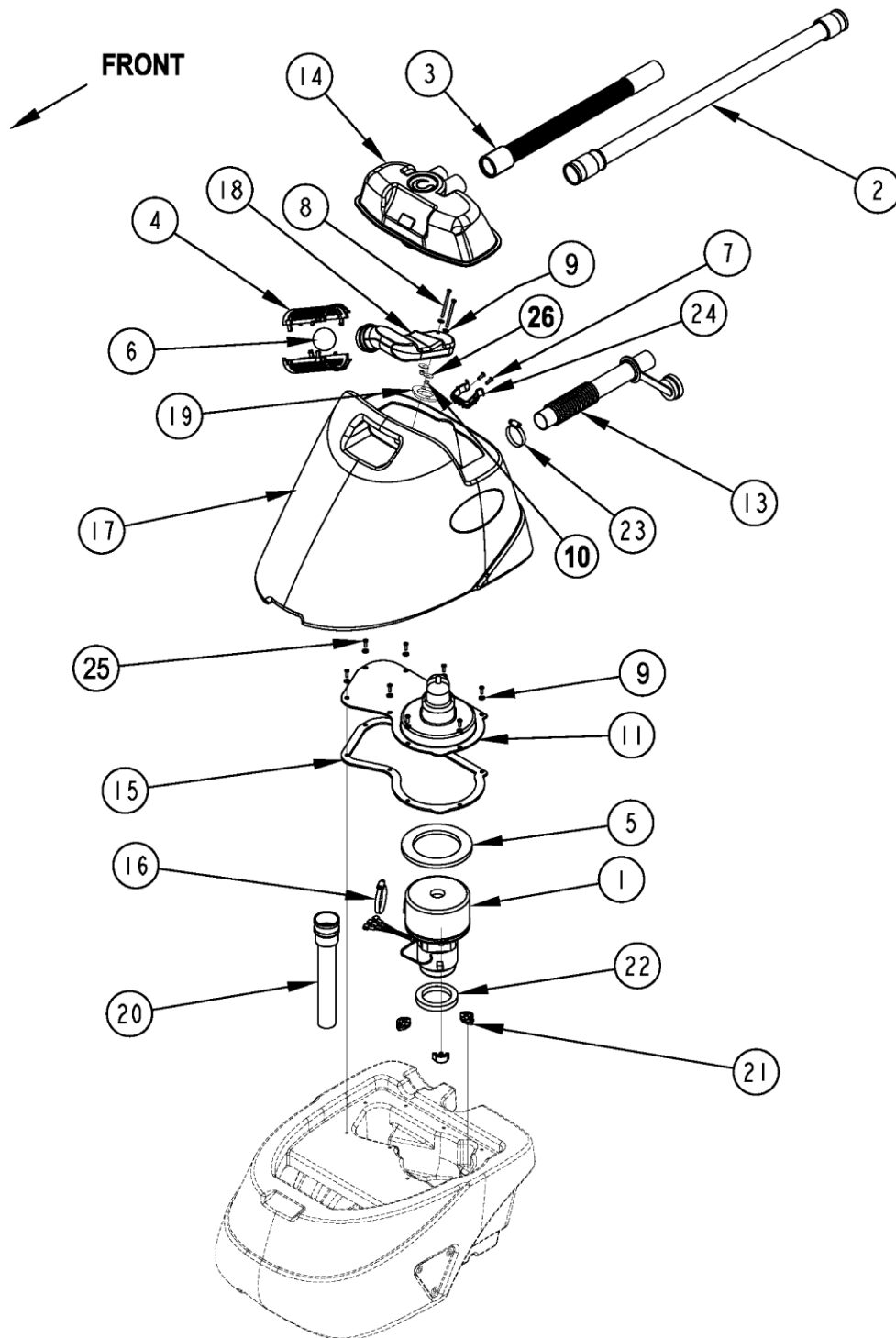
- [1] - (AX 410)
- [2] - (AX 410 J)



Pos.	Product no	QTY	Description	Notes
01	56381823	1	SWITCH ROCKER DPDT ON-OFF-ON	[1]
01	56381824	2	SWITCH ROCKER DPDT ON-ON	[2]
02	56265167	2	BUSHING .34 X .50 X 1.84	
03	56262518	2	CORD HOOK FOR AG-16 & 18	
04	56009095	2	NUT CONDUIT LOCK 1/2-14	
05	56264118	2	RATCHET HANDLE ADJ.	
06	56264123	2	RATCHET HANDLE ADJ.	
07	1047	2	KNOB HANDLE RATCHET	
08	56900041	2	PLUG CAP E00046	
09	56001939	4	WSH FLT SAE 5/16	
10	56001993	3	SCREW 10-24 X 0.5 ZINC PL	
11	56003441	1	SCR HEX LOC M6-1.00X16MM	
12	56002824	4	SCR PAN PHIL 10-24X1.25	
13	56003389	2	NUT HEX NYL-LOC M8X1.25	
14	56003350	1	NUT HEX M6	
15	56003210	2	SCR HEX M8-1.25 X 50MM	
16	56003092	4	SCR.PAN.PHIL.4-20X .62PLASTITE	
17	56003700	2	SCR HEX M8-1.25 X 70MM	
18	56009029	4	SCR PANPHIL THD FORM 10-24X.50	
19	56009136	2	SCR CARRIAGE 5/16-18X3.00	
20	56009191	9	SCR PAN PHIL PLASTITE10-14X.50	
21	56265028	1	COVER HANDLE FRONT	
22	56265029	1	COVER HANDLE REAR	
23	56265217	1	POWER CORD 40FT JAPAN	[1]
23	56265115	1	CORD SET 3 X 1.5 YELLOW	[2]
24	56265053	1	BUTTON SPRAY	
25	56265056	1	CIRCUIT BREAKER	[1]
25	56265104	1	CIRCUIT BREAKER 4 AMP	[2]
26	56265058	1	LATCH HANDLE	
27	56265059	1	STRAP HANDLE	
28	56265085	1	MAIN CABLE ASSEMBLY	
29	56265090	1	HOOK HANDLE COVER	
30	56265098	1	SWITCH SPDT SNAP ACTION	
32	56265123	1	LOWER HANDLE WELDMENT	
33	56265143	2	TUBE HANDLE	
34	56265055	1	PANEL CONTROL	[3]
34	56265159	1	PANEL CONTROL	[4]
35	56265199	2	BUSHING FLANGE	
36	56486112	1	CLAMP P	
37	56183523	1	TERMINAL BLOCK	
39	56002873	1	NUT HEX NYL LOC 10-32	
40	56001954	2	WSH FLT SAE 10	
41	56002202	1	SCR PAN PHIL 10-32 X .62	

Part Notes:

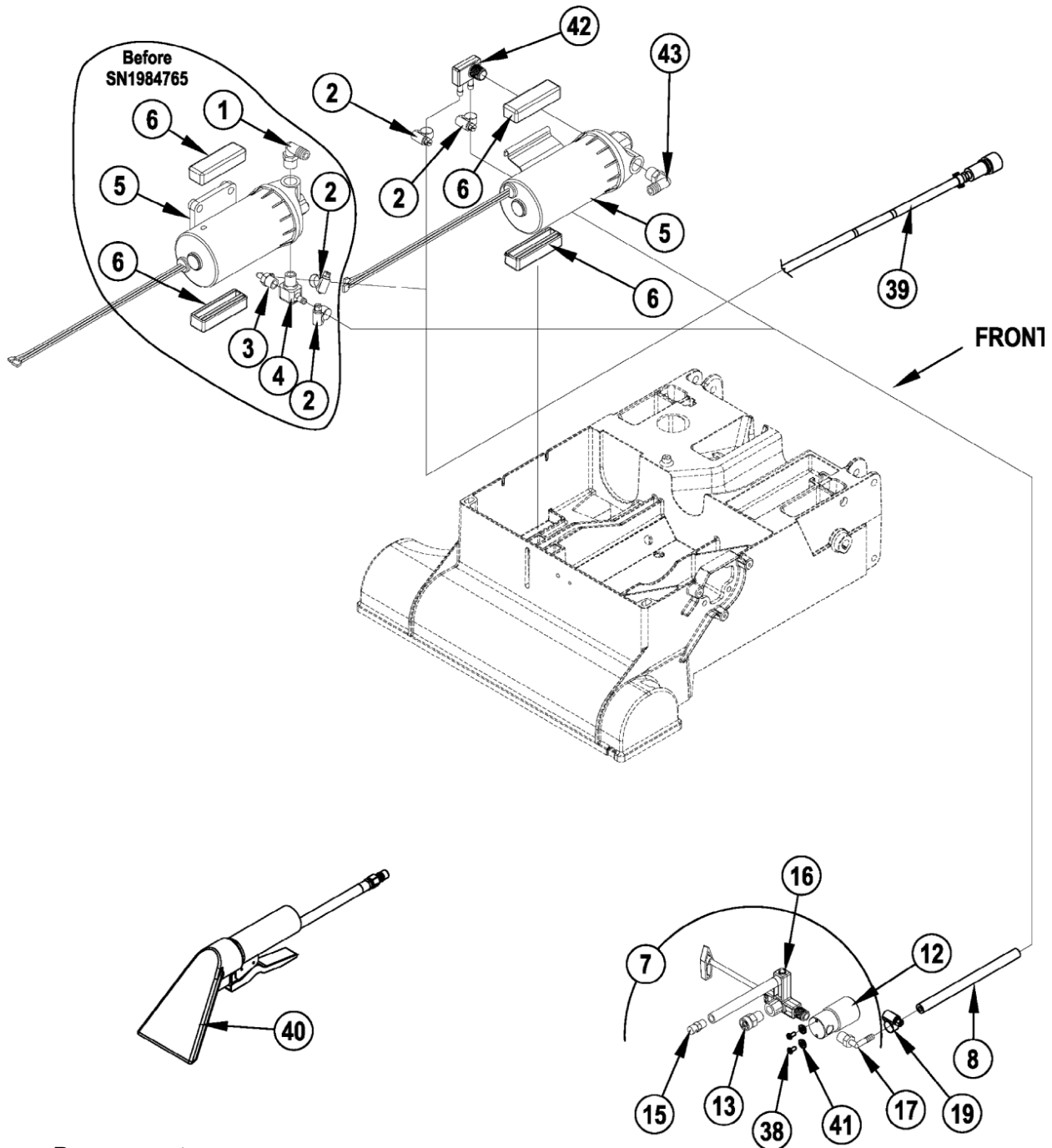
- [1] - (AX 410 J)
- [2] - (AX 410)
- [3] - (AX 410) TSBUS2010-1078
- [4] - (AX 410 J) TSBUS2010-1078



Pos.	Product no	QTY	Description	Notes
01	56265096	1	MOTOR VAC 120V	[1]
1	56265117	1	VAC MOTOR-240 VAC	[2]
1	56264453	1	1 PAIR-BRUSH VAC MOTOR 833423-	[3]
1	56264452	1	BRUSH MECHANISM 240V	[4]
2	56265145	1	VAC HOSE 1.50 X 34.00 X 975018	[5]
2	56265142	1	VAC HOSE ASSY1.50X48.00X975018	[6]
2	56265211	1	VAC HOSE ASSY1.50X54.00X975018	[7]
3	56265158	1	VAC HOSE 1.50 STRETCH	[5]
4	56324497	2	FLOAT CAGE	
5	56385437	1	GASKET CL281H	
6	56391690	1	BALL FLOAT	
7	56002124	2	SCREW10-24 X .62 PNH PH	
8	56003809	2	SCR-HEX SS 10-24 X 2.00	
9	56009205	10	WSH FLT SS .219X.500X.047/.062	
10	56002836	2	NUT HEX NYL LOC SS 10-24	
11	56265030	1	COVER VAC MOTOR	
13	56265034	1	HOSE DRAIN 1.50 INCH	
14	56109528	1	RECOVERY LID ASSY	
15	56265072	1	GASKET VAC COVER	
16	56440213	1	CLAMP HOSE SAE 32E00047	
17	56265022	1	TANK RECOVERY	
18	56265134	1	DUCT FLOAT	
19	56265163	1	GASKET	
20	56265202	1	VAC HOSE ASSEMBLY	
21	56314484	3	MOUNT VIBRATION	[8]
22	56314760	1	GASKET VACUUM DUCT	
23	1518	1	HOSE CLAMP 3/4 X 1 3/4 SS	
24	56331154	1	CLAMP PLASTIC	
25	56002900	8	SCR PAN PHIL SS 10-24 X .50	
26	56009096	2	WSH FLT .193X.875X.060	

Part Notes:

- [1] - (AX 410 J)
- [2] - (AX 410)
- [3] - For 56265096 (one pair)
- [4] - For 56265117 (one pair)
- [5] - 16XP, 18FLX
- [6] - 16ST
- [7] - 18ST
- [8] - EXPIRED NO REPLACEMENT



Resource notes:

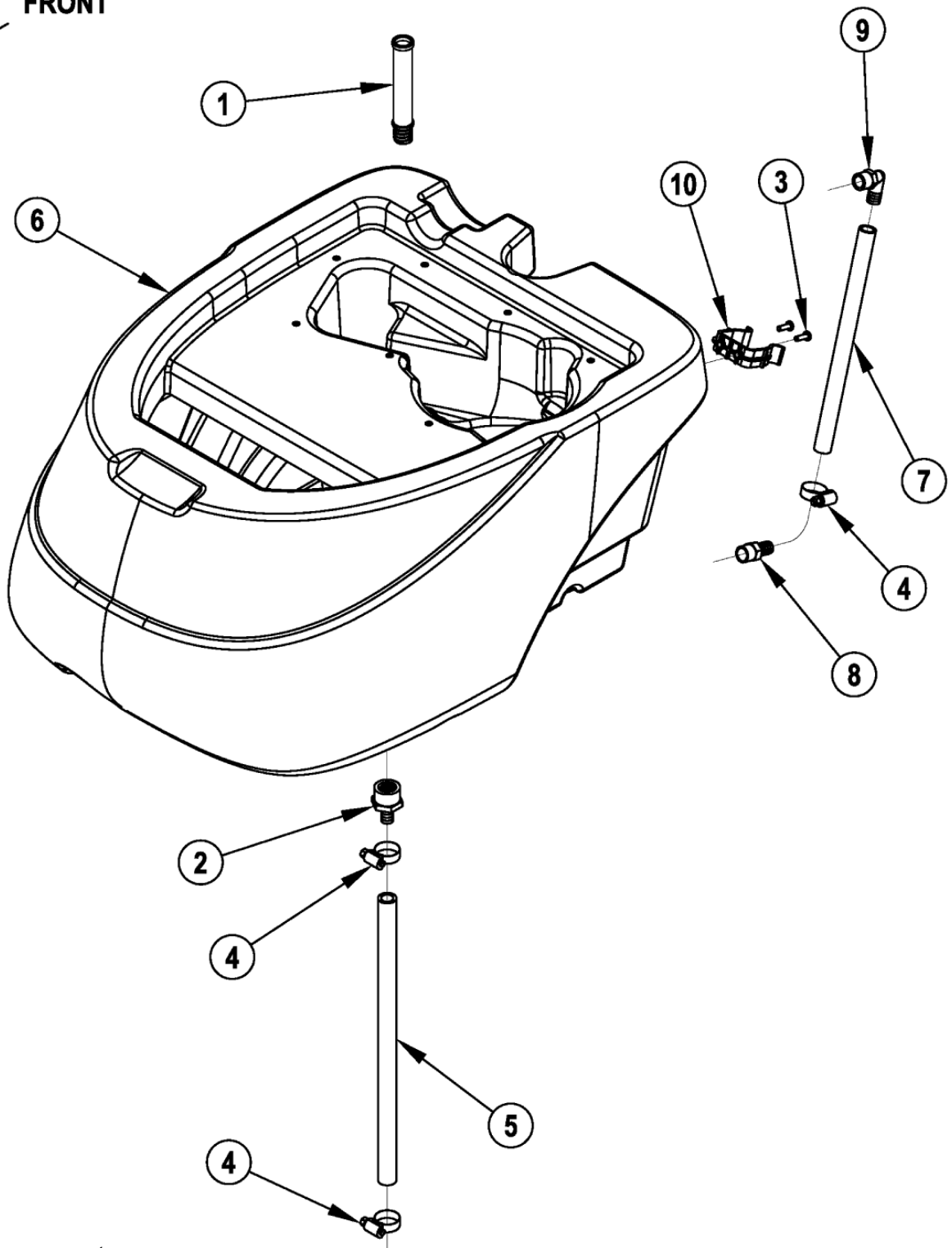
NOTE 1: First generation - 56409507 used before December 2007. Second generation - 56900069 used from December 2007 through August 2008. Third generation - 56109566 used after August 2008. NOTE 2: As of serial number 1000031068 Nozzle / Valve Assy 16 56265039 is obsolete and replaced by Nozzle-Valve Assy-16 56109512. If you need to replace any of the subcomponents from 56265039 please order the entire new assembly 56109512. NOTE 3: As of serial number 1000031068 Nozzle / Valve Assy 18 56265140 is obsolete and replaced by Nozzle-Valve Assy-18 56109511. If you need to replace any of the subcomponents from 56265140 please order the entire new assembly 56109511.

Pos.	Product no	QTY	Description	Notes
01	56109566	1	BARB 90 ELBOW 1/2 X 3/8 NPT	[1]
02	56756364	2	CLAMP HOSE SAE 4 E00047	
03	56470138	1	BARB 1/4 X 90 DEG E00037	
04	56264382	1	ADAPTOR BARBED	
05	56265224	1	PUMP 115V	[2]
05	56265051	1	PUMP 115V	[3]
05	56265223	1	PUMP 230V	[4]
05	56265050	1	PUMP 230V	[5]
06	56265033	2	MOUNT PUMP FOR AG-16	
07	56109511	1	NOZZLE-VALVE ASSY-16 230V	[6]
07	56382848	1	KIT NOZZLE AND VALVE ASM 16	[7]
08	56264346	1	HOSE .250 X 10.00 E00160	[8]
08	56260841	1	TUBE 1/4 X 7 BRAID E00160	[9]
12	56265114	1	VALVE SOLENOID 230V	[10]
12	56265037	1	VALVE SOLENOID 115V	[11]
13	56265038	1	NOZZLE SPRAY VEEJET	
15	56265052	1	NOZZLE SPRAY	
16	56109691	1	VALVE ASSY - 16	[12]
17	56470138	1	BARB 1/4 X 90 DEG E00037	
19	56756364	1	CLAMP HOSE SAE 4 E00047	
38	56003018	2	SCREW 8-32 X 3/8 PHN PH SS	
39	56265168	1	SOLUTION HOSE ASSEMBLY	
40	56220109	1	HAND TOOL	
41	56002875	2	WSH FLT SAE SS 8	
42	56109503	1	DOUBLE BARB ASSEMBLY	[13]
43	56109566	1	BARB 90 ELBOW 1/2 X 3/8 NPT	[14]

Part Notes:

- [1] - BEFORE SN1984765 / TSBUS2007-961 and 961-1
TSB US 2007-961. Solution Leakage and Low Solution Flow
TSB US 2007-961-1. Solution Leakage
- [2] - (AX 410 J) AFTER SN1984764
- [3] - (AX 410 J) BEFORE SN1984765
- [4] - (AX 410) AFTER SN1984764
- [5] - (AX 410) BEFORE SN1984765
- [6] - (AX 410) (ITEMS 12,13,15-17) NOTE 2
- [7] - (AX 410 J) (ITEMS 12,13,15-17) NOTE 3
- [8] - AFTER SN1984764
- [9] - BEFORE SN1984765
- [10] - (AX 410) TSBUS2007-966
- [11] - (AX 410 J) TSBUS2007-966
- [12] - (AX 410)
- [13] - NOTE 3 AFTER SN1984764
- [14] - NOTE 1

FRONT
↙



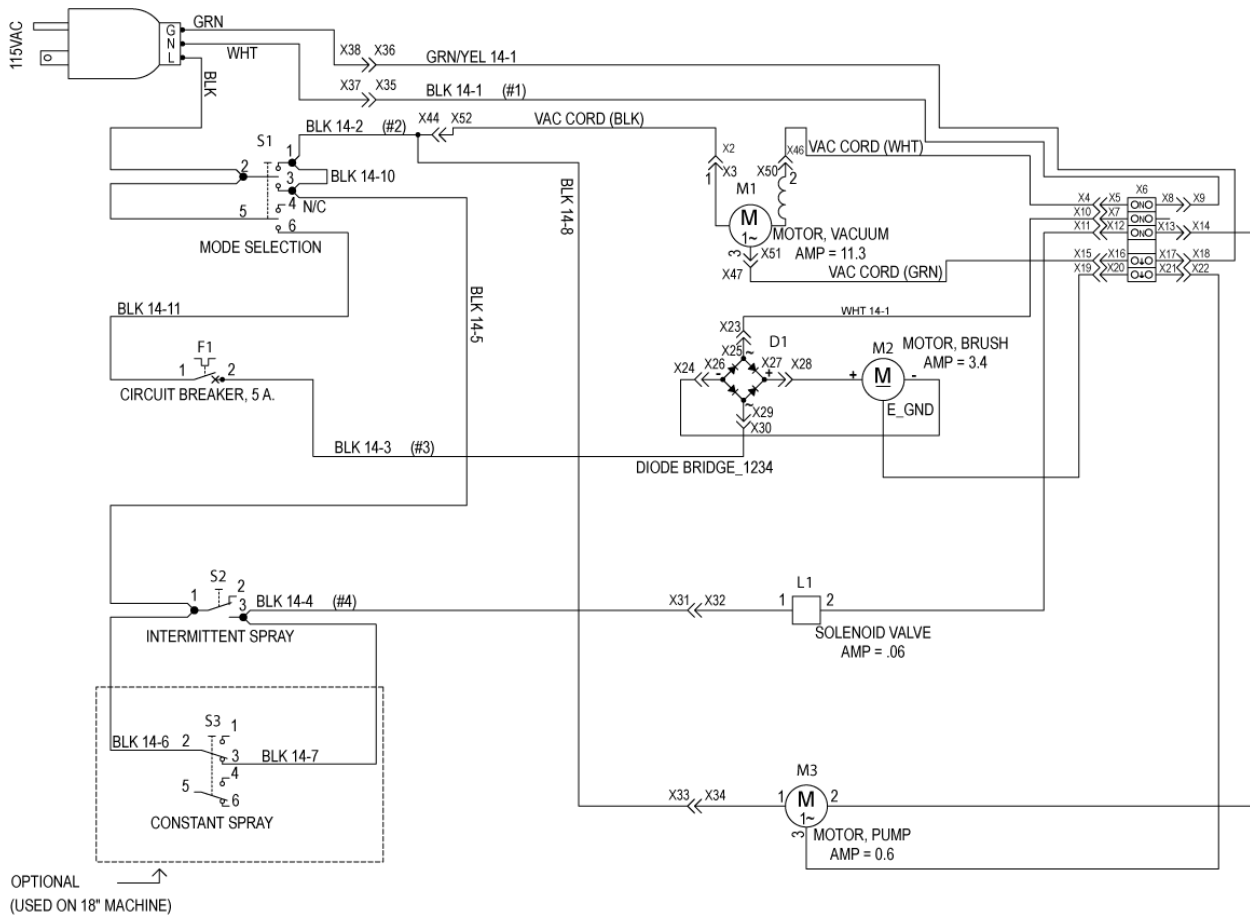
Resource notes:

NOTE 1: Hose 56266108 has been replaced by Hose 56407267.

Pos.	Product no	QTY	Description	Notes
01	56264137	1	SCREEN FOR AG-16 & 18	
02	56262190	1	BARB	[1]
03	56002124	2	SCREW10-24 X .62 PNH PH	
04	56219932	3	CLAMP HOSE SAE 6 E00047	
05	56387302	1	TUBE PVC .500X11.00 E00604	[2]
05	56407267	1	HOSE SPIRAL E00604	[3]
06	56265021	1	TANK SOLUTION	
07	56387302	1	TUBE PVC .500X11.00 E00604	
08	56109565	1	BARB ADAPTER 1/2 X 3/8 NPT	
09	56109566	1	BARB 90 ELBOW 1/2 X 3/8 NPT	
10	56331154	1	CLAMP PLASTIC	

Part Notes:

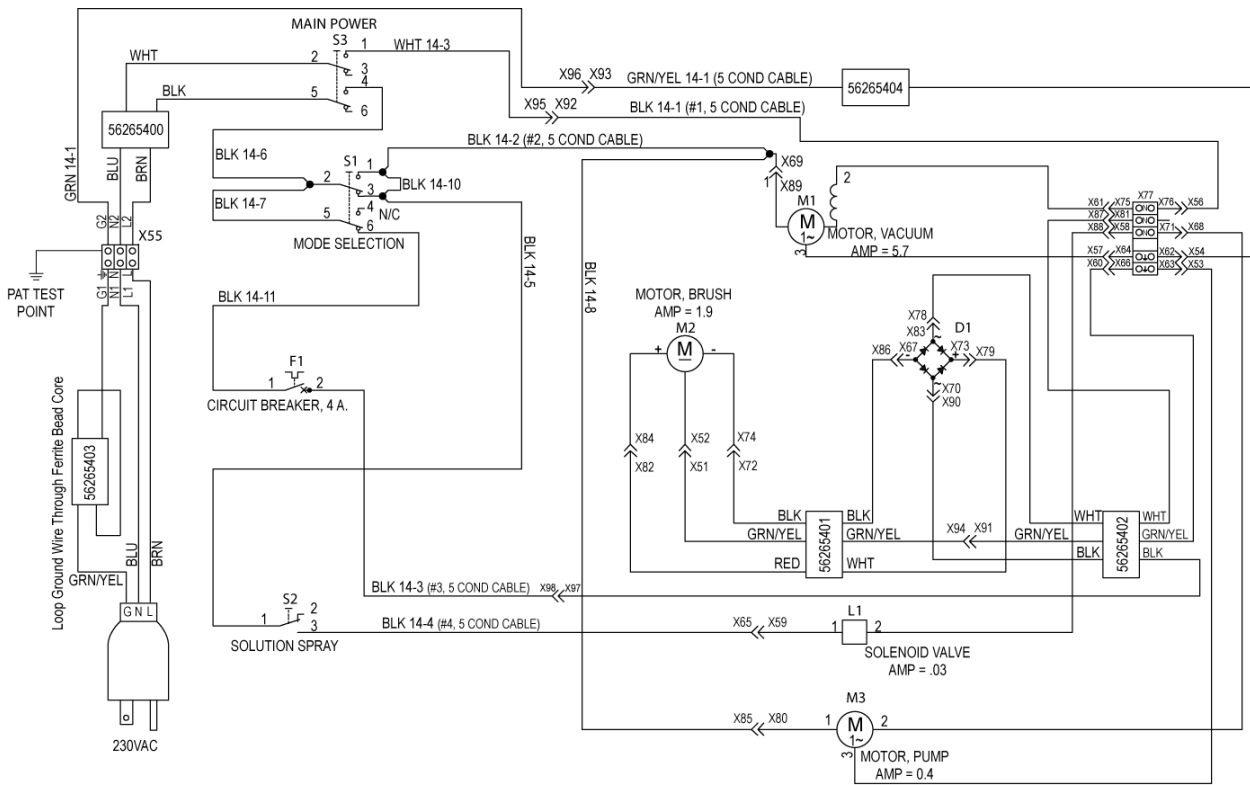
- [1] - TSBUS2007-961 and 961-1
- [2] - BEFORE SN1984765
- [3] - AFTER SN1984764 NOTE1



Pos.	Product no	QTY	Description	Notes
00	56265187	1	VAC EXTENSION CORD	[1]
00	56265087	1	WIRE ASSEMBLY	[1]
00	56265102	1	WIRE ASSEMBLY	[2]
D1	56265103	1	RECTIFIER 35 AMP	
F1	56265056	1	CIRCUIT BREAKER	
L1	56265037	1	VALVE SOLENOID 115V	[3]
M1	56265096	1	MOTOR VAC 120V	
M1	56264453	1	1 PAIR-BRUSH VAC MOTOR 833423-	[4]
M2	56265075	1	MOTOR 1/3 HP 115V IMPERIAL	
M3	56265224	1	PUMP 115V	[5]
M3	56265051	1	PUMP 115V	[6]
S1	56381823	1	SWITCH ROCKER DPDT ON-OFF-ON	
S2	56265098	1	SWITCH SPDT SNAP ACTION	
S3	56381824	1	SWITCH ROCKER DPDT ON-ON	

Part Notes:

- [1] - Not shown
- [2] - Not shown
SEE PI 2017-002
- [3] - TSBUS2007-966
- [4] - For 56265096 - one pair
- [5] - After SN1984764
- [6] - Before SN1984765



Pos.	Product no	QTY	Description	Notes
00	56265401	1	EMI FILTER ASSEMBLY	[1]
00	56265403	1	EMI FERRITE BEAD CORE	[1]
00	56265187	1	VAC EXTENSION CORD	[1]
00	56265110	1	WIRE ASSEMBLY	[1]
00	56265087	1	WIRE ASSEMBLY	[1]
00	56265404	1	EMI FERRITE BEAD CORE	[1]
00	56265402	1	EMI FILTER ASSEMBLY	[1]
00	56265400	1	EMI FILTER ASSEMBLY	[2]
D1	56265103	1	RECTIFIER 35 AMP	
F1	56265104	1	CIRCUIT BREAKER 4 AMP	
L1	56265114	1	VALVE SOLENOID 230V	[3]
M1	56264452	1	BRUSH MECHANISM 240V	
M1	56265117	1	VAC MOTOR-240 VAC	
M2	56265076	1	MOTOR 230VDC 1/3HP	
M3	56265050	1	PUMP 230V	[4]
M3	56265223	1	PUMP 230V	[5]
S1	56381824	1	SWITCH ROCKER DPDT ON-ON	
S2	56265098	1	SWITCH SPDT SNAP ACTION	
S3	56381824	1	SWITCH ROCKER DPDT ON-ON	

Part Notes:

- [1] - Not shown
- [2] - Not shown
EXPIRED ON 11/11/2020
- [3] - TSBUS2007-966
- [4] - Before SN1984765
- [5] - After SN1984764

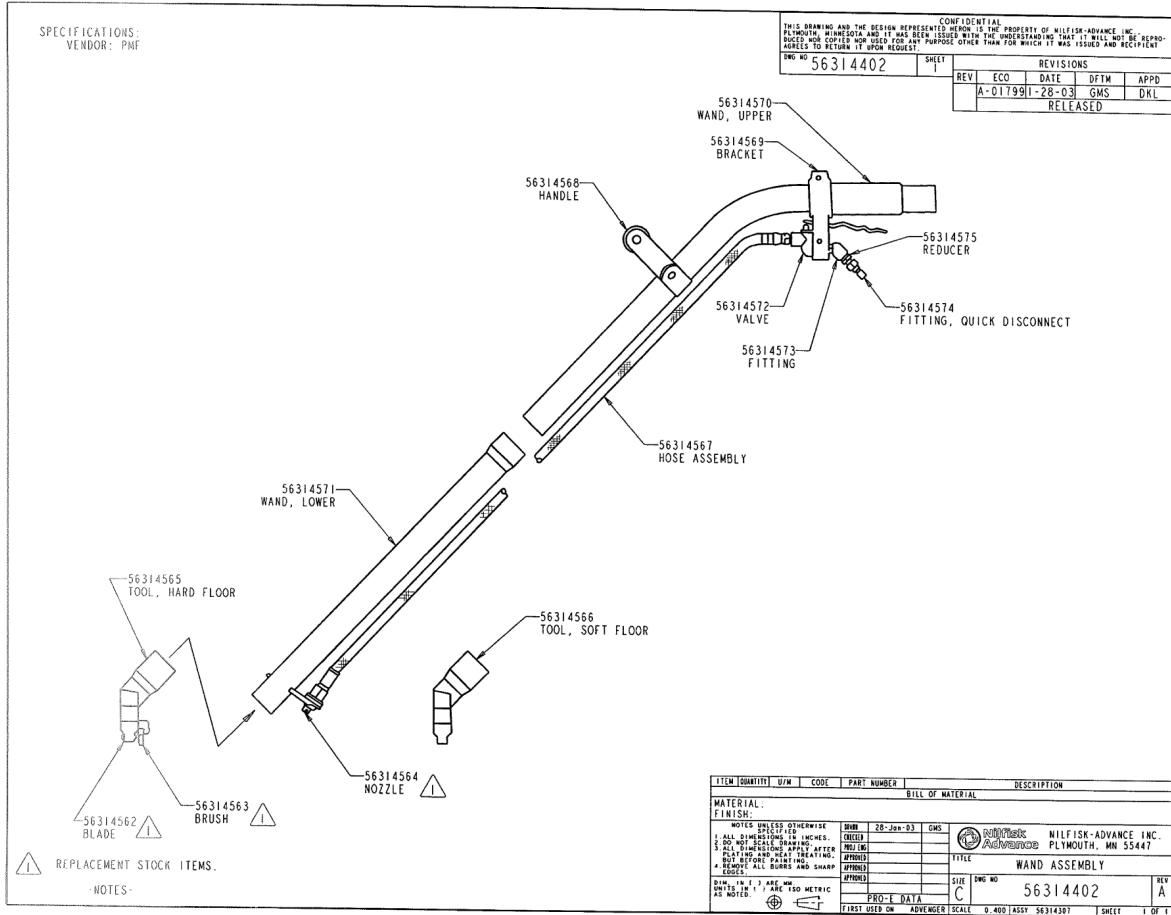
**No
Diagram
Available**

**Parts List
Only**

Resource notes:

Pos.: 1-14 - Accessory tools Pos.: 20 - Optional Brushes

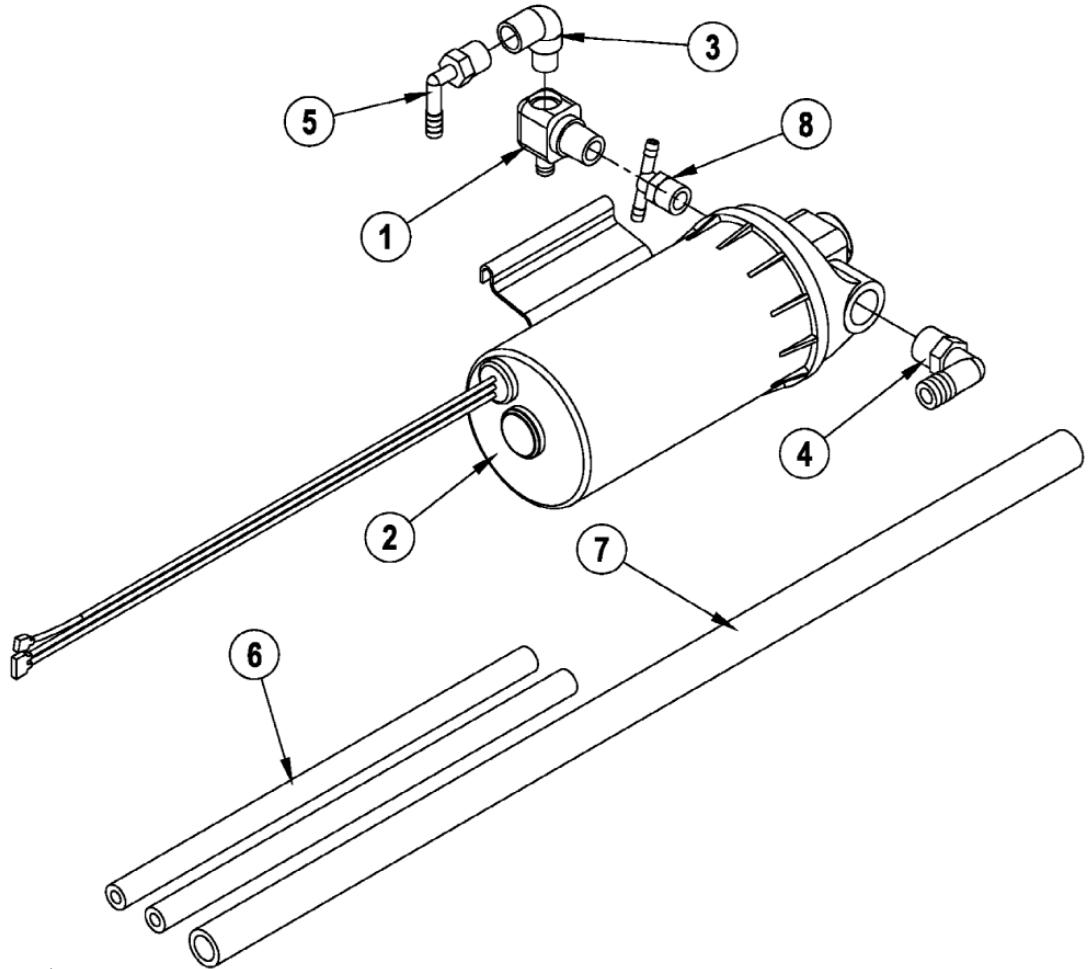
Pos.	Product no	QTY	Description	Notes
	56265044	1	BRUSH ASSEMBLY 16	
	56265175	1	BRUSH ASSEMBLY BLUE 16 HARD	
	56265176	1	BRUSH ASSEMBLY 240 GRIT 16	
	56265099	1	BRUSH ASSEMBLY 18	
	56265177	1	BRUSH ASSEMBLY BLUE 18 HARD	
	56265178	1	BRUSH ASSEMBLY 240 GRIT 18	
	56314402	1	WAND ASSEMBLY	
	56265173	1	WAND ASSY. W/SOFT FLOOR TOOL	
	56262209	1	WAND	
	56220109	1	HAND TOOL	
	56380377	1	SPRAY TIP-HAND TOOL	
	56220070	1	UPHOLSTERY HAND TOOL	
	56265174	1	15FT HOSE ASSEMBLY	
	56265112	1	CORD SET 50FT 14/3 SJT	
	56265368	1	HOSE ASSY	
	56265150	1	SQUEEGEE TOOL HARD FLOOR 24	
	56265309	1	PLUG ADAPTOR KIT	
	56265305	1	CARPET WAND 12	



Pos.	Product no	QTY	Description	Notes
00	56314402	1	WAND ASSEMBLY	[1]
05	56314565	1	TOOL HARD FLOOR	
06	56314562	1	BLADE	
07	56314563	1	BRUSH	
08	56314564	1	SPRAY NOZZLE	
09	56314566	1	TOOL SOFT FLOOR	
11	56314572	1	VALVE	
12	56314573	1	FITTING	
13	56314574	1	FITTING-QUICK DISCONNECT	
14	56314575	1	REDUCER	

Part Notes:

[1] - All items on drawing



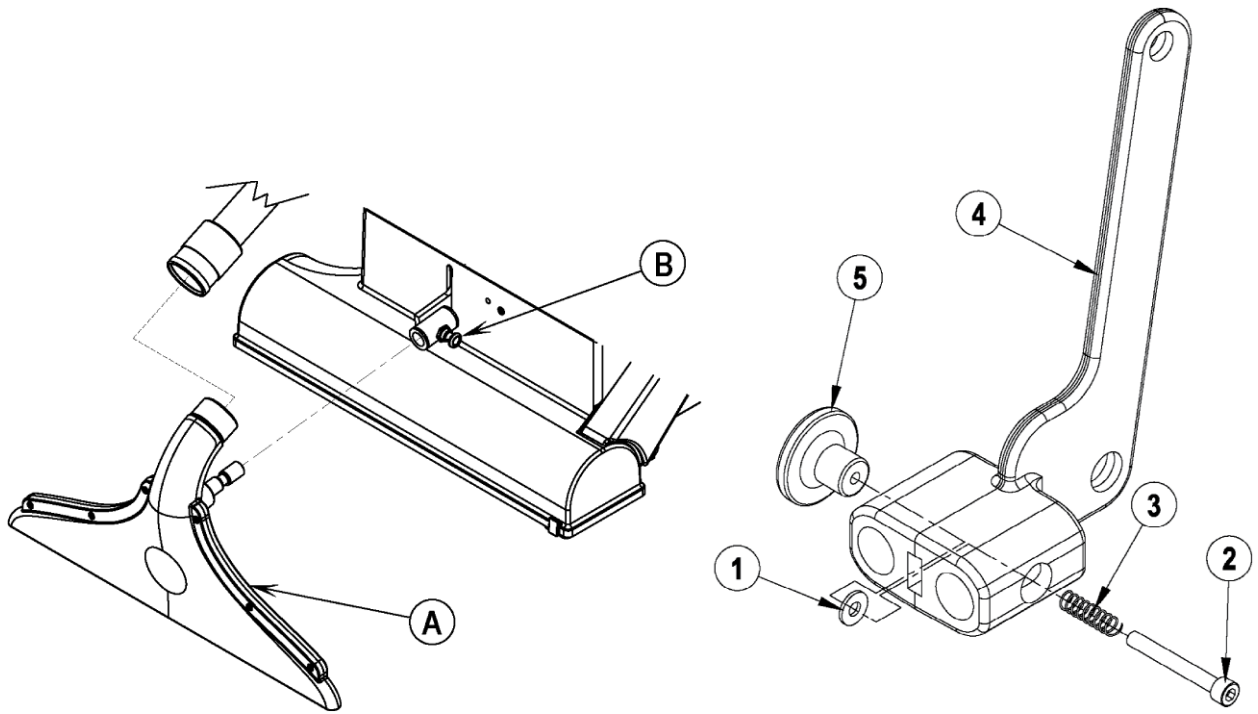
Resource notes:

NOTE 1: These items are used on all models except 56265001.

Pos.	Product no	QTY	Description	Notes
00	56265226	1	KIT PUMP 230V	
01	56264382	1	ADAPTOR BARBED	[1]
02	56265224	1	PUMP 115V	[2]
02	56265223	1	PUMP 230V	[3]
03	56369632	1	ELBOW ST 1/4X90 BR E00031	[1]
04	56109566	1	BARB 90 ELBOW 1/2 X 3/8 NPT	
05	56470138	1	BARB 1/4 X 90 DEG E00037	[1]
06	56264346	2	HOSE .250 X 10.00 E00160	
07	56266134	1	HOSE SPIRAL .50 X 22.00	
08	56507993	1	TEE 3/8 NPT X 1/4 BARBED	[4]

Part Notes:

- [1] - NOTE 1
- [2] - USED IN 56265227
- [3] - USED IN 56265226
- [4] - ONLY USED ON 56265001



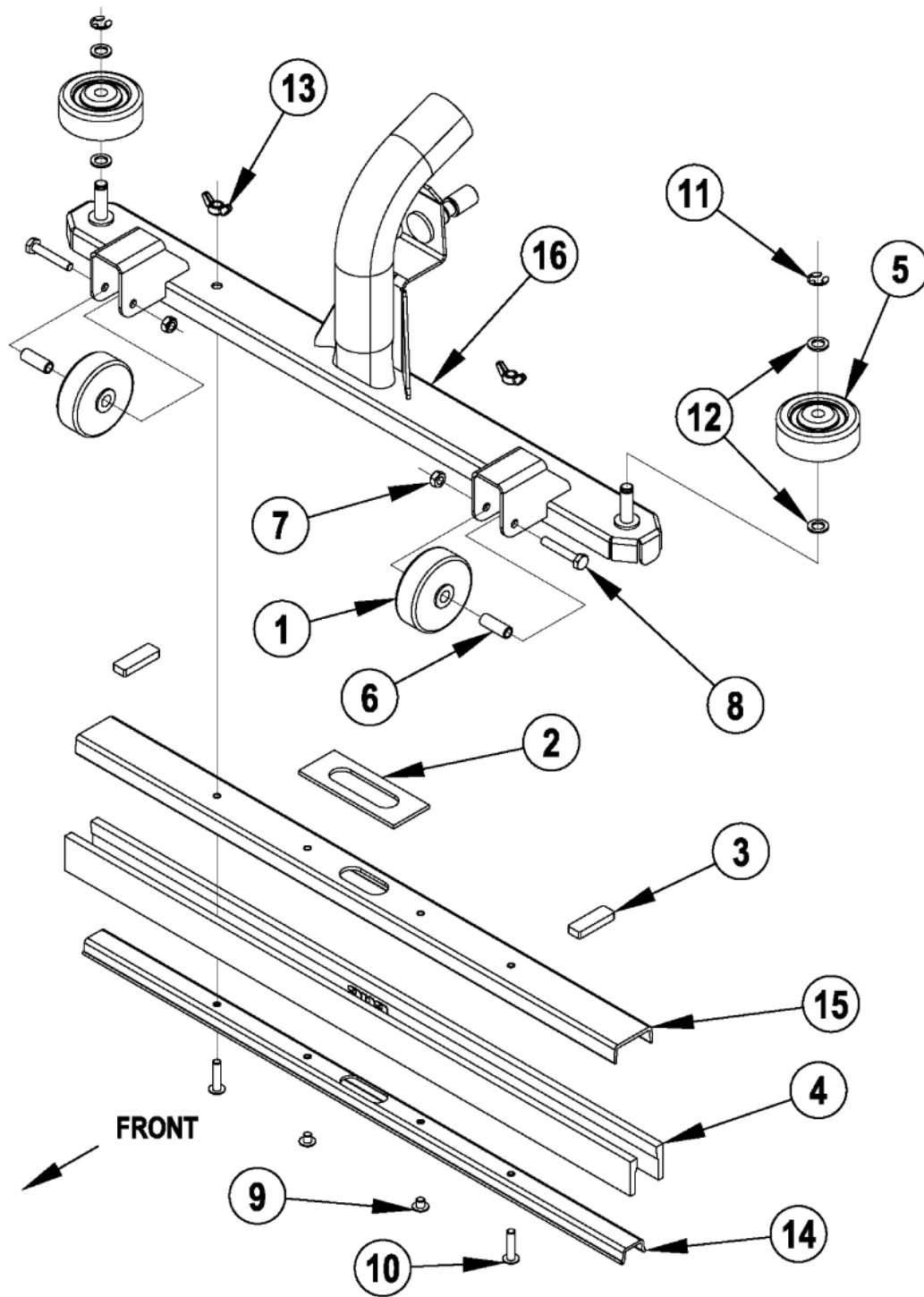
56265243 - Brush Adjustment Lever Kit

AX 410

2017.11.02

2013.04.02

Pos.	Product no	QTY	Description	Notes
00	56265243	1	BRUSH ADJUSTMENT LEVER KIT	
01	56002916	1	WSH FLT SAE SS 10	
02	56003761	1	SCR SOC HD SS 10-32 X 1.50	
03	56201448	1	SPRING COM .25X.750 E00453	
04	56265237	1	LEVER BRUSH ADJUSTMENT	
05	56265239	1	KNOB	



Pos.	Product no	QTY	Description	Notes
	56265150	1	SQUEEGEE TOOL HARD FLOOR 24	
01	56324350	2	WHEEL	
02	56400613	1	GASKET .12X1.50X4.0	
03	56400614	2	GASKET .25X.50X1.50	
04	56105506	2	SQUEEGEE BLADE FOR 24 HARD F	
05	56363855	2	WHEEL 2.50X.812 CA215W	
06	56471220	2	BUSHING .25X.37X1.0RE185L	
07	56002850	2	NUT HEX NYL LOC-THIN SS 1/4-20	
08	56002901	2	SCR HEX SS 1/4-20 X 1.50	
09	56003037	2	SCR PAN PHIL SS 1/4-20 X .25	
10	56003067	2	SCR. PAN PHIL. SS 1/4-20-1.00	
11	56003269	2	RING RET EXT TYPE E REINF	
12	56009047	4	WSH FLT .391X.625X.060	
13	56009048	2	NUT WING LOC 1/4-20	
14	56264336	1	RETAINER	
15	56264337	1	CHANNEL	
16	56265079	1	SQUEEGEE WELDMENT	

