

# PARTS LIST

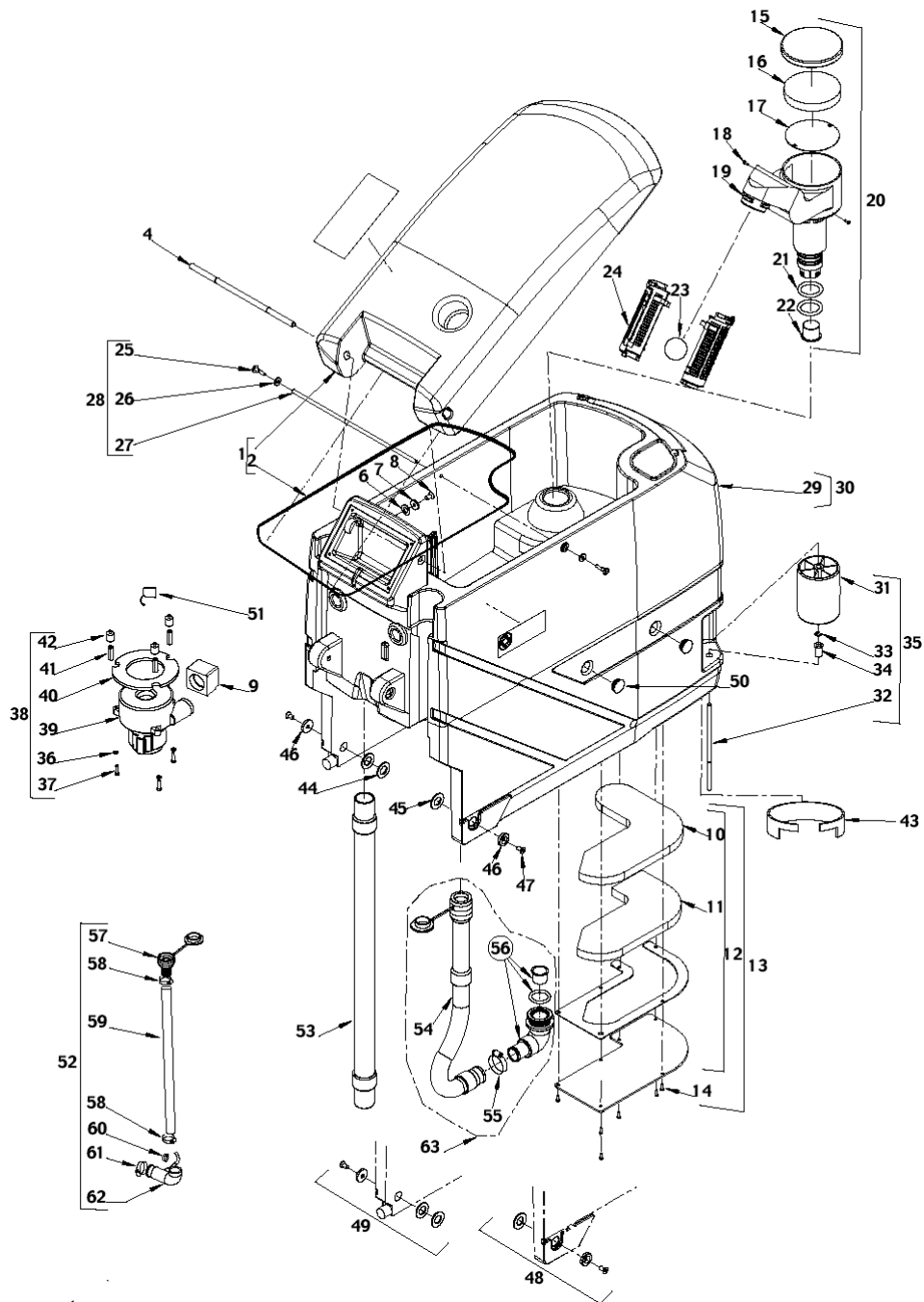


2022.02.17

# TABLE OF CONTENTS

---

Tank Assembly. BA 450/530-BA 530 Inox-BA 610 .....	1
Chassis system. BA 450/530-BA 530 Inox-BA 610 .....	4
Pedal lifting. BA 450/530-BA 530 Inox-BA 610 .....	6
Brush drive system. BA 530 Inox .....	8
Brush drive system. BA 610 .....	10
Brush drive system. BA 610 - 2 motor .....	12
Pad holder assemblies. BA 450/530-BA 530 Inox-BA 610 .....	14
Squeegee system. BA 450/530-BA 530 Inox .....	16
Squeegee system. BA 610 .....	19
Switch housing. BA 450/530-BA 530 Inox-BA 610 .....	21
Switch housing. BA 450/530 without traction .....	23
Control panel assembly. BA 450/530-BA 530 Inox-BA 610 .....	25
Solution system. BA 450/530-BA 530 Inox-BA 610 .....	27
Wiring system w/o traction and w/o charger. BA 450/530 .....	29
Wiring system with traction but w/o b.charger. BA 450/530-BA 530 Inox .....	31
Wiring diagram w/o traction, but with charger. BA 450/530 .....	33
Wiring diagram with traction and with b. charger .....	35
Wiring diagram with traction, but w/o b. charger. BA 610 .....	37
Wiring diagram with traction and with b. charger. BA 610 .....	39
Chassis system without drive motor. BA 450/530-BA 530 Inox-BA 610 .....	41
Brush drive system. BA 530 .....	43
Brush drive system. BA 450 .....	45
Wiring system w/o traction and w/o b. charger. BA 450/530 .....	47
Wiring system with traction, but w/o b. charger. BA 450/530-BA 530 Inox .....	49
Wiring system w/o traction, but w b. charger. BA 450/530 .....	51
Wiring system with traction and with b. charger. BA 450/530-BA 530 Inox .....	53
Wiring system w/o b. charger. BA 610 .....	55
Wiring system with b. charger. BA 610 .....	57



Resource notes:

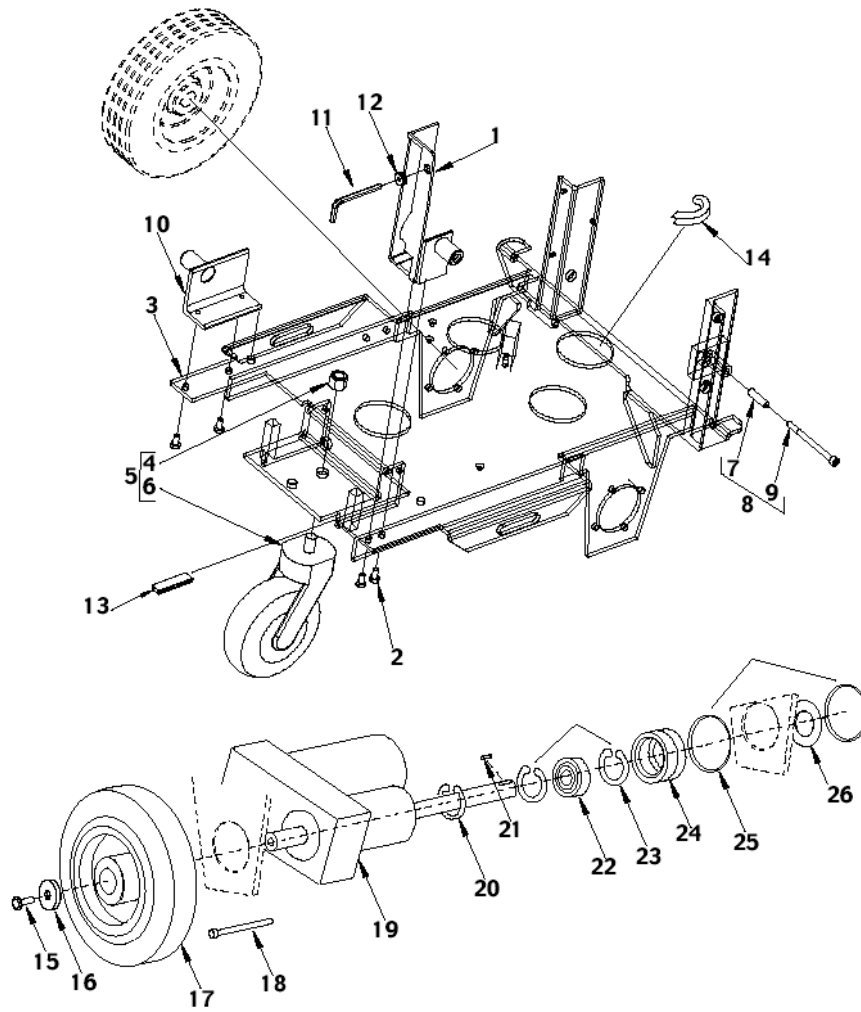
Note: (a) for old Fise vacuum motor 08602437 (b) for new Ametek vacuum motor 909 5021 000 ref. TSB IT 2003-005 TSB IT 2003 005. New Ametek vacuum units Position 0:L08603886 not shown

Pos.	Product no	QTY	Description	Notes
00	L08603886	1	CONNECTOR	[1]
1	L08812712	1	COVER PLAST. GREY F TANK KIT	[1]
2	L08812454	1	GASKET BULB RUBBER L.2130MM SIP	
4	L08812262	1	AXLE,TANK LID	[1]
6	L08812317	2	GASKET	[1]
7	L08812336	2	Gasket	[1]
8	L08812344	2	SCREW M10X50 HEX HD P/THD SS ISO4014	[1]
9	L08812318	1	SLEEVE	[1]
10	L08812340	1	FOAM ACOUSTIC UPPER	[1]
11	L08812443	1	PANEL INSULATION	[1]
12	L08603650	1	PANEL INSULATING	[1]
13	L08812453	1	Cover w/seal, cpl.	[1]
14	L08812804	6	SCREW 3.9X12 PHIL W/O BIT THD FORM F PLA	[1]
15	L08812582	1	COVER PREFILTER PLAST.	[1]
16	L08602016	1	FILTER	[2]
17	L08602017	1	GRID FILTER	[1]
18	L08603123	2	SCREW 3.5X10 PAN PHIL W/O BIT SS F PLAST	[3]
19	L08812256	1	HOUSING.FILTER	[1]
20	L08812475	1	PRE-FILTER KIT CPL	[1]
21	L08812260	2	O ring	[1]
22	L08812351	1	BUSHING FLANGED PLASTIC FILTER-VAC MOTOR	
23	9100000817	1	BALL FLOATING SIP	
24	9100000818	1	CAGE FLOAT HALF 2 PCS SET	
25	L08812687	2	SCREW M6X16 SPECIAL SLOTTED HD NYLON	[3]
26	L08812686	2	SPACER 7X18X3 BLACK	[2]
27	L08812688	1	PIN.TANK ADJUSTER	[1]
28	L08812715	1	TIE-ROD F TANK ADJUST. KIT	[1]
29	L08812711	1	TANK WATER PLAST. GREY	[1]
30	L08812875	1	TANK WATER PLAST. GREY KIT	[1]
31	L08812248	2	BUMPER ROLLER PLAST. F TANK	[3]
32	L08812312	2	Axle	[1]
33	L08211800	2	Circlip C51 wheel assy	[1]
34	L08812347	2	Sleeve	[1]
35	L08812477	2	ROLLER BUMPER ASSY	[1]
36	33023208	3	WASHER PLAIN M8 ISO7089 10 PCS SET	
37	L08232600	3	SCREW M6X25 HEX HD ISO4017 SCOTCH-GRIP	[3]
38	L08812478	1	MOTOR VACUUM KIT	[2]
39	L08603888	1	MOTOR VACUUM KIT	
40	L08602410	1	SEAL.VACUUM MOTOR	
41	L08812468	3	SPACER GALV. F SHOCK ABSORBER	[2]
42	L08812462	3	VIBRATION DAMPING M6	[2]
43	909 5042 000	1	INSULATION ACOUSTIC	[1]
44	L08812439	2	Plastic Washer	[1]
45	L08812357	1	Washer	[1]
46	9100002136	1	WASHER COUNTERSUNK 9X30 H.6 - 2 PCS SET	
47	L08812446	2	Screw flat head	[1]
48	L08812473	1	Tank support, right, cpl.	[1]
49	L08812474	1	Tank support, left, cpl.	[1]
50	33023302	4	PLUG FINNED D.32 PLASTIC BLACK SIP	
51	L08812887	2	Carbon brush	[1]
51	909 5074 000	1	CARBON BRUSH 2 PCS SET	
52	909 5527 000	1	HOSE SOLUTION KIT BA/CA 430-510S	
53	909 5583 000	1	HOSE SUCTION SQUEEGEE GREY L.825MM	
54	9099692000	1	HOSE DRAIN BLACK L.611MM SIP	
55	9100001348	1	CLAMP HOSE 32-52/12 10 PCS SET	
56	L08812874	1	ELBOW PLASTIC GREY F DRAIN HOSE KIT	[4]
57	909 5236 000	1	CLOSURE FRESH WATER HOSE	
58	L08603916	2	CLAMP 12/ 16-27	
59	909 5527 000	1	HOSE SOLUTION KIT BA/CA 430-510S	[5]

Pos.	Product no	QTY	Description	Notes
60	L08603901	1	CLAMP 14.8X15.9	[1]
61	L08236100	1	CLAMP HOSE 20-32/12 DIN3017	
62	L08603870	1	ELBOW.CLEAN WATER HOSE	
63	L08812873	1	HOSE DRAIN L.630MM GREY KIT	

Part Notes:

- [1] - GUARANTEE DATE EXPIRED
- [2] - STOCK COVERS GUARANTEE
- [3] - NO LONGER AVAILABLE
- [4] - ALTERNATIVE HOSE L08812873 COMPL
- [5] - alternative hose complete item 909 5527 000



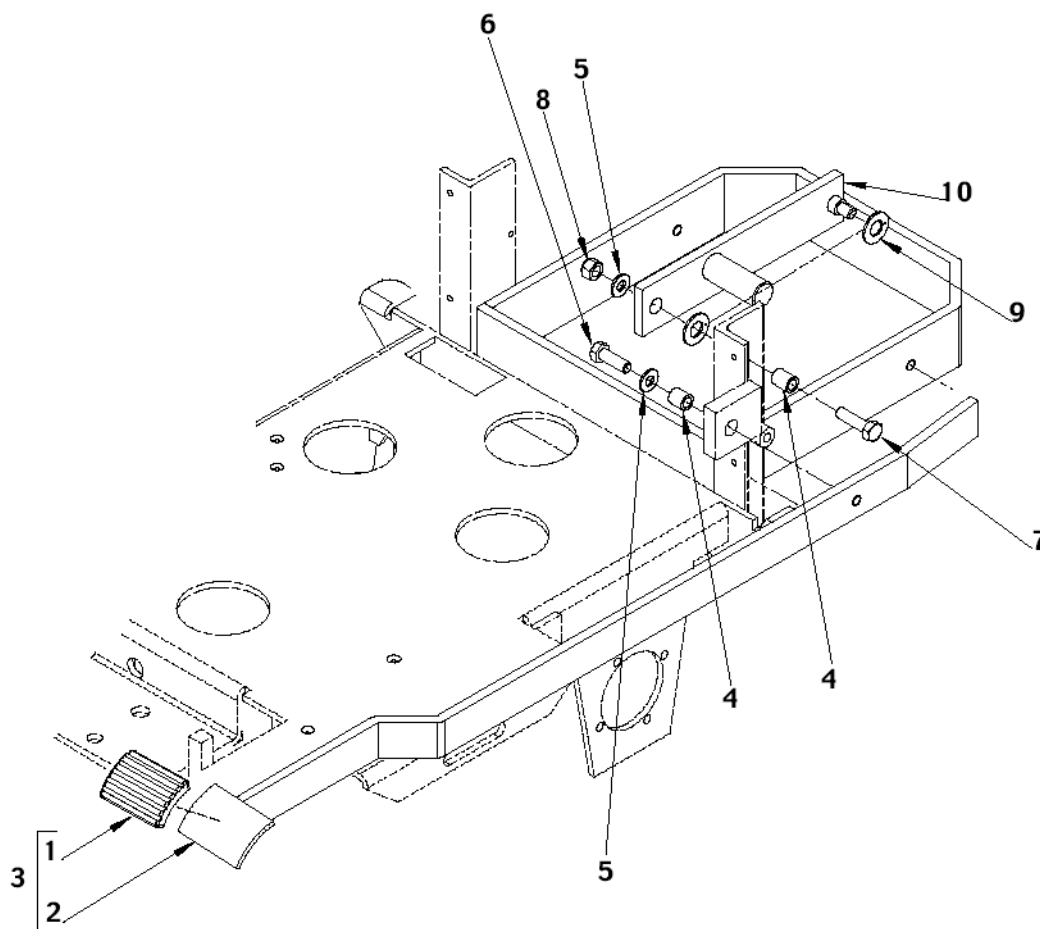
Resource notes:

Note: POSITION 6 NO MORE AVAILABLE AS SINGLE SEE TSB IT 2005-019TSB IT 2005-019. New castor wheel  
Pos No.0 means "Not shown"

Pos.	Product no	QTY	Description	Notes
00	1464432000	2	CARBON BRUSH 4 PCS SET	
01	909 5051 000	1	AXLE RIGHT,TANK SS	[1]
01	L08812252	1	BRACKET RT F TANK	[1]
02	L08326100	4	SCREW M6X12 HEX HD ISO4017 SCOTCH-GRIP	[2]
03	909 5267 000	1	FRAME	[1]
03	909 5415 000	1	CHASSIS SS	[1]
04	L08601000	1	NUT LOCK HEX M12 ISO7040	[2]
05	909 6000 000	1	WHEEL CASTOR D.125X32 GALV. KIT	[3]
07	L08812449	1	SPACER D.6X8 H.29 BRASS	[1]
08	L08812461	1	CLOSURE TANK KIT	[1]
09	33004151	1	SCREW M6X80 UNI5931	[1]
10	909 5050 000	1	AXLE LEFT TANK	[1]
10	L08812246	1	Tank axle, cpl.	[1]
11	L08063800	1	ALLEN WRENCH 5 MM	[4]
12	L08812388	1	GROMMET	[1]
13	146 1623 000	1	GASKET	[1]
14	146 1966 000	1	GASKET RUBBER L. 100MM SIP	[4]
15	L08602341	2	Hexagonal screw M10x25 pa	[1]
16	L08604251	2	WASHER PLAIN M10X30X2.5 ISO7093	
17	909 5078 000	2	WHEEL FRONT D.200 DRIVE	[5]
17	L08603697	2	WHEEL.DRIVE	[6]
18	L08326100	4	SCREW M6X12 HEX HD ISO4017 SCOTCH-GRIP	[2]
19	L08812234	1	MOTOR DRIVE 200W 24V	[1]
20	L08182700	2	RING D 22 SP.1.75 UNI7436	[7]
21	145 9776 000	2	KEY 6X6X35 UNI6604A	
22	L08183900	1	BEARING BALL 6204 2RS1	
23	33006176	2	RING D 47 UNI7437	[2]
24	L08812237	1	HOLDER BALL BEARING	[1]
25	33006096	2	RING D 60 UNI7435	[4]
26	L08812338	1	SPRING WAVY D.61	[1]

## Part Notes:

- [1] - GUARANTEE DATE EXPIRED
- [2] - STOCK COVERS GUARANTEE
- [3] - SEE TSB IT 2007-019
- [4] - NO LONGER AVAILABLE
- [5] - POLYURETHANE BROWN - OPTION  
STOCK COVERS GUARANTEE
- [6] - SLICK GREY - STD  
STOCK COVERS GUARANTEE
- [7] - NO MORE AVAILABLE



Resource notes:

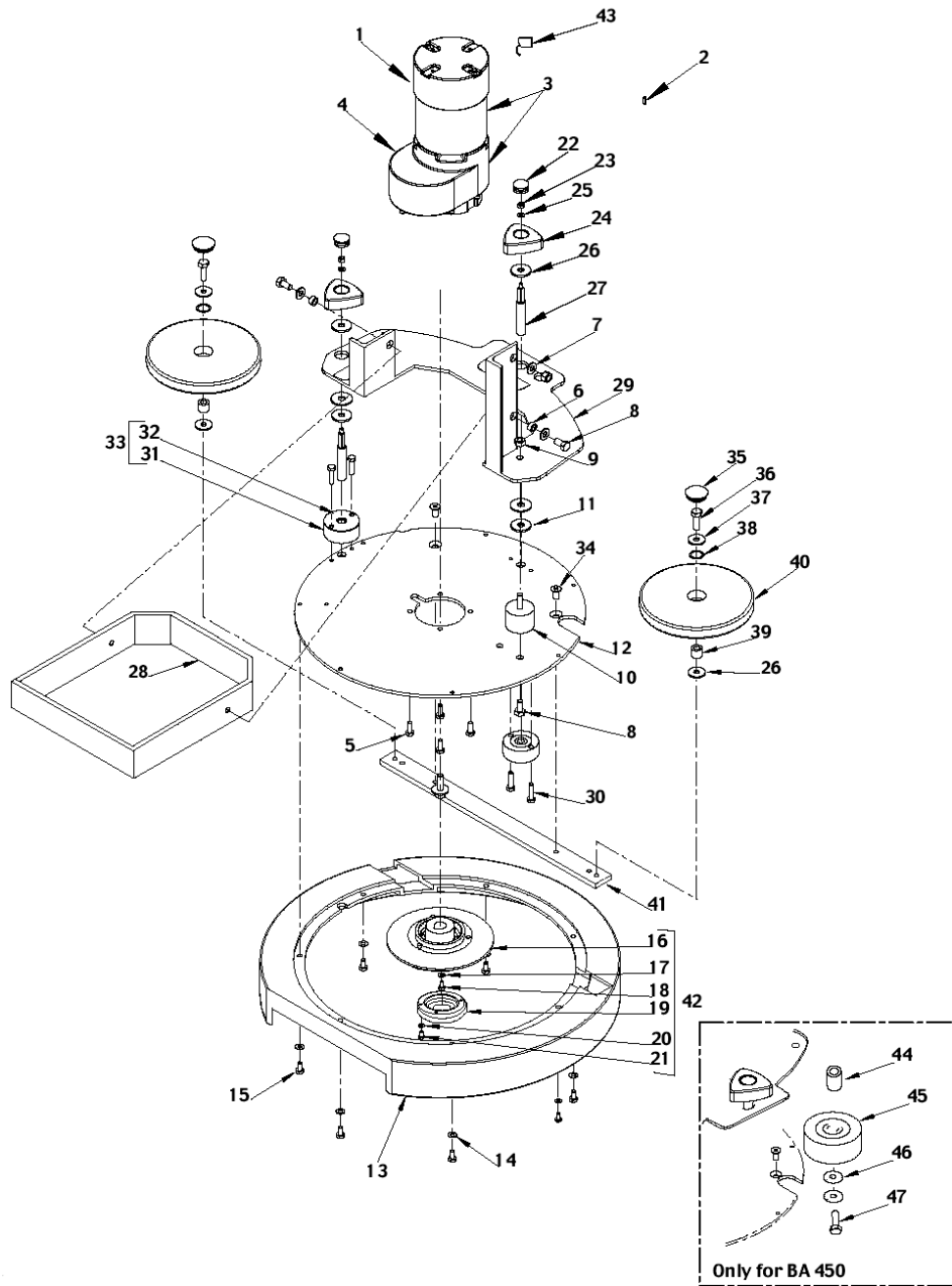
Note:

---

Pos.	Product no	QTY	Description	Notes
01	L08812226	1	COVER.PEDAL	[1]
02	909 5046 000	1	PEDAL BRUSH LIFTING SS	[2]
02	L08812223	1	PEDAL.BRUSH LIFTING	[1]
03	L08812467	1	PEDAL LIFTING ASSY	[2]
04	L08812324	2	SPACER D.8X12 H.12.5 BRASS	[2]
05	33023208	6	WASHER PLAIN M8 ISO7089 10 PCS SET	
06	L08367300	1	SCREW M8X25 HEX HD ISO4017 SCOTCH-GRIP	[2]
07	33003996	1	SCREW M8X30 HEX HD F/THD ISO4017	
08	33023574	1	NUT LOCK HEX M8 ISO10511 PCS 10 SET	
09	L08812361	2	WASHER THRUST DU D.12X24X1.5 MM	[2]
10	L08812219	1	LEVER.BRUSH LIFTING	[2]
10	909 5048 000	1	LEVER BRUSH LIFTING SS	[2]

## Part Notes:

- [1] - NO LONGER AVAILABLE
- [2] - GUARANTEE DATE EXPIRED



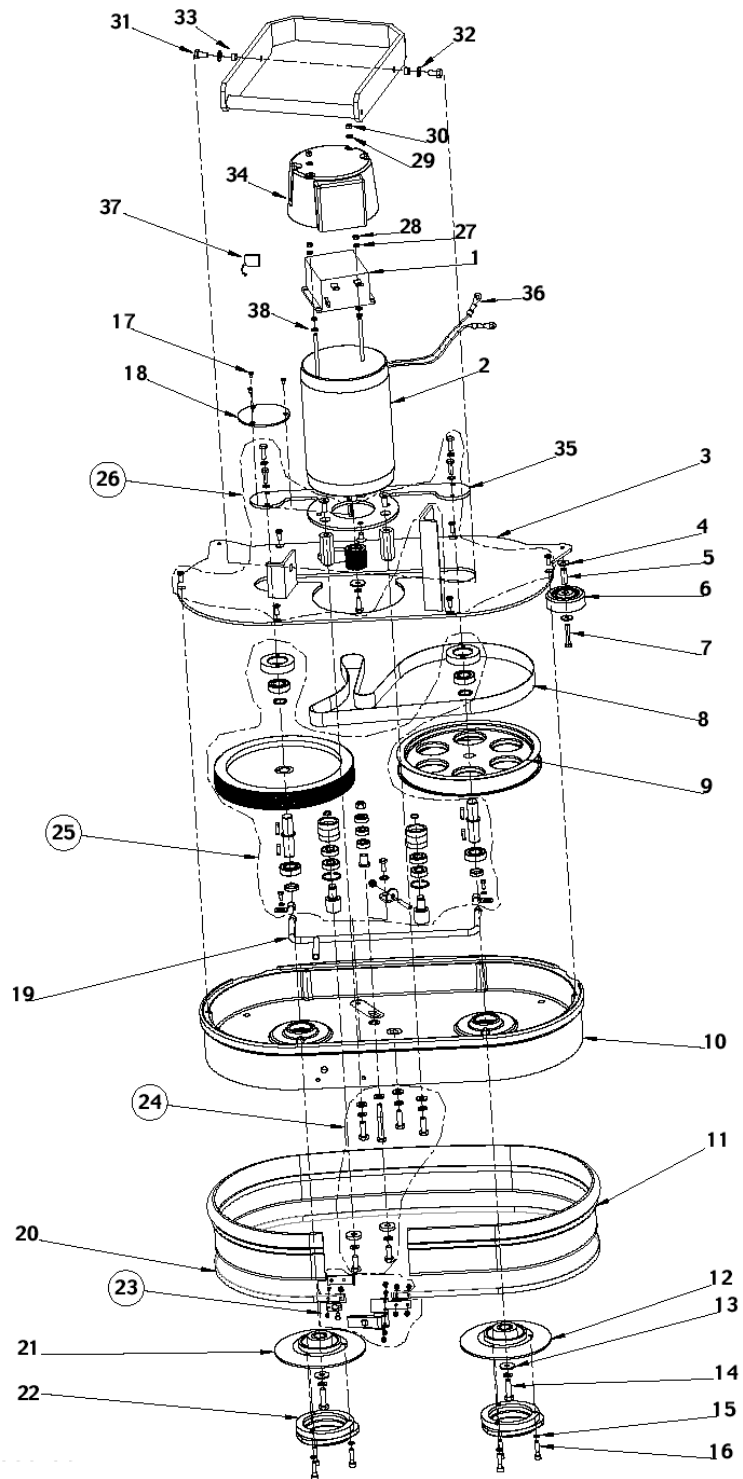
Resource notes:

Note:

Pos.	Product no	QTY	Description	Notes
00	909 5175 000	1	SPLASH GUARD KIT	[1]
1	9097114000	1	MOTOR ELECTRIC 520W 24V	
2	1466147000	1	KEY 5X5X20 UNI6604A SIP	
3	909 5507 000	1	REDUCTION GEAR MOTOR 520W 24V	
4	9099851000	1	REDUCTION GEAR	
5	L08600757	4	SCREW M6X16 HEX HD ISO4017 SCOTCH-GRIP	[1]
6	L08812325	4	SPACER 8.1X12X6.5 BRASS	
7	33023208	4	WASHER PLAIN M8 ISO7089 10 PCS SET	
8	L08274300	5	SCREW M8X16 HEX HD ISO4017 SCOTCH-GRIP	[2]
9	33005504	1	NUT HEX M8 MEDIUM ISO4032	
10	9100000868	1	VIBRATION DAMPING M8 60SH 2 PCS SET	
11	L08812719	1	WASHER PLAIN D.9.5X27X2.5 GALV.	[3]
12	L08812205	1	Base plate	[1]
12	909 5044 000	1	PLATE BRUSH HOLDER SS	[4]
14	1466530000	7	WASHER PLAIN M6X18 ISO7093 10 PCS SET	
15	L08326100	7	SCREW M6X12 HEX HD ISO4017 SCOTCH-GRIP	[3]
16	L08812306	1	HUB METAL F BRUSH	
17	145 9171 000	1	WASHER PLAIN M8X32X2.5 GALV UNI6593	
18	33003996	1	SCREW M8X30 HEX HD F/THD ISO4017	
19	L08812480	1	HUB PLAST. F BRUSH	
20	L08353300	3	WASHER SELF BLOCK DISK M6 DIN25201	[2]
21	909 5056 000	3	SCREW M6X20 CAP HD HEX SS ISO4762 SCOTCH	[1]
22	L08812426	2	PLUG FINNED D.22 PLASTIC BLACK	
23	33023655	2	NUT HEX M5 MEDIUM ISO4032 10PCS.SET	[3]
24	L08812203	2	KNOB	
25	L08812719	4	WASHER PLAIN D.9.5X27X2.5 GALV.	[3]
26	L08812718	2	WASHER PLAIN D.10X30X2 RUBBER	[2]
27	909 5091 000	2	PIN BRUSH PLATE FIXING SS	[5]
27	L08812706	2	PIN PLATE FIXING	
28	L08812218	1	Frame	[1]
29	L08812221	1	PLATE.BRUSH HOLDER	[1]
29	909 5047 000	1	PLATE SS BRUSH HOLDER	[4]
30	L08812885	2	SCREW M6X30 HEX HD ISO4017 SCOTCH-GRIP	[2]
31	909 5411 000	2	SUPPORT VIBRATION DAMPING SS	[1]
31	L08812213	2	BUFFER F BRUSH HOLDER PLATE	
32	L08812779	2	PLATE.VIBRATION DAMPING	
33	L08812780	1	PLATE FIXING BRUSH KIT	
42	L08812589	1	HUB BRUSH KIT	
43	L08603850	1	CARBON BRUSHES KIT 4 PCS	[3]

## Part Notes:

- [1] - GUARANTEE DATE EXPIRED
- [2] - NO LONGER AVAILABLE
- [3] - STOCK COVERS GUARANTEE
- [4] - Machine pruned 09.2006  
GUARANTEE DATE EXPIRED
- [5] - Machine pruned 09.2006  
ALTERNATIVE L08812706 NON STAINLESSSTEEL



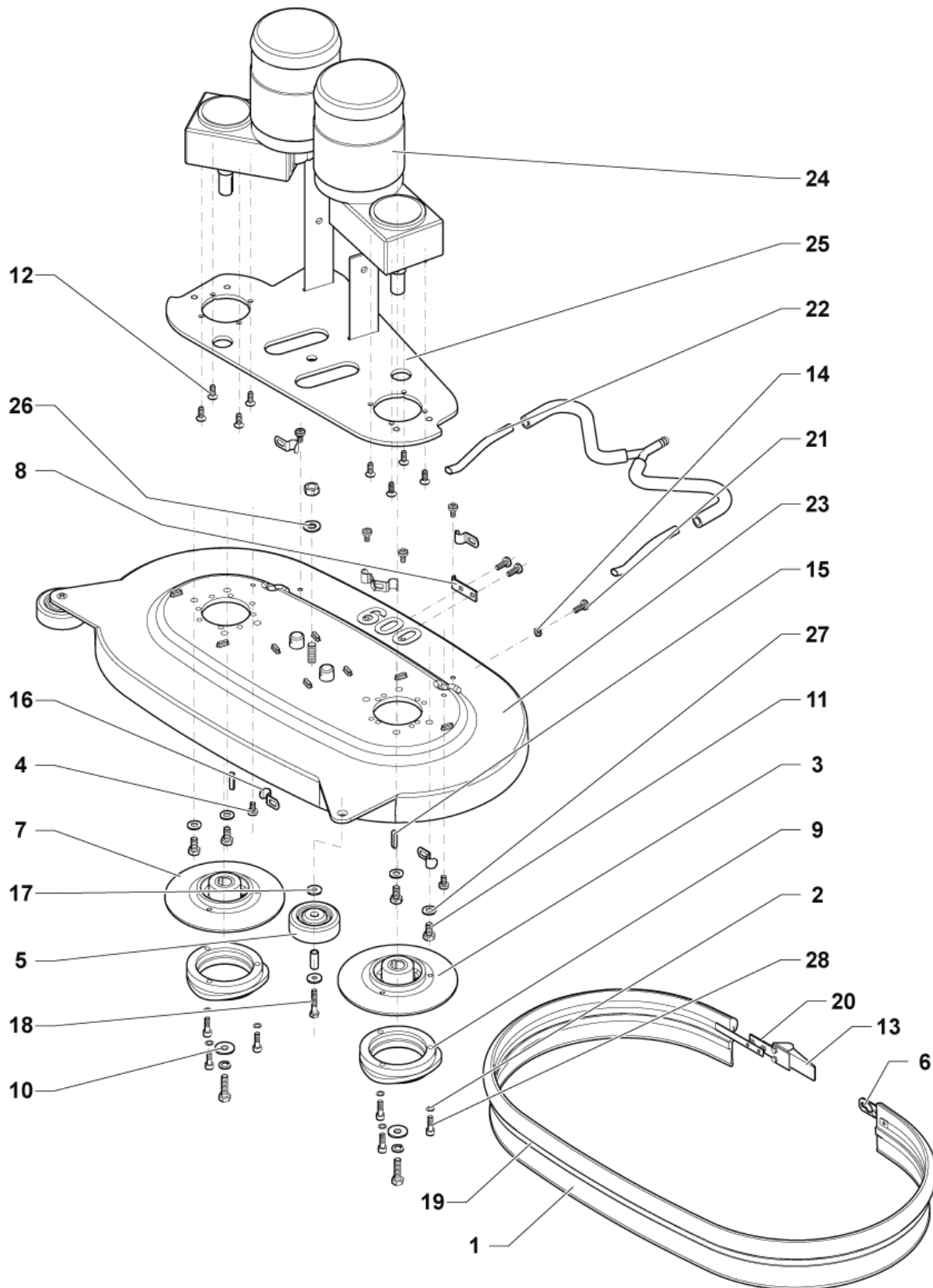
Resource notes:

Note: Pos No.0 means "Not shown"

Pos.	Product no	QTY	Description	Notes
00		1		
01	909 5016 000	1	Electronic card	[1]
02	L08603820	1	Electric motor W 650 24V	[2]
03	L08603810	1	COVER.BRUSH DECK	[1]
04	1466530000	4	WASHER PLAIN M6X18 ISO7093 10 PCS SET	
05	L08602461	2	SPACER D.6.8X9 H.26 GALV.	[1]
06	L08602460	2	ROLLER BUMPER PLAST.	
07	33023227	2	SCREW M6X35 HEX HD ISO4017 10 PCS SET	[1]
08	L08603821	1	BELT TIMING SYNCROFLEX 25T5/1315	[1]
09	L08603811	1	PULLEY	[1]
10	909 5546 000	1	DECK BRUSH 610MM/24 KIT	[3]
11	L08603837	1	GUARD SPLASH	[1]
12	L08812306	1	HUB METAL F BRUSH	
13	33023660	2	WASHER PLAIN M8X24X2 ISO7093 5 PCS SET	
14	33003996	2	SCREW M8X30 HEX HD F/THD ISO4017	
15	L08353300	6	WASHER SELF BLOCK DISK M6 DIN25201	[4]
16	909 5056 000	6	SCREW M6X20 CAP HD HEX SS ISO4762 SCOTCH	[1]
17	L08603976	3	SCREW M3X8 C/SUNK FLAT PHIL SS ISO7046	[1]
18	L08603904	1	CLOSURE	[5]
19	L08603815	1	PIPE COPPER F WATER BRUSH	[4]
20	L08603826	1	HOLDER SPLASH GUARD	[6]
21	L08812306	1	HUB METAL F BRUSH	
22	L08812480	2	HUB PLAST. F BRUSH	
23	L08603979	1	GUARD SPLASH FIXING KIT	[1]
24	L08603980	1	HARDWARE BRUSH DECK KIT	[1]
25	L08603981	1	PULLEYS FIXING KIT	[1]
26	L08603982	1	HARDWARE BRUSH MOTOR KIT	[1]
27	33005502	2	NUT HEX M6 MEDIUM ISO4032	
28	33023655	2	NUT HEX M5 MEDIUM ISO4032 10PCS.SET	[7]
29	33023195	6	WASHER PLAIN M5 ISO7089 10 PCS SET	
30	33023194	2	NUT LOCK HEX M5 LOW ISO10511 10 PCS SET	
31	L08274300	2	SCREW M8X16 HEX HD ISO4017 SCOTCH-GRIP	[4]
32	33023208	2	WASHER PLAIN M8 ISO7089 10 PCS SET	
33	L08812325	2	SPACER 8.1X12X6.5 BRASS	
34	909 5020 000	1	COVER ELECTRONIC CARD	[1]
35	L08603823	1	FLANGE	[1]
36	146 0725 000	2	TERMINAL RING INS.YELL.D.6.4-4/6MMQ	[1]
37	L08603949	1	CARBON BRUSH 4 PCS SET	

## Part Notes:

- [1] - GUARANTEE DATE EXPIRED
- [2] - ITEM NO LONGER AVAILABLE
- [3] - PRUNED ACCESSORY
- [4] - NO LONGER AVAILABLE
- [5] - until 2004  
GUARANTEE DATE EXPIRED
- [6] - GUARANTEE PERIOD EXPIRED
- [7] - STOCK COVERS GUARANTEE

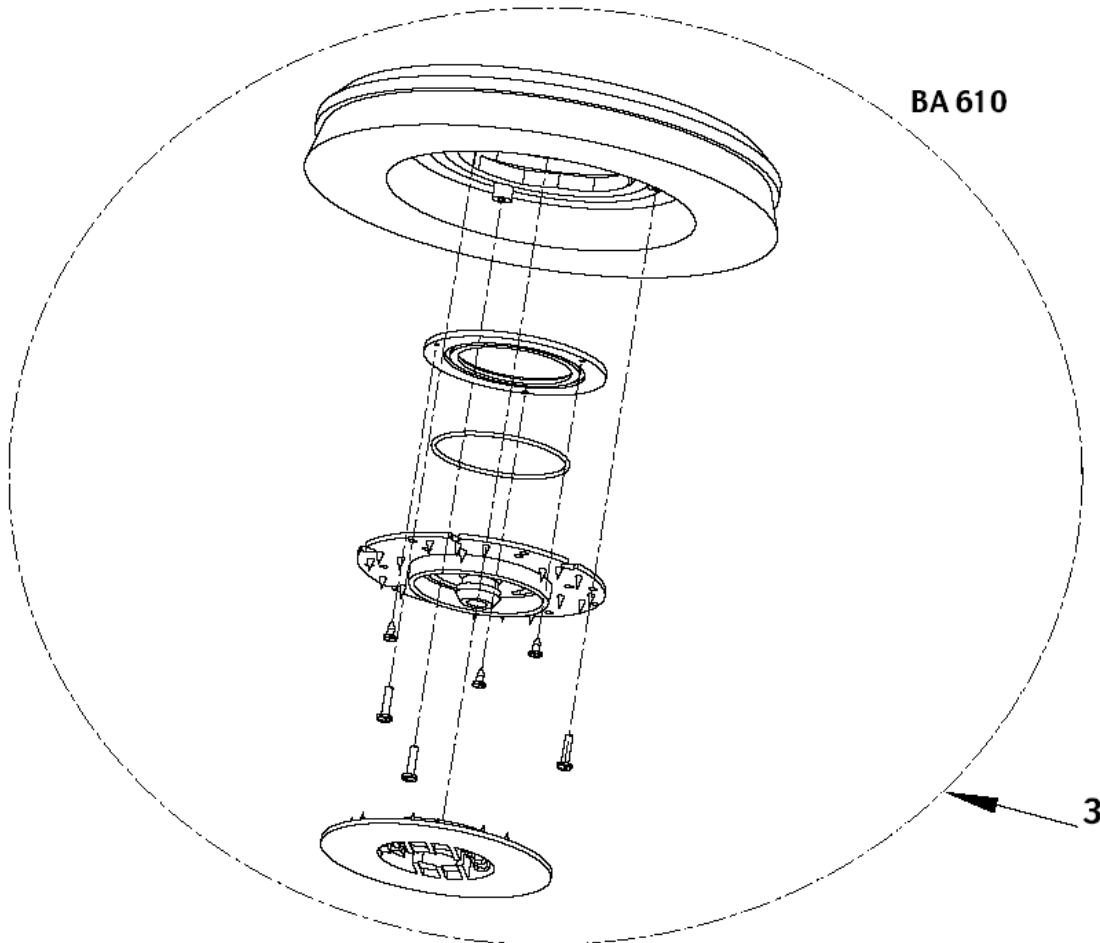
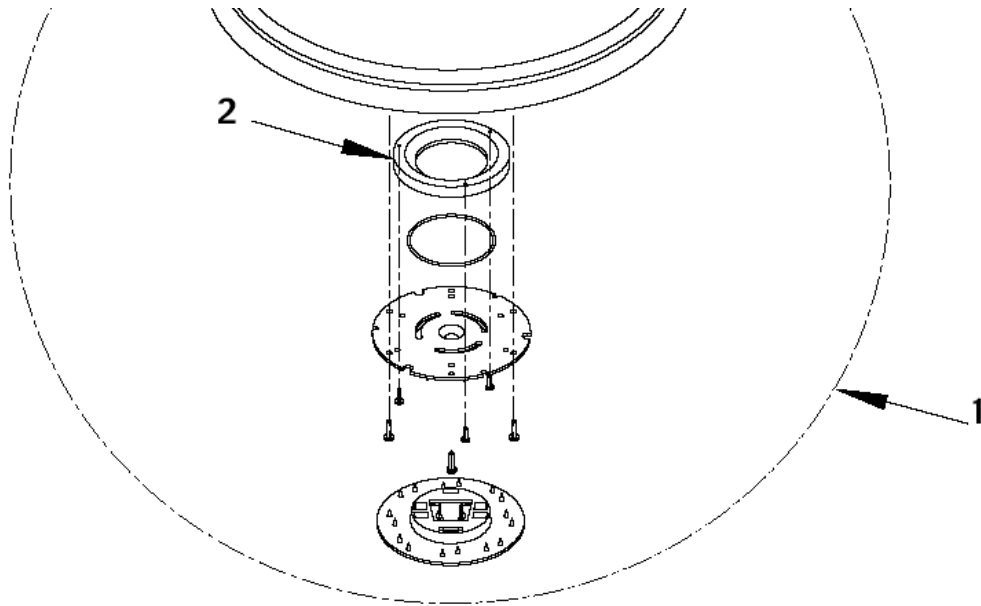


Resource notes:  
29 - NOT SHOWN

Pos.	Product no	QTY	Description	Notes
01	909 5224 000	1	SPLASH GUARD DECK 650MM/26	
02	L08353300	6	WASHER SELF BLOCK DISK M6 DIN25201	[1]
03	L08812306	1	HUB METAL F BRUSH	
04	L08603986	6	SCREW M6X12 UNI7687 SS	[2]
05	L08602460	2	ROLLER BUMPER PLAST.	
06	L08603984	1	PLATE STRAIGHT W/HOLE	[2]
07	L08812306	1	HUB METAL F BRUSH	
08	L08603968	1	PLATE BENT	[3]
09	L08812480	2	HUB PLAST. F BRUSH	
10	1466482000	2	WASHER PLAIN M8X24 SS ISO7093 10 PCS SET	[1]
11	145 0521 000	4	SCREW M8X16 HEX HD F/THD SS ISO4017	
12	33004576	8	SCREW M6X16 C/SUNK FLAT HD HEX ISO10642	
13	9098321000	1	LATCH SQUEEGEE	
22	909 5228 000	2	PIPE COPPER F WATER BRUSH	[2]
14	33023183	1	NUT HEX M6 LOW ISO4035 10 PCS SET	[1]
15	1466146000	2	KEY 5X5X25 UNI6604A SIP	
16	145 9212 000	6	U-BOLT D.10	[2]
17	1466530000	4	WASHER PLAIN M6X18 ISO7093 10 PCS SET	
18	33023227	2	SCREW M6X35 HEX HD ISO4017 10 PCS SET	[2]
19	L08603826	1	HOLDER SPLASH GUARD	[3]
20	L08603967	1	PLATE STRAIGHT	[2]
21	909 5010 000	3	SCREW M6X16 PAN HD PHIL SS ISO7045	[2]
23	909 5344 000	1	DECK BRUSH	
24	909 5542 000	2	REDUCTION GEARMOTOR 350W 24V	[2]
25	909 5539 000	1	SUPPORT REDUCT.GEARMOTOR	[2]
26	33023224	1	WASHER PLAIN M10 ISO7089 10 PCS SET	
27	9100001351	4	WASHER PLAIN M8 ISO7089 SS 10 PCS SET	
28	909 5056 000	6	SCREW M6X20 CAP HD HEX SS ISO4762 SCOTCH	[2]
29	909 5546 000	1	DECK BRUSH 610MM/24 KIT	[4]

## Part Notes:

- [1] - NO LONGER AVAILABLE
- [2] - GUARANTEE DATE EXPIRED
- [3] - GUARANTEE PERIOD EXPIRED
- [4] - INST. INSTR. 909 5540 000  
PRUNED ACCESSORY

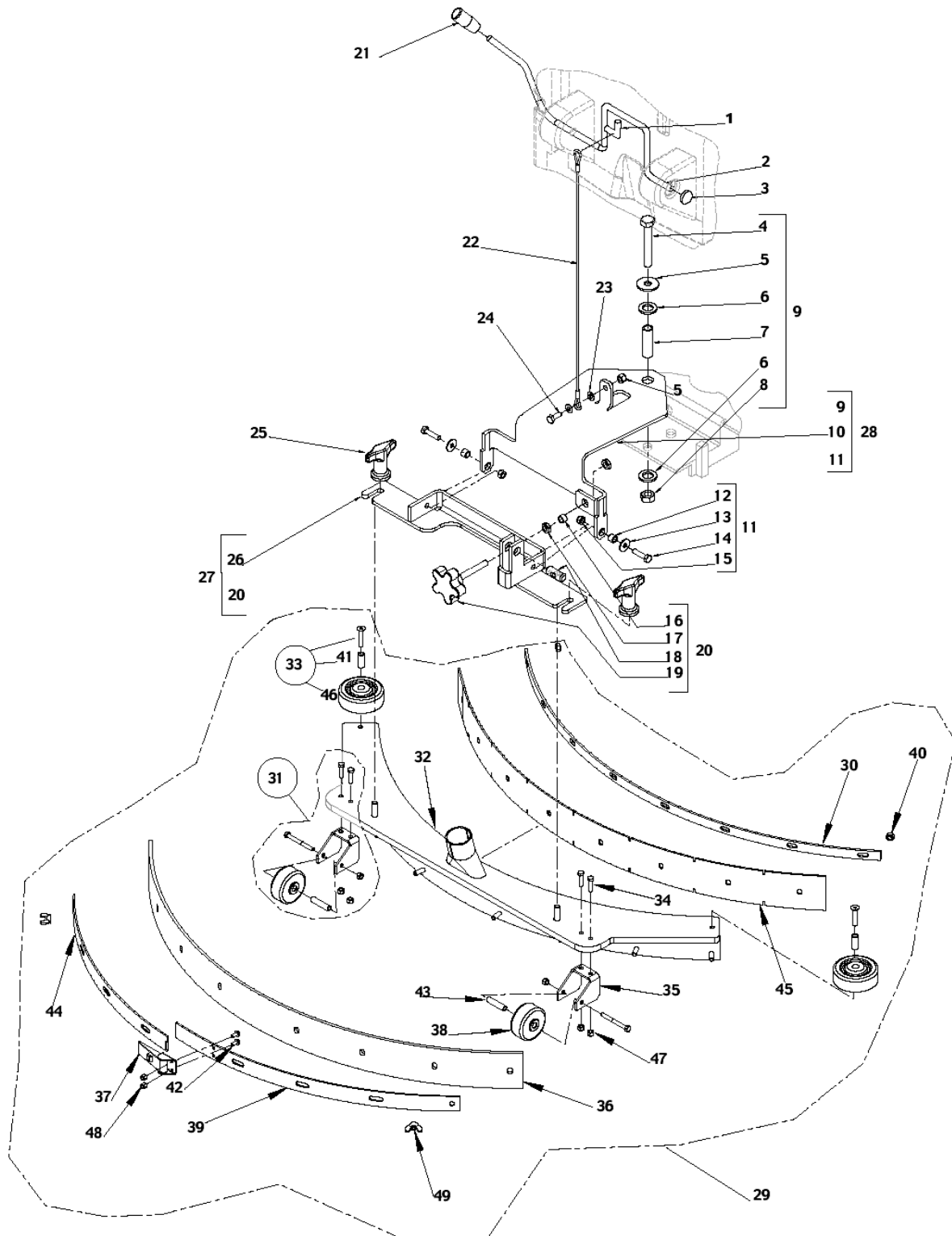


Resource notes:

Note:

---

<b>Pos.</b>	<b>Product no</b>	<b>QTY</b>	<b>Description</b>	<b>Notes</b>
01	L08837017	1	PAD HOLDER BRISTLE 17 430MM CPL	
01	L08837018	1	PAD HOLDER BRISTLE 20 510MM CPL	
02	L08603966	1	RING NYLON	
03	9099670000	1	PAD HOLDER FLAT 12 305MM	



Resource notes:

Note: Pos No.0 means "Not shown"

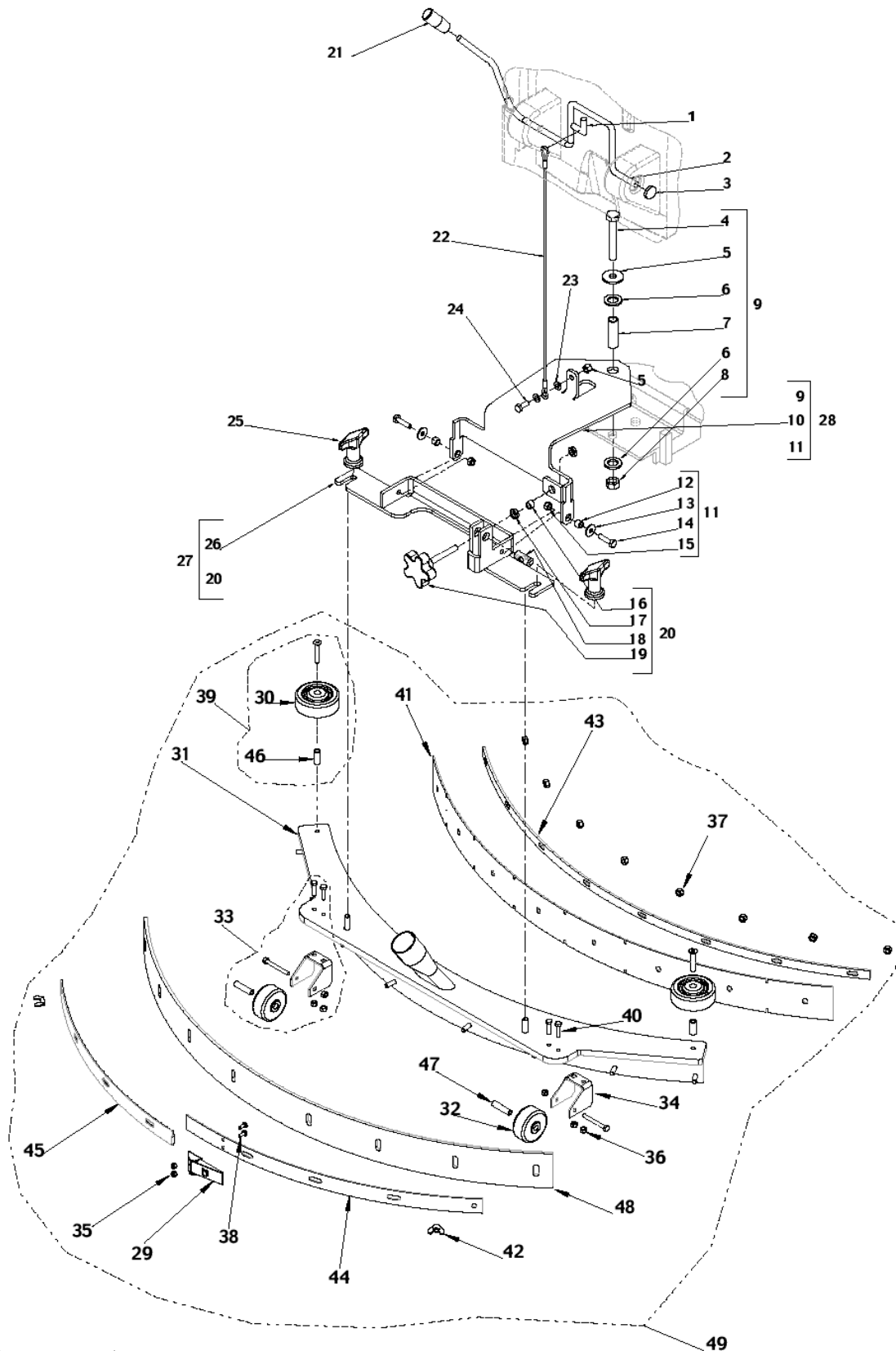
Pos.	Product no	QTY	Description	Notes
00	L08603923	1	ROLLER BUMPER OPTION KIT	[1]
00	L08603935	1	CAP BLACK	[2]
00	L08812404	1	BLADES SQUEEGEE STD W/FILTERS KIT	
02	L08812230	1	LEVER SQUEEGEE LIFTING GALV.	[1]
03	L08812356	1	COVER.PIN D.8	[3]
04	909 5089 000	1	SCREW M10X70 HEX HD F/THD SS ISO4017	[1]
04	33004018	1	SCREW M10X70 HEX HD F/THD ISO4017	[2]
05	L08604251	1	WASHER PLAIN M10X30X2.5 ISO7093	
06	L08238300	2	WASHER PLAIN D.15X25X3 NYLON	
07	909 5085 000	1	SPACER 10.4X14X47 SS	[1]
07	L08812391	1	SPACER D.10.4X14 H.47 GALV.	[1]
08	L08082100	1	BUSH	
09	L08812516	1	FIXTURE KIT	[1]
10	909 5045 000	1	PLATE SS,SQUEEGEE SUPPORT	[1]
10	L08603655	1	PLATE.SQUEEGEE SUPPORT	[1]
11	L08812521	1	HARDWARE SQUEEGEE FIXING KIT	[3]
12	L08601854	2	SPACER 7X10X8	[1]
13	1466530000	2	WASHER PLAIN M6X18 ISO7093 10 PCS SET	
14	L08232600	2	SCREW M6X25 HEX HD ISO4017 SCOTCH-GRIP	[3]
15	33023667	2	NUT LOCK HEX M6 LOW ISO10511 5 PCS SET	
16	L08602422	1	SPACER D.8X10 H.7 SS	
17	33005533	2	NUT HEX M8 LOW ISO4035	
18	L08601509	1	PIN MET. SQUEEGEE SUPPORT	
19	L08601574	1	HANDWHEEL M8X55	
20	L08812518	1	HARDWARE ADJUSTING KIT	
21	L08812349	1	KNOB	
22	L08812362	1	CABLE SQUEEGEE LIFTING L.420MM	
23	1466530000	2	WASHER PLAIN M6X18 ISO7093 10 PCS SET	
24	L08232600	1	SCREW M6X25 HEX HD ISO4017 SCOTCH-GRIP	[3]
25	9097637000	1	SQUEEGEE FIXING KIT	
26	L08812228	1	HOLDER.SQUEEGEE	[1]
27	L08812519	1	HOLDER SQUEEGEE KIT	[1]
28	L08603657	1	ARM LINKAGE KIT	[2]
29	L08603878	1	SQUEEGEE 740MM 29 METAL KIT	
30	L08603672	1	STRAP FRONT METAL F SQUEEGEE 740MM 29	[1]
30	909 5062 000	1	STRAP FRONT SS F SQUEEGEE	[1]
31	L08603879	1	WHEEL SQUEEGEE KIT	
32	L08603676	1	SQUEEGEE 740MM 29 METAL	[1]
32	909 5063 000	1	WELDMENT,SQUEEGEE SS	[1]
33	L08603880	1	ROLLER BUMPER KIT	
34	L08603687	1	Screw hex hd M5x20 SS	[3]
35	909 5059 000	2	BRACKET SQUEEGEE WHEEL SS	[1]
35	L08603666	2	BRACKET.SQUEEGEE WHEEL	[1]
36	909 6860 000	1	BLADES SQUEEGEE 740MM 29 GUM RUBBER KIT	
37	9098321000	1	LATCH SQUEEGEE	
38	9100000559	2	WHEEL D.51 GREY SIP	
39	909 5060 000	1	STRAP REAR RT METAL F SQUEEGEE	[1]
39	L08603670	1	STRAP REAR LT METAL F SQUEEGEE 740MM 29	[1]
40	L08603682	8	NUT LOCK HEX M6 LOW SS ISO10511	
41	L08812397	2	HARNES VAC.MOT/EL.CARD	[4]
41	909 5058 000	2	SPACER D.6.3X9.5 H.21 SS	[1]
42	L08812948	2	SPACER D.5.1X8 H.33.5 BRASS	
43	909 5057 000	2	SPACER D.5.1X8 H.33.5 SS	[3]
44	909 5061 000	1	STRAP REAR LT SS F SQUEEGEE	[1]
44	L08603669	1	STRAP REAR RT METAL F SQUEEGEE 740MM 29	[1]
45	909 6860 000	1	BLADES SQUEEGEE 740MM 29 GUM RUBBER KIT	
46	L08602460	2	ROLLER BUMPER PLAST.	
47	L08603688	6	Hex Nut selflocking SS M5	[3]
48	L08603685	2	NUT LOCK HEX M4 LOW SS ISO10511	

---

Pos.	Product no	QTY	Description	Notes
49	909 6356 000	2	KNOB WING M6 FEMALE 5 PCS SET	

## Part Notes:

- [1] - GUARANTEE DATE EXPIRED
- [2] - STOCK COVERS GUARANTEE
- [3] - NO LONGER AVAILABLE
- [4] - TSB 2004-015



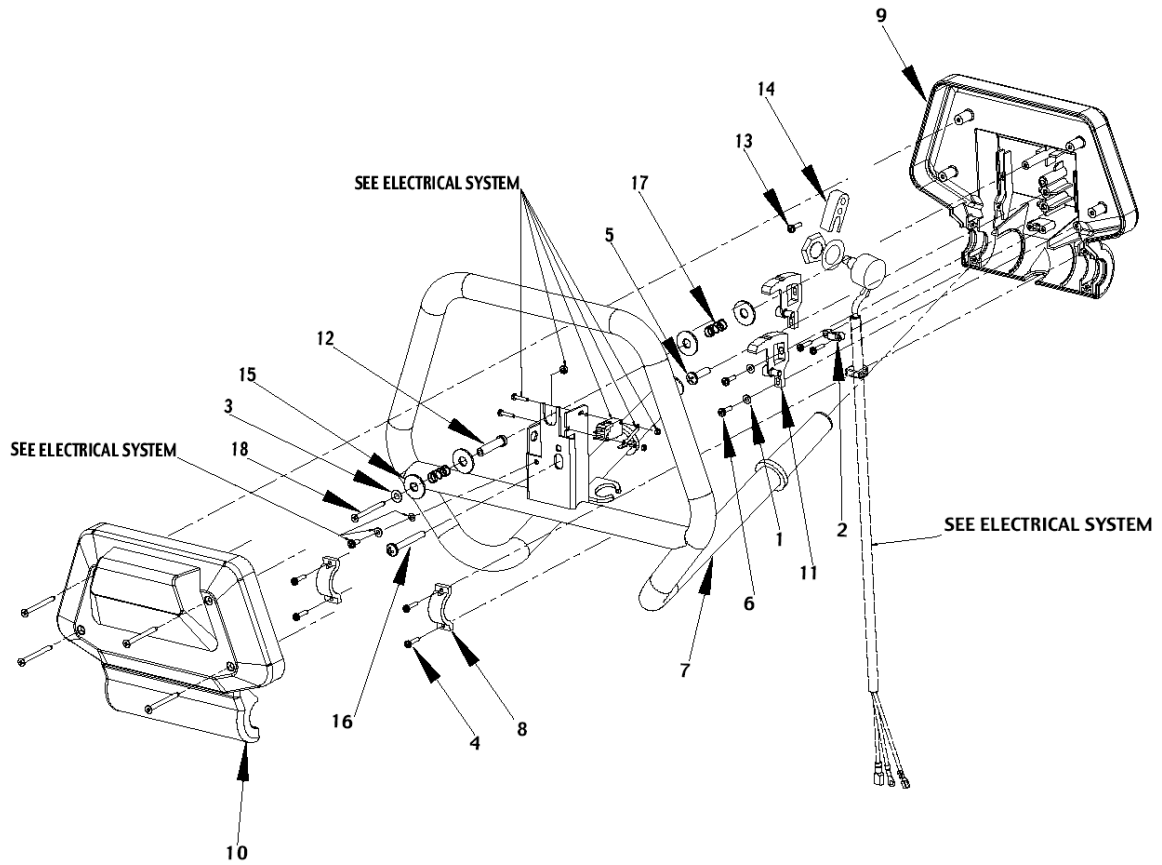
Resource notes:

Note: POSITIONS 41 AND 48 NOT MORE AVAILABLE AS SINGLE PART. REPLACED BY THE KIT 9097499000 WHICH INCLUDES BOTH BLADES Pos.No.0 means "Not shown"

Pos.	Product no	QTY	Description	Notes
00	910000280	1	BLADES SQUEE. 830MM 33 GUM RUBBER KIT	
00	909 5004 000	1	BLADES SQUEE. OIL RESIST.W/FILTERS KIT	[1]
00	909 6859 000	1	BLADES SQUEEGEE 830MM 33 PU KIT	
00	909 5006 000	1	BLADES SQUEEGEE STD W/FILTERS KIT	[2]
01	L08603935	1	CAP BLACK	[3]
02	L08812230	1	LEVER SQUEEGEE LIFTING GALV.	[1]
03	L08812356	1	COVER.PIN D.8	[2]
04	33003814	1	SCREW M10X65 HEX HD P/THD ISO4014	[1]
05	L08604251	1	WASHER PLAIN M10X30X2.5 ISO7093	
06	L08238300	2	WASHER PLAIN D.15X25X3 NYLON	
07	L08812391	1	SPACER D.10.4X14 H.47 GALV.	[1]
08	33005608	1	NUT LOCK HEX M10 LOW ISO10511	
09	L08812516	1	FIXTURE KIT	[1]
10	L08603655	1	PLATE.SQUEEGEE SUPPORT	[1]
11	L08812521	1	HARDWARE SQUEEGEE FIXING KIT	[2]
12	L08601854	2	SPACER 7X10X8	[1]
13	1466530000	2	WASHER PLAIN M6X18 ISO7093 10 PCS SET	
14	L08232600	2	SCREW M6X25 HEX HD ISO4017 SCOTCH-GRIP	[2]
15	33023667	2	NUT LOCK HEX M6 LOW ISO10511 5 PCS SET	
16	L08602422	1	SPACER D.8X10 H.7 SS	
17	33005533	2	NUT HEX M8 LOW ISO4035	
18	L08601509	1	PIN MET. SQUEEGEE SUPPORT	
19	L08601574	1	HANDWHEEL M8X55	
20	L08812518	1	HARDWARE ADJUSTING KIT	
21	L08812349	1	KNOB	
22	L08812362	1	CABLE SQUEEGEE LIFTING L.420MM	
23	1466530000	2	WASHER PLAIN M6X18 ISO7093 10 PCS SET	
24	L08232600	1	SCREW M6X25 HEX HD ISO4017 SCOTCH-GRIP	[2]
25	9097637000	1	SQUEEGEE FIXING KIT	
26	L08812228	1	HOLDER.SQUEEGEE	[1]
27	L08812519	1	HOLDER SQUEEGEE KIT	[1]
28	L08603657	1	ARM LINKAGE KIT	[3]
29	9098321000	1	LATCH SQUEEGEE	
30	L08602460	2	ROLLER BUMPER PLAST.	
31	9100000962	1	SQUEEGEE 830MM 33 METAL SIP	
32	9100000559	2	WHEEL D.51 GREY SIP	
33	9100000573	1	WHEEL SQUEEGEE KIT	
34	L08603666	2	BRACKET.SQUEEGEE WHEEL	[1]
35	L08603685	2	NUT LOCK HEX M4 LOW SS ISO10511	
36	L08603688	6	Hex Nut selflocking SS M5	[2]
37	L08603682	8	NUT LOCK HEX M6 LOW SS ISO10511	
38	L08603684	2	SCREW M4X10 PAN HD PHIL SS ISO7045	
39	L08603880	1	ROLLER BUMPER KIT	
40	L08603687	4	Screw hex hd M5x20 SS	[2]
42	909 6356 000	2	KNOB WING M6 FEMALE 5 PCS SET	
43	L08603831	1	STRAP FRONT METAL F SQUEEGEE 830MM 33	
44	L08603834	1	STRAP REAR RT METAL F SQUEEGEE 830MM 33	[4]
45	L08603833	1	STRAP REAR LT METAL F SQUEEGEE 830MM 33	[4]
46	L08812937	2	SPACER 6.3X9.5 H.21 ZNT	[1]
47	L08812948	2	SPACER D.5.1X8 H.33.5 BRASS	
49	909 5372 000	1	SQUEEGEE 830MM 33 METAL KIT	

## Part Notes:

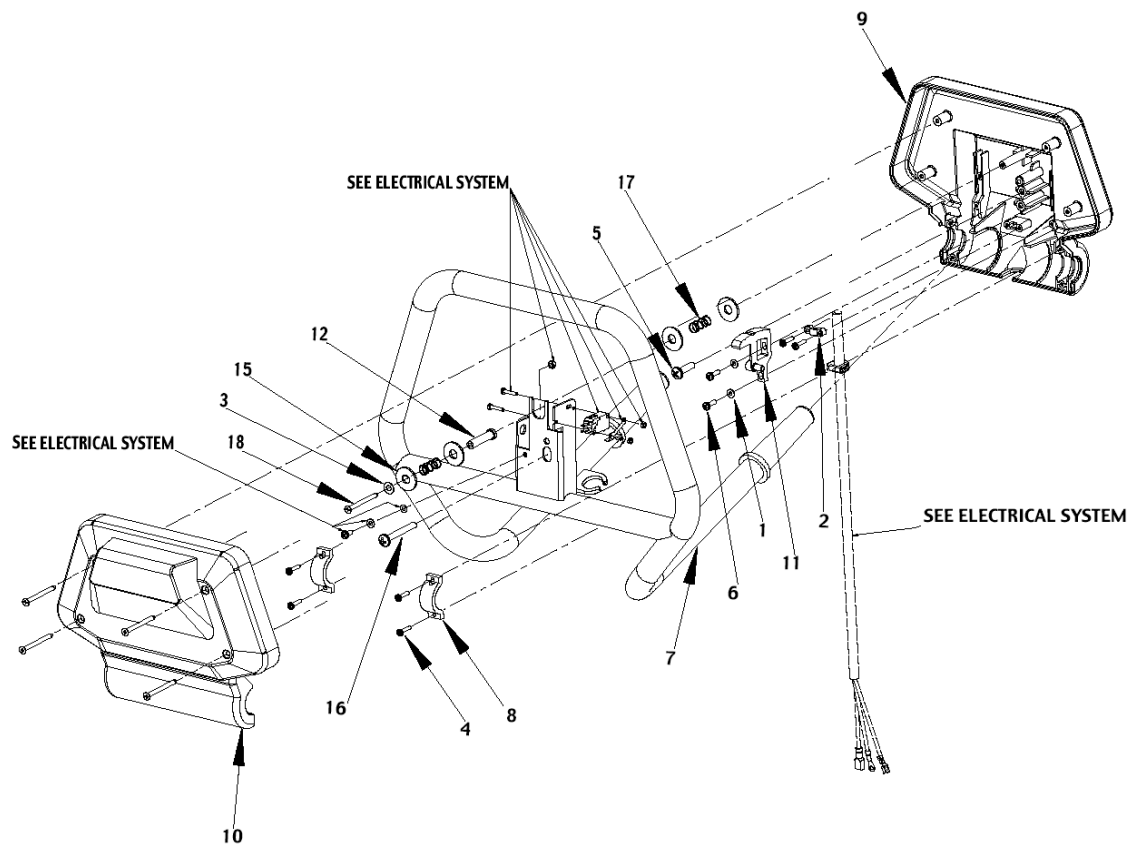
- [1] - GUARANTEE DATE EXPIRED
- [2] - NO LONGER AVAILABLE
- [3] - STOCK COVERS GUARANTEE
- [4] - ALTERNATIVE USE 909 6894 000



Pos.	Product no	QTY	Description	Notes
01	L08200800	4	WASHER PLAIN M4X9 SS ISO7089	
02	L08600168	1	BLOCK CABLE FIXING	
03	33023208	1	WASHER PLAIN M8 ISO7089 10 PCS SET	
04	L08603192	6	SCREW 3.6X16 PAN PHIL W/O BIT F PLASTIC	[1]
05	L08603377	1	SCREW 6X25 PAN PHIL W/O BIT F PLASTIC	[1]
06	L08603668	4	SCREW 4X14 PHIL W/O BIT THD FORM F PLAST	
07	L08812276	1	Handle bar	[2]
08	L08812279	2	COLLAR PLAST. F HANDLE BAR	
09	L08812280	1	HOUSING SWITCH LOWER PLAST.	[2]
10	L08812281	1	HOUSING SWITCH UPPER PLAST.	[2]
11	L08812282	2	CAM MICROSWITCH HANDLE PLAST.	
12	L08812316	1	BUSHING GALV. DRIVE CONTROL	[2]
13	L08604077	1	SCREW M4X10 PAN HD PHIL ISO7045	[3]
14	909 6038 000	1	CONNECTING ROD PLAST. F POTENTIOMETER	
15	L08812337	4	WASHER PLAIN D.9X25X2 NYLON	[1]
16	L08812341	1	SCREW 6X50 PAN PHIL W/O BIT F PLASTIC	[2]
17	L08812343	2	SPRING COMPRESSION D.E.10.5 WIRE D.0.65	[3]
18	L08812421	5	SCREW 4,2x50 SELF C/SUNK PHIL BR ISO7050	[3]

## Part Notes:

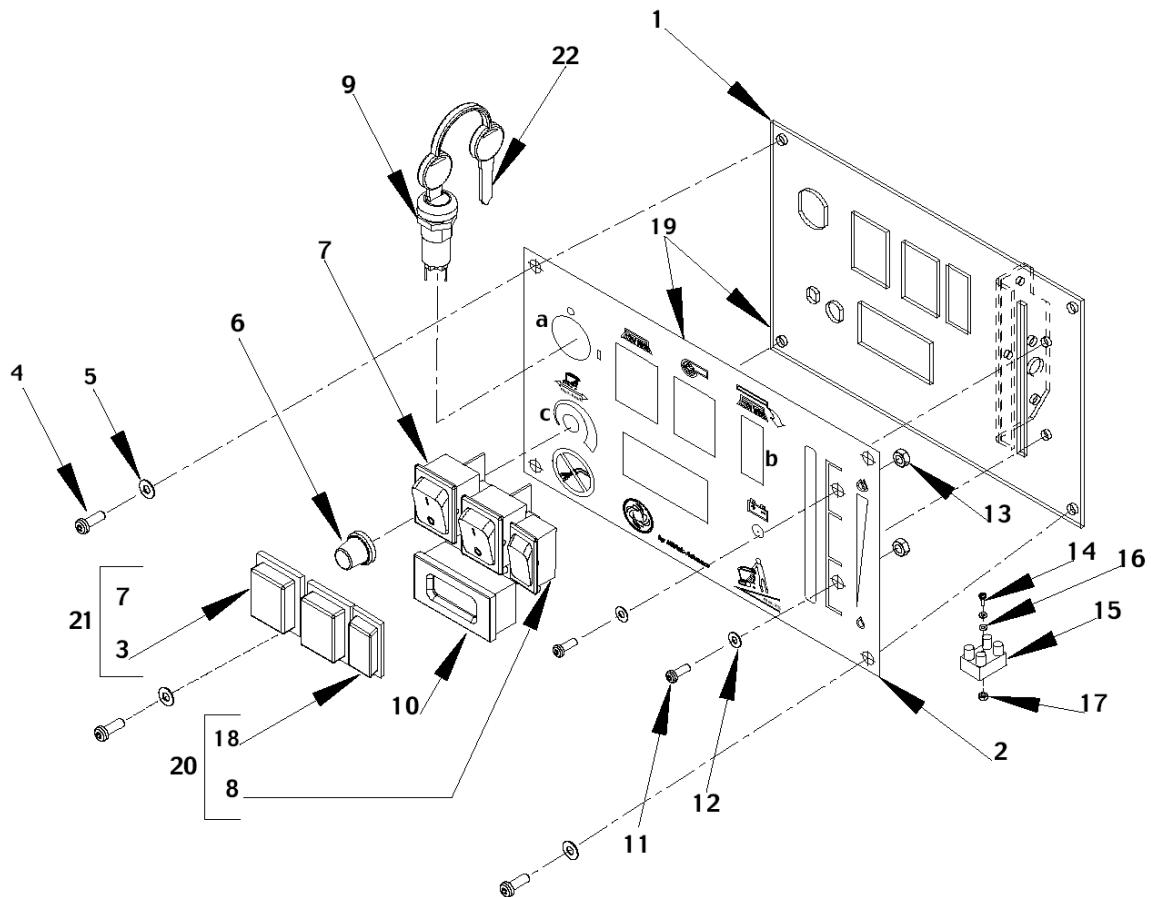
- [1] - STOCK COVERS GUARANTEE
- [2] - GUARANTEE DATE EXPIRED
- [3] - NO LONGER AVAILABLE



Pos.	Product no	QTY	Description	Notes
01	L08200800	4	WASHER PLAIN M4X9 SS ISO7089	
02	L08600168	1	BLOCK CABLE FIXING	
03	33023208	1	WASHER PLAIN M8 ISO7089 10 PCS SET	
04	L08603192	1	SCREW 3.6X16 PAN PHIL W/O BIT F PLASTIC	[1]
05	L08603377	1	SCREW 6X25 PAN PHIL W/O BIT F PLASTIC	[1]
06	L08603668	2	SCREW 4X14 PHIL W/O BIT THD FORM F PLAST	
07	L08812276	1	Handle bar	[2]
08	L08812279	2	COLLAR PLAST. F HANDLE BAR	
09	L08812280	1	HOUSING SWITCH LOWER PLAST.	[2]
10	L08812281	1	HOUSING SWITCH UPPER PLAST.	[2]
11	L08812282	1	CAM MICROSWITCH HANDLE PLAST.	
12	L08812316	1	BUSHING GALV. DRIVE CONTROL	[2]
15	L08812337	4	WASHER PLAIN D.9X25X2 NYLON	[1]
16	L08812341	1	SCREW 6X50 PAN PHIL W/O BIT F PLASTIC	[2]
17	L08812343	2	SPRING COMPRESSION D.E.10.5 WIRE D.0.65	[3]
18	L08812421	5	SCREW 4,2x50 SELF C/SUNK PHIL BR ISO7050	[3]

## Part Notes:

- [1] - STOCK COVERS GUARANTEE
- [2] - GUARANTEE DATE EXPIRED
- [3] - NO LONGER AVAILABLE



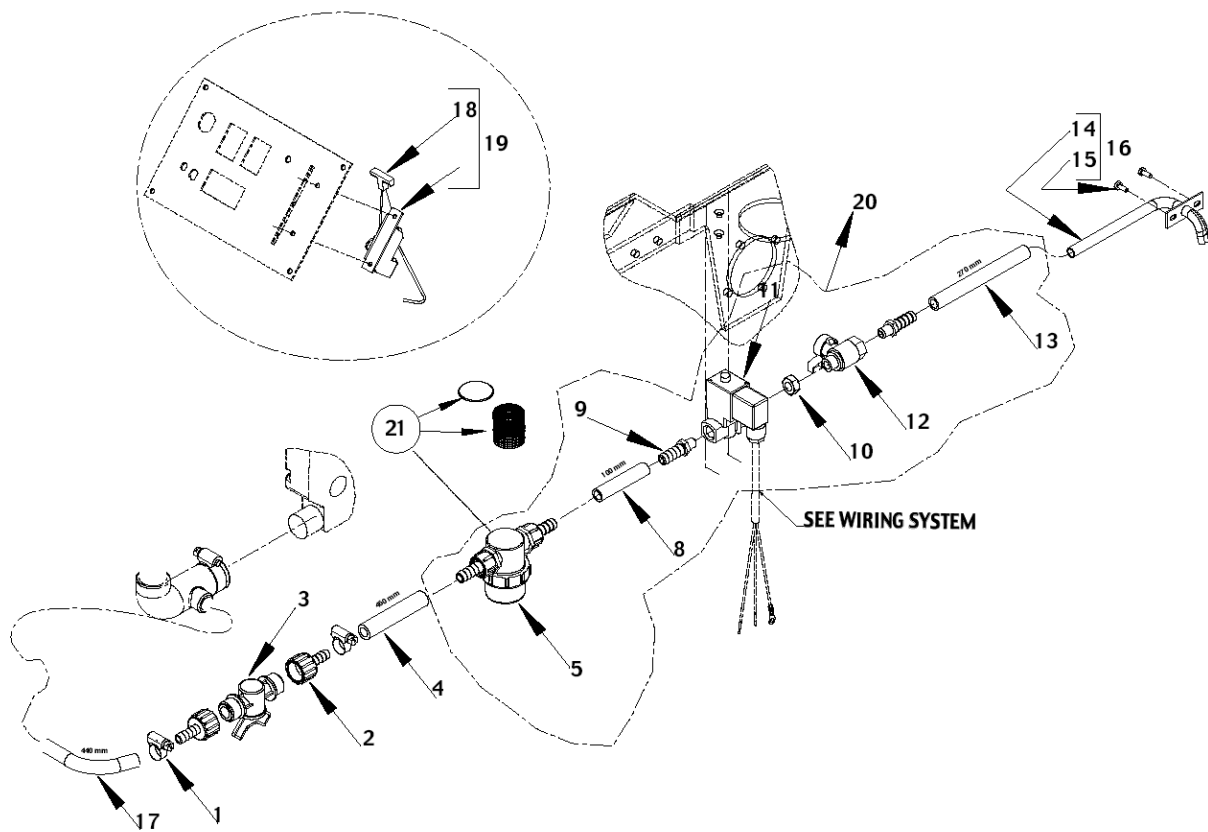
Resource notes:

pos.19 :L08812522 for drive machines pos.19 :L08812523 for machines without traction

Pos.	Product no	QTY	Description	Notes
01	L08812288	1	Board	[1]
02	L08812359	1	DECAL CONTROL PANEL	[1]
03	L08603193	2	COVER SWITCH	[2]
04	L08812804	4	SCREW 3.9X12 PHIL W/O BIT THD FORM F PLA	[1]
05	L08200800	4	WASHER PLAIN M4X9 SS ISO7089	
06	L08602062	1	HANDWHEEL F/POTENTIOMETER	[3]
07	909 5667 000	2	SWITCH COMPLETE	[2]
08	L08603944	1	SWITCH	[1]
09	L08812604	1	SWITCH IGNITION STARTER UL	
10	L08812350	1	HOUR METER 24V	[4]
11	L08604077	2	SCREW M4X10 PAN HD PHIL ISO7045	[3]
12	33023198	2	WASHER PLAIN M4 ISO7089 10 PCS SET	
13	33005500	2	NUT HEX M4 MEDIUM ISO4032	
14	L08603705	1	SCREW M3X25 PAN HD PHIL ISO7045	[1]
15	L08812062	1	BOARD TERMINAL 2 ELEMENT	[1]
16	33005862	2	WASHER SERR. EXT. M4 DIN6798-A	
17	33005499	1	NUT HEX M3 MEDIUM ISO4032	[1]
18	L08603945	1	PROTECTION CAP	[3]
19	L08812522	1	Switch panel w/decal	[1]
19	L08812523	1	SWITCH PANEL W/ DECAL	[1]
20	L08603950	1	SWITCH WITH PROTECTION KIT	[1]
21	909 5667 000	1	SWITCH COMPLETE	[2]
22	909 5100 000	1	KEY -1PC-	

## Part Notes:

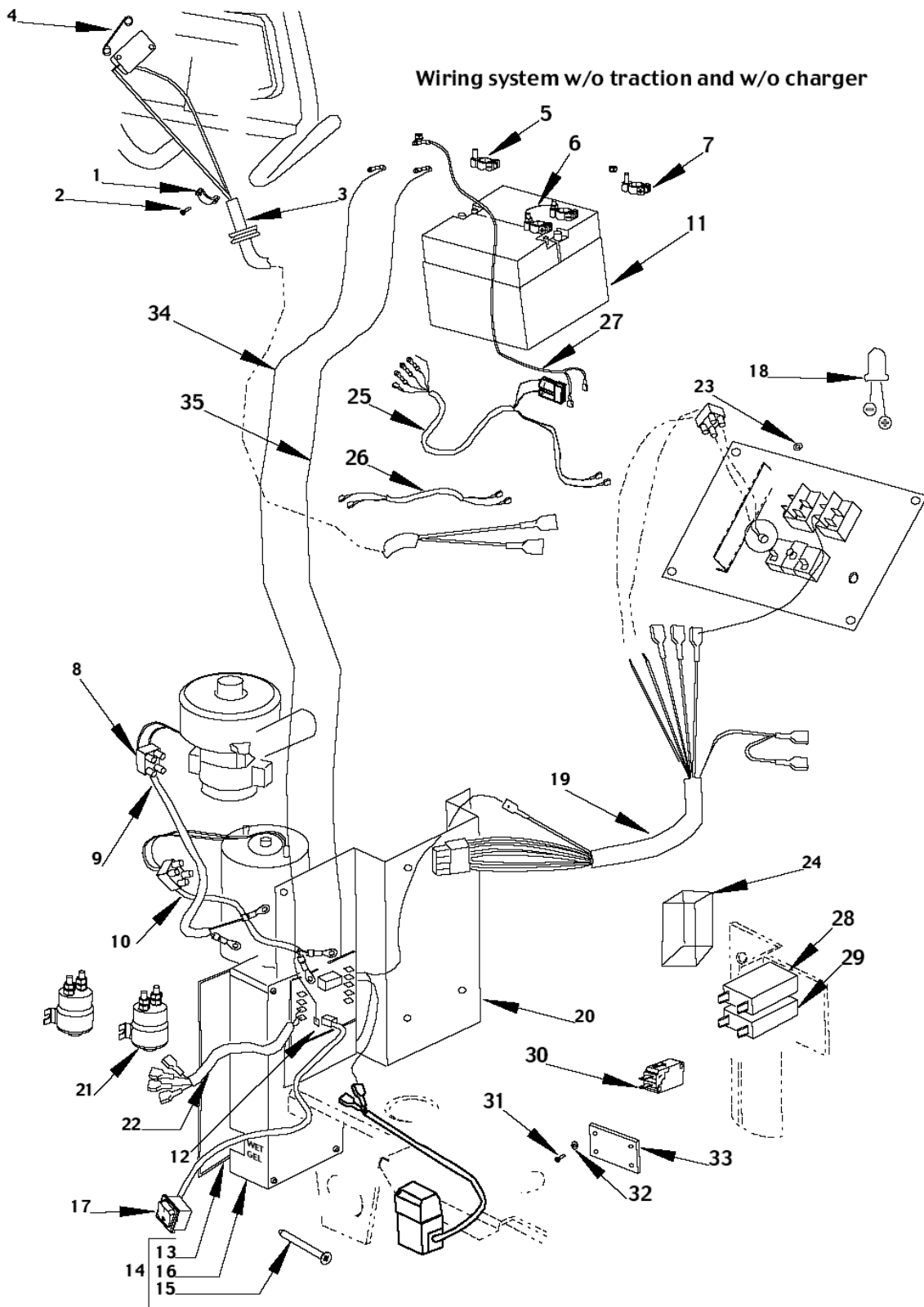
- [1] - GUARANTEE DATE EXPIRED
- [2] - STOCK COVERS GUARANTEE
- [3] - NO LONGER AVAILABLE
- [4] - NOT FOR SALE VIA EDC



Pos.	Product no	QTY	Description	Notes
01	1466344000	2	TIE CABLE 4.8X200 BLACK 10 PCS SET	
02	909 5022 000	2	HOLDER RUBBER D.10	[1]
03	909 5023 000	1	VALVE 2 WAYS MALE 1/2-1/2	[1]
04	909 5028 000	1	HOSE PVC W/SPIRAL D.10X16 L.460MM	[2]
05	9097166000	1	FILTER WATER BARB HOSE D.12.5 KIT	
08	909 5026 000	1	HOSE PVC W/SPIRAL D.10X16 L.100MM SIP	
09	L08601624	2	BARB HOSE STRAIGHT D.10 1/4 PLASTIC	
10	L08812257	1	NUT HEX 1/4 BRASS	[2]
11	909 5290 000	1	SOLENOID VALVE W BRACKET BA 450/530/610D	[1]
12	L08812427	1	VALVE 1/4 FOR SOLEN.VALVE	[1]
13	L08603854	1	HOSE PVC W/SPIRAL D.10X16 L.270MM SIP	[2]
14	L08812326	1	PIPE COPPER F WATER BRUSH	[3]
15	146 0632 000	2	SCREW M4X8 HEX HD F/THD ISO4017	[1]
16	L08812490	1	PIPE W/SUPPORT KIT	[2]
17	909 5027 000	1	HOSE PVC W/SPIRAL D.10X16 L.440MM SIP	[1]
18	L08603790	1	KNOB WATER LEVEL PLAST.	[1]
19	L08603791	1	LEVER WATER REGULAT.KIT	[1]
20	909 5035 000	1	SOLENOID VALVE ASSY	[1]
20	L08812484	1	SOLENOID VALVE KIT	[2]
21	L08603893	1	NET FILTER WITH GASKET KIT	

## Part Notes:

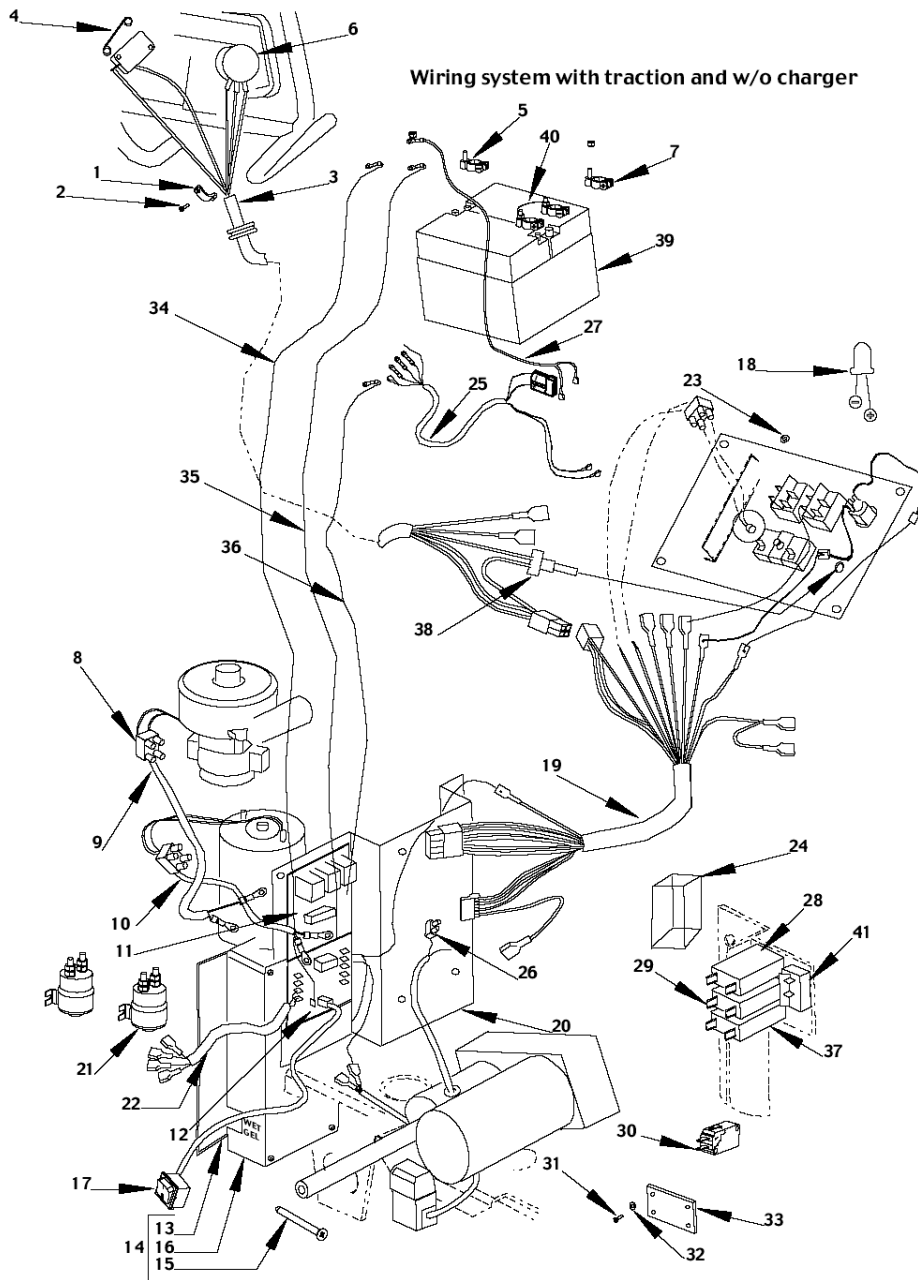
- [1] - STOCK COVERS GUARANTEE
- [2] - GUARANTEE DATE EXPIRED
- [3] - NO LONGER AVAILABLE



Pos.	Product no	QTY	Description	Notes
01	L08600168	1	BLOCK CABLE FIXING	
02	L08603192	2	SCREW 3.6X16 PAN PHIL W/O BIT F PLASTIC	[1]
03	L08812445	1	Cable switch housing	[2]
04	1466509000	1	CONTACT F MICROSWITCH SIP	
05	9100000883	2	CLAMP BATTERY POLE MINUS 2 PCS SET	
06	L08812060	1	CABLE.BATTERY BRIDGE	[2]
07	9100000882	2	CLAMP BATTERY POLE PLUS 2 PCS SET	
08	L08187300	3	BOARD TERMINAL 2 ELEMENT	[2]
09	L08812397	1	HARNESS VAC.MOT/EL.CARD	[3]
10	L08603710	1	Cable brush motor	
11	L08812758	1	CONTAINER BATTERY	[4]
12	1466209000	1	CARD ELECTRONIC SIP	[1]
14	L08812625	1	COVER CPL	[2]
15	L08812444	4	SCREW	[2]
16	9099432000	1	COVER ELECTRICAL BOX KIT	[1]
17	L08812574	1	CABLE	[2]
18	L08812061	1	LED RED D.5 1.6-2V 10-20mA	[2]
19	L08812386	1	CABLE	
20	L08812289	1	Support f/electronic syst	[2]
21	145 0300 000	2	SWITCH ELECTROM.24V 120A	
22	L08603716	1	Cable fuses	
23	L08812801	1	SPACER 4.3X10 H.4 PLAST.	[2]
24	L08812577	1	COVER BLACK F FUSES PLAST.	[2]
25	L08812407	1	Cable with battery plug	
26	L08603713	1	Cable fuses	
27	L08812394	1	HARNESS FUSES/BATTERY -	[5]
28	L08812389	1	CIRCUIT BREAKER 25A	
29	909 5706 000	1	CIRCUIT BREAKER 30A	
30	L08812294	1	MICRO SWITCH	[2]
31	L08093600	4	SCREW M3X16 PAN HD PHIL ISO7045	[1]
32	33005910	4	WASHER PLAIN M3X7 ISO7089	
33	L08812575	1	Insulation Panel	[2]
34	L08812401	1	STRAND, RED	[6]
35	L08812402	1	STRAND, BLACK	[2]

## Part Notes:

- [1] - STOCK COVERS GUARANTEE
- [2] - GUARANTEE DATE EXPIRED
- [3] - TSB 2004-015
- [4] - NO LONGER AVAILABLE
- [5] - SEE TSB 2004-15
- [6] - SEE TSB 2004-015



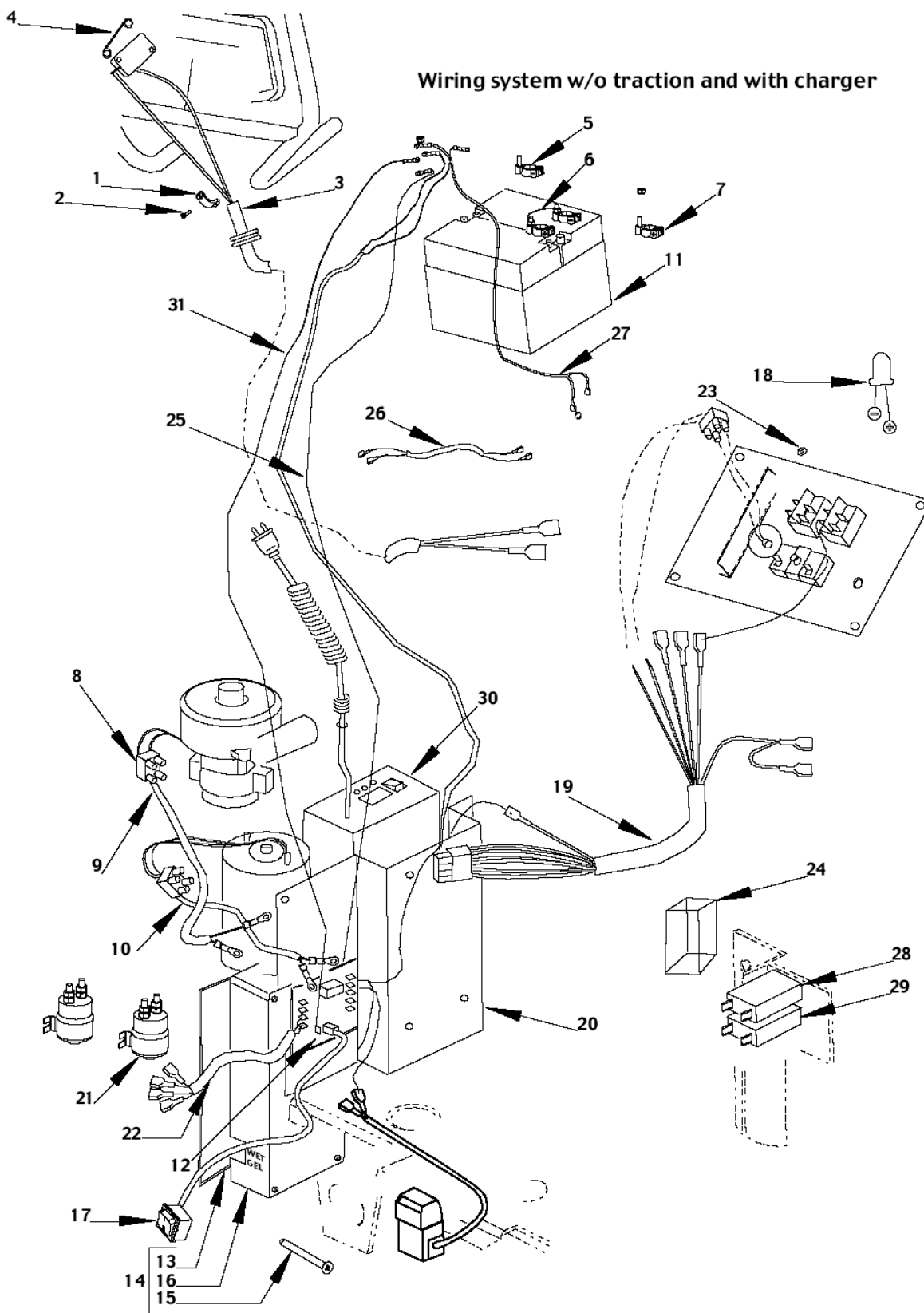
Resource notes:

Note:

Pos.	Product no	QTY	Description	Notes
01	L08600168	1	BLOCK CABLE FIXING	
02	L08603192	2	SCREW 3.6X16 PAN PHIL W/O BIT F PLASTIC	[1]
03	L08812379	1	HARNESS TRACTION	[2]
04	1466509000	1	CONTACT F MICROSWITCH SIP	
05	9100000883	2	CLAMP BATTERY POLE MINUS 2 PCS SET	
06	L08812292	1	POTENTIOMETER 5K	
07	9100000882	2	CLAMP BATTERY POLE PLUS 2 PCS SET	
08	L08187300	3	BOARD TERMINAL 2 ELEMENT	[3]
09	L08812397	1	HARNESS VAC.MOT/EL.CARD	[4]
10	L08603710	1	Cable brush motor	
11	1466208000	1	CONTROLLER DRIVE WHEEL SIP	[1]
12	1466209000	1	CARD ELECTRONIC SIP	[1]
14	L08812625	1	COVER CPL	[3]
15	L08812444	4	SCREW	[3]
16	9099432000	1	COVER ELECTRICAL BOX KIT	[1]
17	L08812574	1	CABLE	[3]
18	L08812061	1	LED RED D.5 1.6-2V 10-20mA	[3]
19	L08812599	1	Cable Internal	
20	L08812289	1	Support f/electronic syst	[3]
20	909 5068 000	1	SUPPORT ELECTR.CARD SS	[3]
21	145 0300 000	2	SWITCH ELECTROM.24V 120A	
22	L08603716	1	Cable fuses	
23	L08812801	1	SPACER 4.3X10 H.4 PLAST.	[3]
24	L08812577	1	COVER BLACK F FUSES PLAST.	[3]
25	L08812407	1	Cable with battery plug	
26	L08812470	1	BOARD TERMINAL.1 STUD	[3]
27	L08812394	1	HARNESS FUSES/BATTERY -	[5]
28	L08812389	1	CIRCUIT BREAKER 25A	
29	909 5706 000	1	CIRCUIT BREAKER 30A	
30	L08812294	1	MICRO SWITCH	[3]
31	L08093600	4	SCREW M3X16 PAN HD PHIL ISO7045	[1]
32	33005910	4	WASHER PLAIN M3X7 ISO7089	
33	L08812575	1	Insulation Panel	[3]
34	L08812401	1	STRAND, RED	[6]
35	L08812402	1	STRAND, BLACK	[3]
36	L08812400	1	Strand Black	
37	L08812872	1	CIRCUIT BREAKER 15A	[3]
38	L08812371	1	POTENTIOMETER 47K	
39	L08812758	1	CONTAINER BATTERY	[2]
40	L08812060	1	CABLE.BATTERY BRIDGE	[3]
41	909 5667 000	1	SWITCH COMPLETE	[1]

## Part Notes:

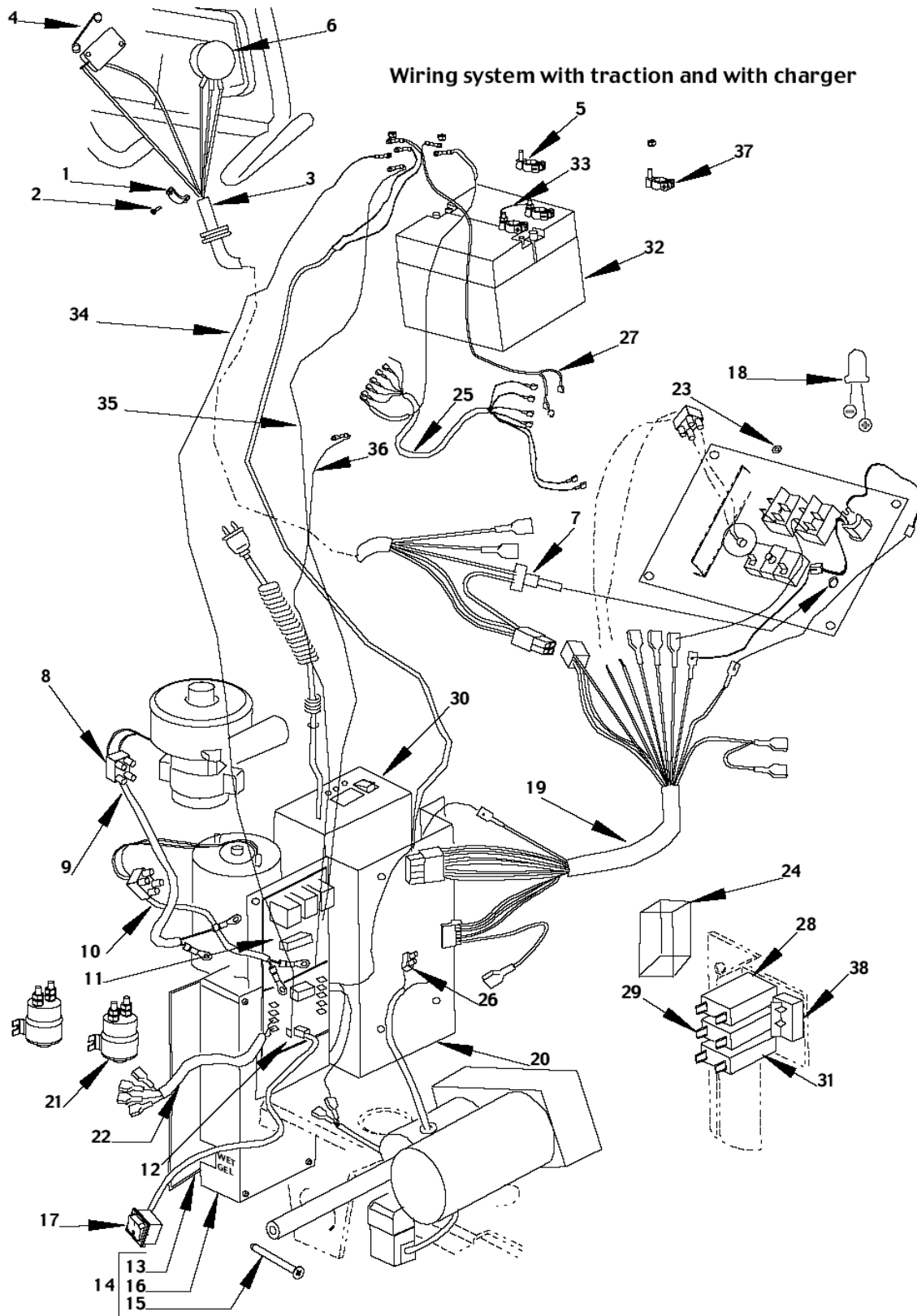
- [1] - STOCK COVERS GUARANTEE
- [2] - NO LONGER AVAILABLE
- [3] - GUARANTEE DATE EXPIRED
- [4] - TSB 2004-015
- [5] - SEE TSB 2004-15
- [6] - SEE TSB 2004-015



Pos.	Product no	QTY	Description	Notes
01	L08600168	1	BLOCK CABLE FIXING	
02	L08603192	2	SCREW 3.6X16 PAN PHIL W/O BIT F PLASTIC	[1]
03	L08812445	1	Cable switch housing	[2]
04	1466509000	1	CONTACT F MICROSWITCH SIP	
05	9100000883	2	CLAMP BATTERY POLE MINUS 2 PCS SET	
06	L08812060	1	CABLE.BATTERY BRIDGE	[2]
07	9100000882	2	CLAMP BATTERY POLE PLUS 2 PCS SET	
08	L08187300	3	BOARD TERMINAL 2 ELEMENT	[2]
09	L08812397	1	HARNESS VAC.MOT/EL.CARD	[3]
10	L08603710	1	Cable brush motor	
11	L08812758	1	CONTAINER BATTERY	[4]
12	1466209000	1	CARD ELECTRONIC SIP	[1]
14	L08812625	1	COVER CPL	[2]
15	L08812444	1	SCREW	[2]
16	9099432000	1	COVER ELECTRICAL BOX KIT	[1]
17	L08812574	1	CABLE	[2]
18	L08812061	1	LED RED D.5 1.6-2V 10-20mA	[2]
19	L08812599	1	Cable Internal	
20	L08812289	1	Support f/electronic syst	[2]
21	145 0300 000	2	SWITCH ELECTROM.24V 120A	
22	L08603716	1	Cable fuses	
23	L08812801	1	SPACER 4.3X10 H.4 PLAST.	[2]
24	L08812577	1	COVER BLACK F FUSES PLAST.	[2]
25	L08812402	1	STRAND, BLACK	[2]
26	L08603713	1	Cable fuses	
27	L08812394	1	HARNESS FUSES/BATTERY -	[5]
28	L08812389	1	CIRCUIT BREAKER 25A	
29	909 5706 000	1	CIRCUIT BREAKER 30A	
30	L08812821	1	CHARGER BATT. ON BOARD 24V 13A 220V	[2]
31	L08812401	1	STRAND, RED	[6]

## Part Notes:

- [1] - STOCK COVERS GUARANTEE
- [2] - GUARANTEE DATE EXPIRED
- [3] - TSB 2004-015
- [4] - NO LONGER AVAILABLE
- [5] - SEE TSB 2004-15
- [6] - SEE TSB 2004-015



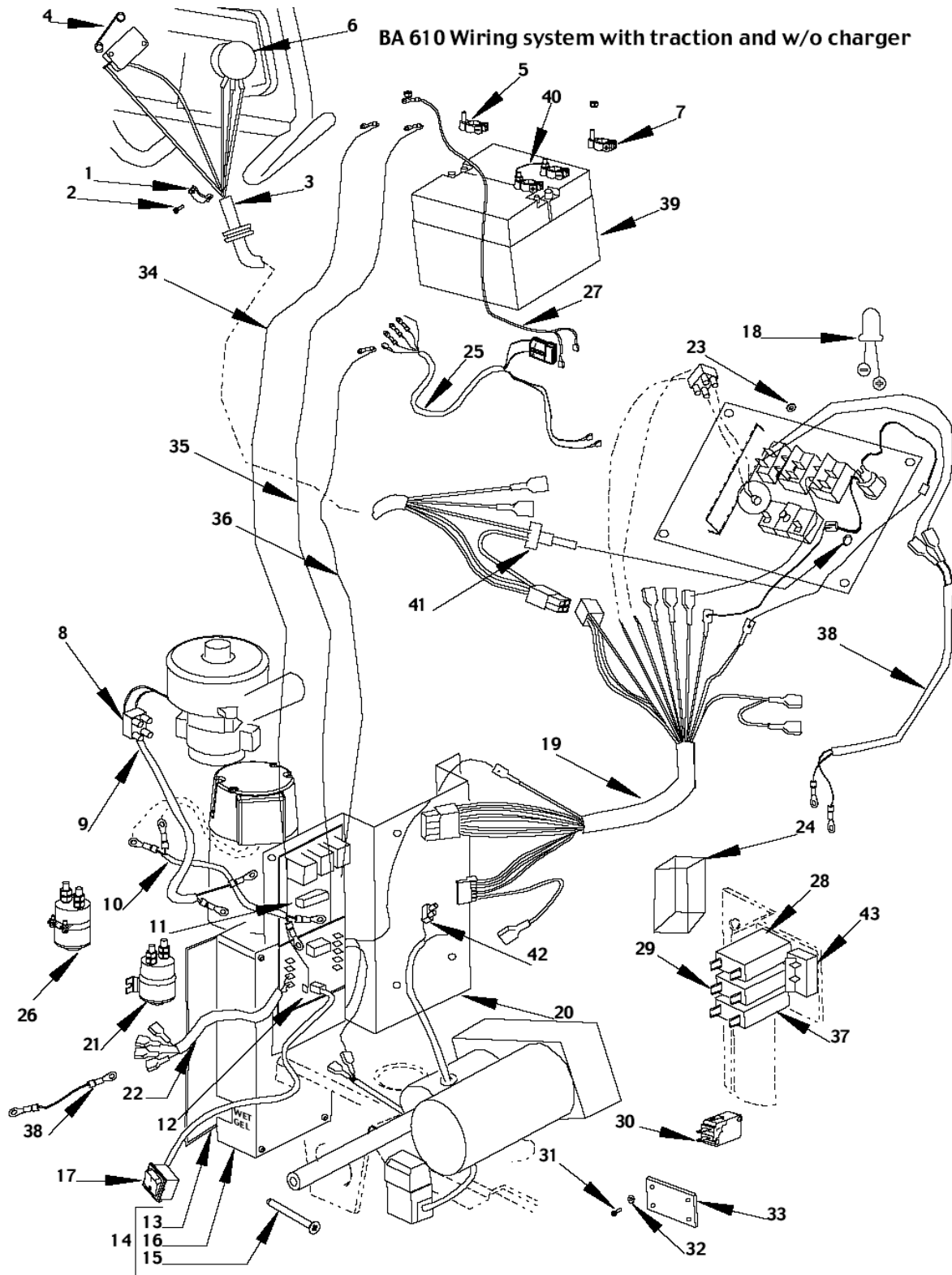
Resource notes:

Note:

Pos.	Product no	QTY	Description	Notes
01	L08600168	1	BLOCK CABLE FIXING	
02	L08603192	2	SCREW 3.6X16 PAN PHIL W/O BIT F PLASTIC	[1]
03	L08812379	1	HARNESS TRACTION	[2]
04	1466509000	1	CONTACT F MICROSWITCH SIP	
05	9100000883	2	CLAMP BATTERY POLE MINUS 2 PCS SET	
06	L08812292	1	POTENTIOMETER 5K	
07	L08812371	1	POTENTIOMETER 47K	
08	L08187300	3	BOARD TERMINAL 2 ELEMENT	[3]
09	L08812397	1	HARNESS VAC.MOT/EL.CARD	[4]
10	L08603710	1	Cable brush motor	
11	1466208000	1	CONTROLLER DRIVE WHEEL SIP	[1]
12	1466209000	1	CARD ELECTRONIC SIP	[1]
14	L08812625	1	COVER CPL	[3]
15	L08812444	4	SCREW	[3]
16	9099432000	1	COVER ELECTRICAL BOX KIT	[1]
17	L08812574	1	CABLE	[3]
18	L08812061	1	LED RED D.5 1.6-2V 10-20mA	[3]
19	L08812599	1	Cable Internal	
20	L08812289	1	Support f/electronic syst	[3]
21	145 0300 000	2	SWITCH ELECTROM.24V 120A	
22	L08603716	1	Cable fuses	
23	L08812801	1	SPACER 4.3X10 H.4 PLAST.	[3]
24	L08812577	1	COVER BLACK F FUSES PLAST.	[3]
25	L08603712	1	Traction wire set	
26	L08812470	1	BOARD TERMINAL.1 STUD	[3]
27	L08812394	1	HARNESS FUSES/BATTERY -	[5]
28	L08812389	1	CIRCUIT BREAKER 25A	
29	909 5706 000	1	CIRCUIT BREAKER 30A	
30	L08812821	1	CHARGER BATT. ON BOARD 24V 13A 220V	[3]
31	L08812872	1	CIRCUIT BREAKER 15A	[3]
32	L08812758	1	CONTAINER BATTERY	[2]
33	L08812060	1	CABLE.BATTERY BRIDGE	[3]
34	L08812401	1	STRAND, RED	[6]
35	L08812402	1	STRAND, BLACK	[3]
36	L08812400	1	Strand Black	
37	9100000882	2	CLAMP BATTERY POLE PLUS 2 PCS SET	
38	909 5667 000	1	SWITCH COMPLETE	[1]

## Part Notes:

- [1] - STOCK COVERS GUARANTEE
- [2] - NO LONGER AVAILABLE
- [3] - GUARANTEE DATE EXPIRED
- [4] - TSB 2004-015
- [5] - SEE TSB 2004-15
- [6] - SEE TSB 2004-015



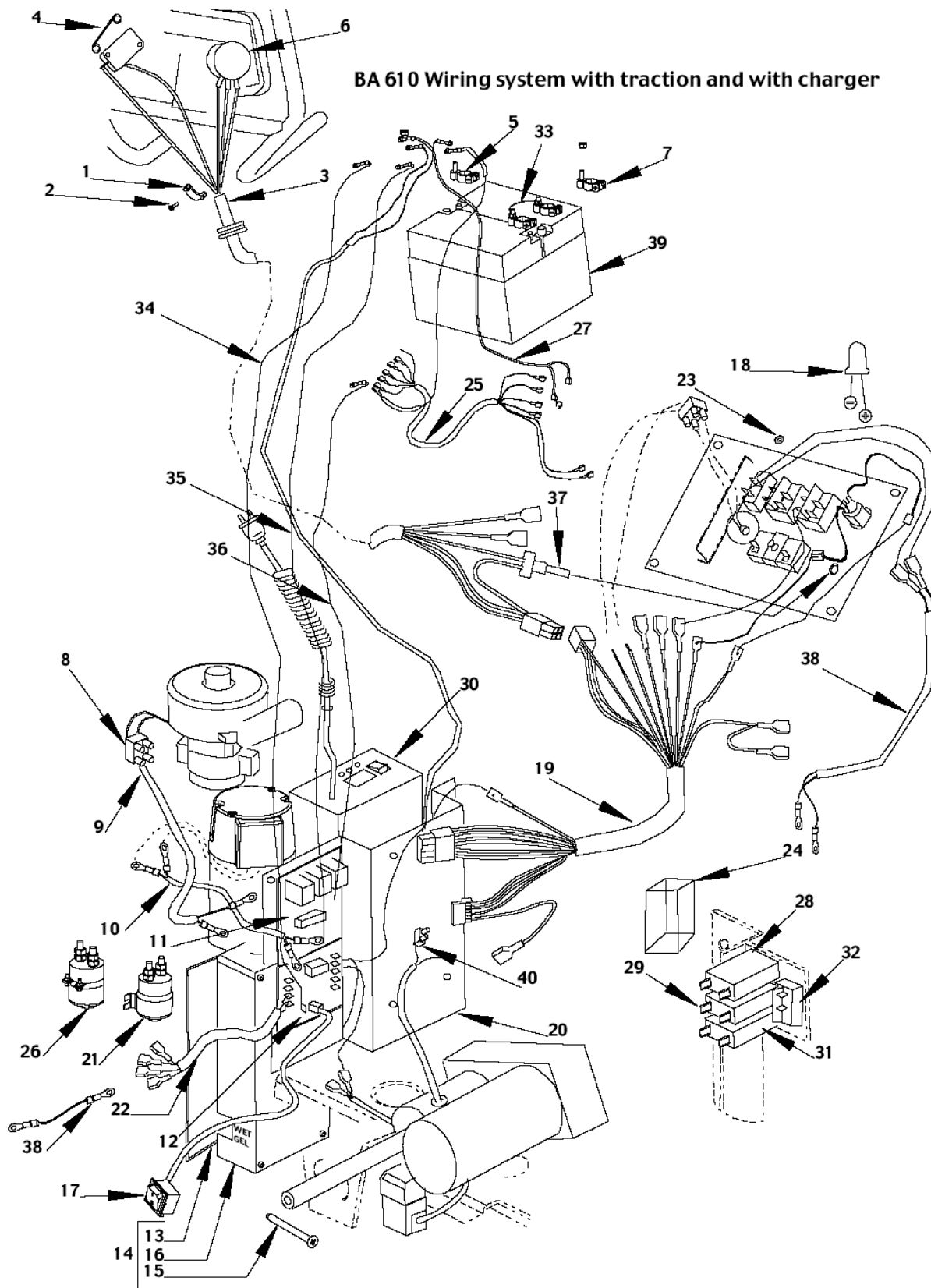
Resource notes:

Note:

Pos.	Product no	QTY	Description	Notes
01	L08600168	1	BLOCK CABLE FIXING	
02	L08603192	2	SCREW 3.6X16 PAN PHIL W/O BIT F PLASTIC	[1]
03	L08812379	1	HARNESS TRACTION	[2]
04	1466509000	1	CONTACT F MICROSWITCH SIP	
05	9100000883	1	CLAMP BATTERY POLE MINUS 2 PCS SET	
06	L08812292	1	POTENTIOMETER 5K	
07	9100000882	2	CLAMP BATTERY POLE PLUS 2 PCS SET	
08	L08187300	3	BOARD TERMINAL 2 ELEMENT	[3]
09	L08812397	1	HARNESS VAC.MOT/EL.CARD	[4]
10	909 5013 000	1	HARNESS BRUSH MOTOR	[3]
11	1466208000	1	CONTROLLER DRIVE WHEEL SIP	[1]
12	1466209000	1	CARD ELECTRONIC SIP	[1]
14	L08812625	1	COVER CPL	[3]
15	L08812444	4	SCREW	[3]
16	9099432000	1	COVER ELECTRICAL BOX KIT	[1]
17	L08812574	1	CABLE	[3]
18	L08812061	1	LED RED D.5 1.6-2V 10-20mA	[3]
19	L08812599	1	Cable Internal	
20	L08812289	1	Support f/electronic syst	[3]
21	145 0300 000	1	SWITCH ELECTROM.24V 120A	
22	L08603716	1	Cable fuses	
23	L08812801	1	SPACER 4.3X10 H.4 PLAST.	[3]
24	L08812577	1	COVER BLACK F FUSES PLAST.	[3]
25	L08812407	1	Cable with battery plug	
26	L08603934	1	SWITCH ELECTROM.24V 80A	
27	L08812394	1	HARNESS FUSES/BATTERY -	[5]
28	L08812389	1	CIRCUIT BREAKER 25A	
29	909 5706 000	1	CIRCUIT BREAKER 30A	
30	L08812294	1	MICRO SWITCH	[3]
31	L08093600	4	SCREW M3X16 PAN HD PHIL ISO7045	[1]
32	33005910	4	WASHER PLAIN M3X7 ISO7089	
33	L08812575	1	Insulation Panel	[3]
34	L08812401	1	STRAND, RED	[6]
35	L08812402	1	STRAND, BLACK	[3]
36	L08812400	1	Strand Black	
37	L08812872	1	CIRCUIT BREAKER 15A	[3]
38	L08603928	1	Harness Click-off	[3]
39	L08812758	1	CONTAINER BATTERY	[2]
40	L08812060	1	CABLE.BATTERY BRIDGE	[3]
41	L08812371	1	POTENTIOMETER 47K	
42	L08812470	1	BOARD TERMINAL.1 STUD	[3]
43	909 5667 000	1	SWITCH COMPLETE	[1]

## Part Notes:

- [1] - STOCK COVERS GUARANTEE
- [2] - NO LONGER AVAILABLE
- [3] - GUARANTEE DATE EXPIRED
- [4] - TSB 2004-015
- [5] - SEE TSB 2004-15
- [6] - SEE TSB 2004-015

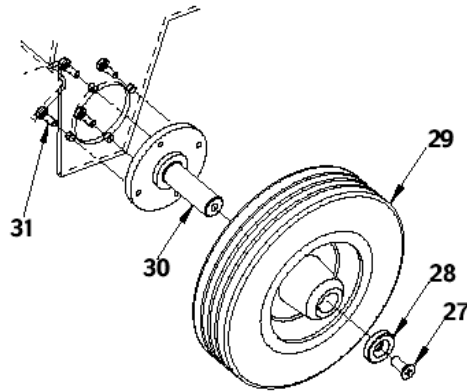


Pos.	Product no	QTY	Description	Notes
00	L08812880	1	SWITCH ELECTROMAGNETIC FOR VAC MOTOR KIT	[1]
00	L08812882	1	CARD ELECTRONIC KIT	[2]
01	L08600168	1	BLOCK CABLE FIXING	
02	L08603192	2	SCREW 3.6X16 PAN PHIL W/O BIT F PLASTIC	[3]
03	L08812379	1	HARNESS TRACTION	[2]
04	1466509000	1	CONTACT F MICROSWITCH SIP	
05	9100000883	2	CLAMP BATTERY POLE MINUS 2 PCS SET	
06	L08812292	1	POTENTIOMETER 5K	
07	9100000882	2	CLAMP BATTERY POLE PLUS 2 PCS SET	
08	L08187300	3	BOARD TERMINAL 2 ELEMENT	[1]
09	L08812397	1	HARNESS VAC.MOT/EL.CARD	[4]
10	909 5013 000	1	HARNESS BRUSH MOTOR	[1]
11	1466208000	1	CONTROLLER DRIVE WHEEL SIP	[3]
12	1466209000	1	CARD ELECTRONIC SIP	[3]
14	L08812625	1	COVER CPL	[1]
15	L08812444	4	SCREW	[1]
16	9099432000	1	COVER ELECTRICAL BOX KIT	[3]
17	L08812574	1	CABLE	[1]
18	L08812061	1	LED RED D.5 1.6-2V 10-20mA	[1]
19	L08812599	1	Cable Internal	
20	L08812289	1	Support f/electronic syst	[1]
21	145 0300 000	1	SWITCH ELECTROM.24V 120A	
22	L08603716	1	Cable fuses	
23	L08812801	1	SPACER 4.3X10 H.4 PLAST.	[1]
24	L08812577	1	COVER BLACK F FUSES PLAST.	[1]
25	L08603712	1	Traction wire set	
26	L08603934	1	SWITCH ELECTROM.24V 80A	
27	L08812394	1	HARNESS FUSES/BATTERY -	[5]
28	L08812389	1	CIRCUIT BREAKER 25A	
29	909 5706 000	1	CIRCUIT BREAKER 30A	
30	L08812821	1	CHARGER BATT. ON BOARD 24V 13A 220V	[1]
31	L08812872	1	CIRCUIT BREAKER 15A	[1]
32	909 5667 000	1	SWITCH COMPLETE	[3]
33	L08812060	1	CABLE.BATTERY BRIDGE	[1]
34	L08812401	1	STRAND, RED	[6]
35	L08812402	1	STRAND, BLACK	[1]
36	L08812400	1	Strand Black	
37	L08812371	1	POTENTIOMETER 47K	
38	L08603928	1	Harness Click-off	[1]
39	L08812758	1	CONTAINER BATTERY	[2]
40	L08812470	1	BOARD TERMINAL.1 STUD	[1]

## Part Notes:

- [1] - GUARANTEE DATE EXPIRED
- [2] - NO LONGER AVAILABLE
- [3] - STOCK COVERS GUARANTEE
- [4] - TSB 2004-015
- [5] - SEE TSB 2004-15
- [6] - SEE TSB 2004-015

**BA 450/530 without traction**



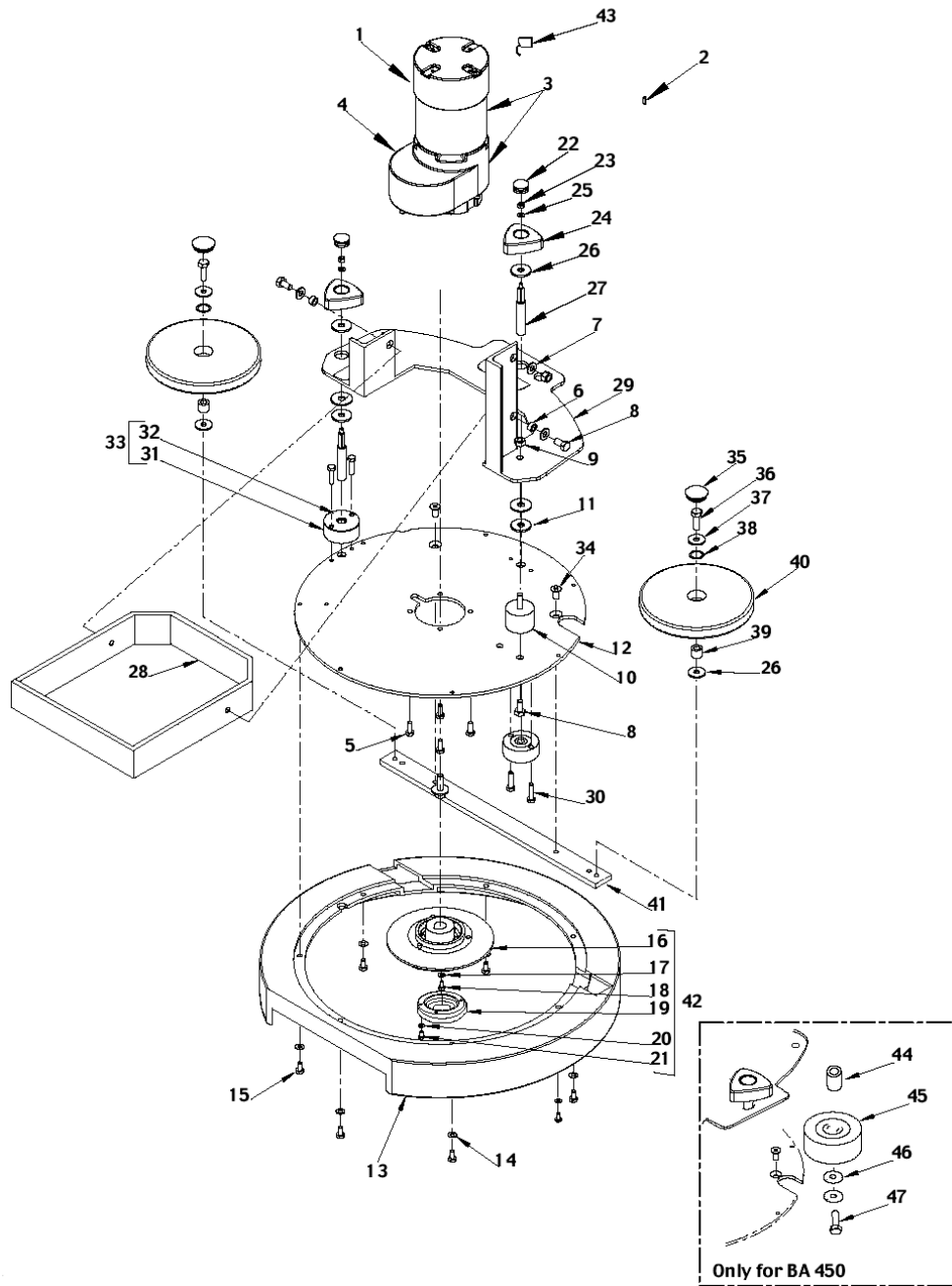
Resource notes:

Note: Pos No.0 means "Not shown"

Pos.	Product no	QTY	Description	Notes
27	L08812446	2	Screw flat head	[1]
28	9100002136	1	WASHER COUNTERSUNK 9X30 H.6 - 2 PCS SET	
29	L08603696	2	WHEEL REAR	[2]
30	L08812244	2	Wheel stud	[1]
31	L08600757	4	SCREW M6X16 HEX HD ISO4017 SCOTCH-GRIP	[1]

## Part Notes:

- [1] - GUARANTEE DATE EXPIRED
- [2] - STOCK COVERS GUARANTEE



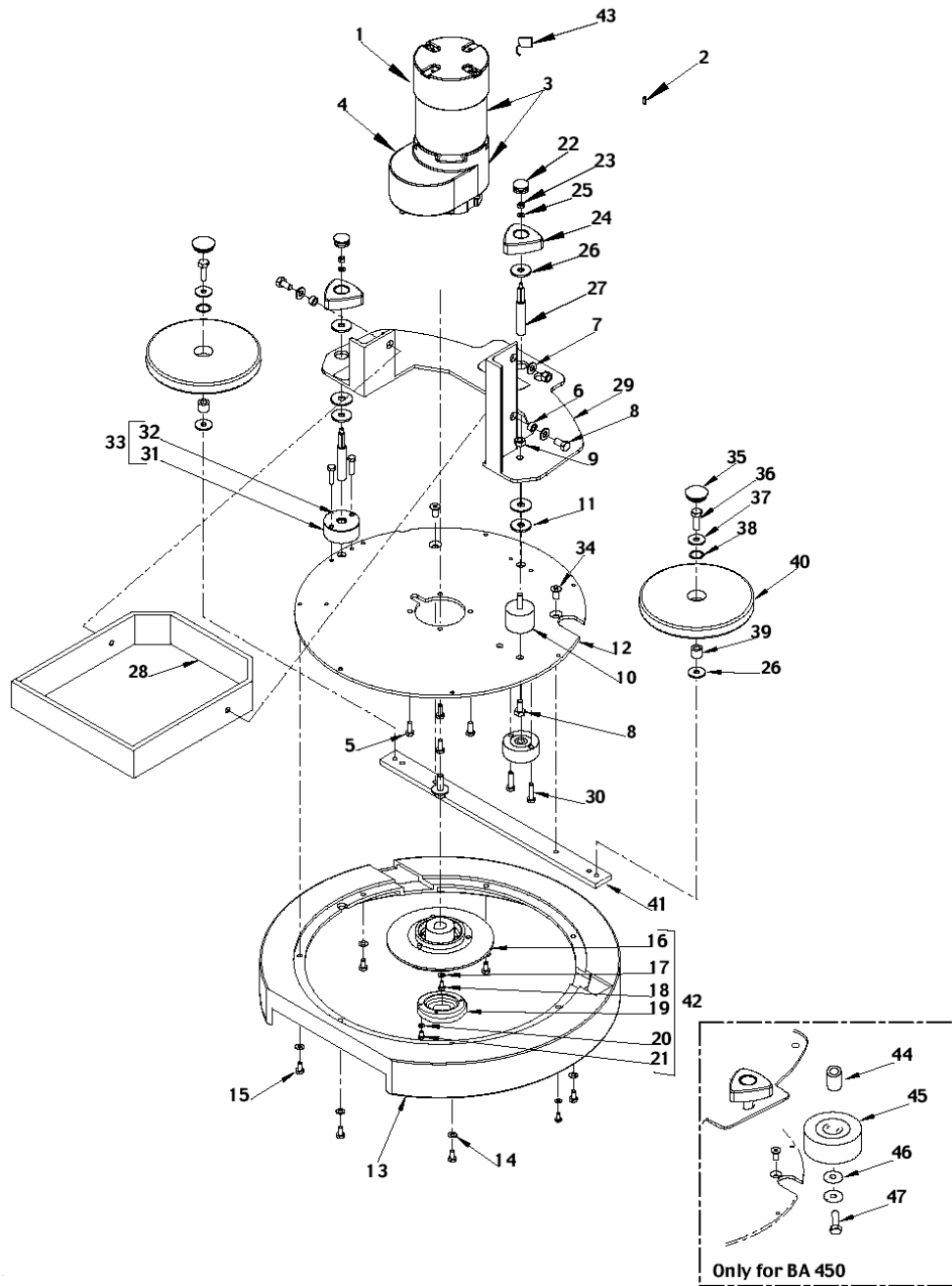
Resource notes:

Note: Pos No.0 means "Not shown"

Pos.	Product no	QTY	Description	Notes
00	9099671000	1	PAD HOLDER FLAT 20 508MM	
1	9097114000	1	MOTOR ELECTRIC 520W 24V	
2	1466147000	1	KEY 5X5X20 UNI6604A SIP	
3	909 5507 000	1	REDUCTION GEARMOTOR 520W 24V	
4	9099851000	1	REDUCTION GEAR	
5	L08600757	4	SCREW M6X16 HEX HD ISO4017 SCOTCH-GRIP	[1]
6	L08812325	4	SPACER 8.1X12X6.5 BRASS	
7	33023208	4	WASHER PLAIN M8 ISO7089 10 PCS SET	
8	L08274300	5	SCREW M8X16 HEX HD ISO4017 SCOTCH-GRIP	[2]
9	33005504	1	NUT HEX M8 MEDIUM ISO4032	
10	9100000868	1	VIBRATION DAMPING M8 60SH 2 PCS SET	
11	L08812719	1	WASHER PLAIN D.9.5X27X2.5 GALV.	[3]
12	L08812205	1	Base plate	[1]
13	L08812206	1	COVER BRUSH D.505MM PLAST.	[1]
14	1466530000	7	WASHER PLAIN M6X18 ISO7093 10 PCS SET	
15	L08326100	7	SCREW M6X12 HEX HD ISO4017 SCOTCH-GRIP	[3]
16	L08812306	1	HUB METAL F BRUSH	
17	145 9171 000	1	WASHER PLAIN M8X32X2.5 GALV UNI6593	
18	33003996	1	SCREW M8X30 HEX HD F/THD ISO4017	
19	L08812480	1	HUB PLAST. F BRUSH	
20	L08353300	3	WASHER SELF BLOCK DISK M6 DIN25201	[2]
21	909 5056 000	3	SCREW M6X20 CAP HD HEX SS ISO4762 SCOTCH	[1]
22	L08812426	2	PLUG FINNED D.22 PLASTIC BLACK	
23	33023655	2	NUT HEX M5 MEDIUM ISO4032 10PCS.SET	[3]
24	L08812203	2	KNOB	
25	L08812719	4	WASHER PLAIN D.9.5X27X2.5 GALV.	[3]
26	L08812718	2	WASHER PLAIN D.10X30X2 RUBBER	[2]
27	L08812706	2	PIN PLATE FIXING	
28	L08812218	1	Frame	[1]
29	L08812221	1	PLATE.BRUSH HOLDER	[1]
30	L08232600	2	SCREW M6X25 HEX HD ISO4017 SCOTCH-GRIP	[2]
31	L08812213	2	BUFFER F BRUSH HOLDER PLATE	
32	L08812779	1	PLATE.VIBRATION DAMPING	
33	L08812780	1	PLATE FIXING BRUSH KIT	
34	L08812399	2	SCREW M8X12 C/SUNK PHIL ISO7046 SCOTCH-G	[2]
35	L08812365	2	PLUG FINNED D.32 PLASTIC BLACK	
36	L08367300	2	SCREW M8X25 HEX HD ISO4017 SCOTCH-GRIP	[1]
37	33023660	2	WASHER PLAIN M8X24X2 ISO7093 5 PCS SET	
38	L08163400	2	SPRING WAVY D.15	[2]
39	909 5086 000	2	SPACER	[4]
39	L08812384	2	SPACER D.9X15 H.13 GALV.	[1]
40	L08812204	2	ROLLER BUMPER D.160 PLAST. BLACK	
41	L08812506	1	STRIP FITTING	[1]
41	909 5049 000	1	STRIP FITTING SS	[1]
42	L08812589	1	HUB BRUSH KIT	
43	L08603850	1	CARBON BRUSHES KIT 4 PCS	[3]

## Part Notes:

- [1] - GUARANTEE DATE EXPIRED
- [2] - NO LONGER AVAILABLE
- [3] - STOCK COVERS GUARANTEE
- [4] - Machine pruned 09.2006  
GUARANTEE DATE EXPIRED



Resource notes:

Note: Pos No.0 means "Not shown"

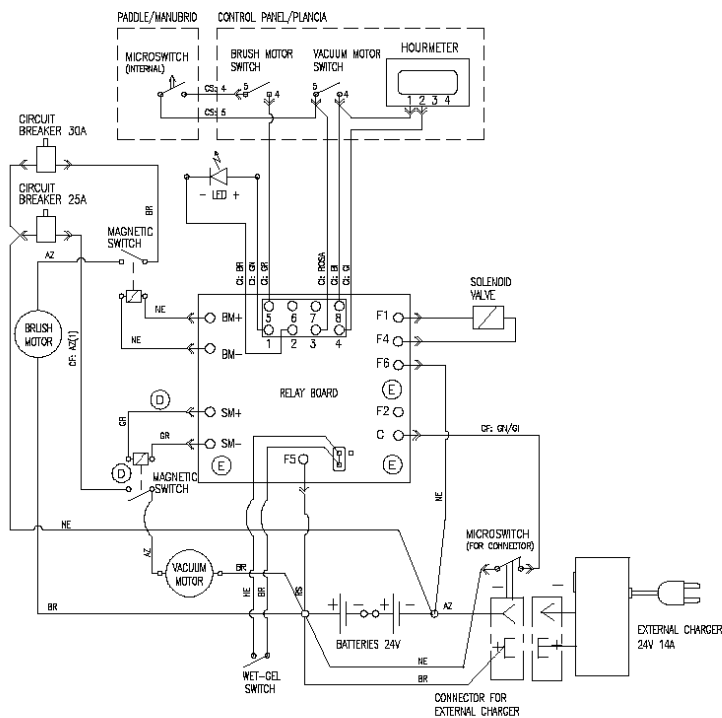
Pos.	Product no	QTY	Description	Notes
00	L08837017	1	PAD HOLDER BRISTLE 17 430MM CPL	
01	9097114000	1	MOTOR ELECTRIC 520W 24V	
02	1466147000	1	KEY 5X5X20 UNI6604A SIP	
03	909 5507 000	1	REDUCTION GEARMOTOR 520W 24V	
04	9099851000	1	REDUCTION GEAR	
05	L08600757	4	SCREW M6X16 HEX HD ISO4017 SCOTCH-GRIP	[1]
06	L08812325	4	SPACER 8.1X12X6.5 BRASS	
07	33023208	4	WASHER PLAIN M8 ISO7089 10 PCS SET	
08	L08274300	5	SCREW M8X16 HEX HD ISO4017 SCOTCH-GRIP	[2]
09	33005504	1	NUT HEX M8 MEDIUM ISO4032	
10	9100000868	1	VIBRATION DAMPING M8 60SH 2 PCS SET	
11	L08812719	1	WASHER PLAIN D.9.5X27X2.5 GALV.	[3]
12	L08812205	1	Base plate	[1]
13	L08812207	1	Brush cover BA 450	[1]
14	1466530000	7	WASHER PLAIN M6X18 ISO7093 10 PCS SET	
15	L08326100	7	SCREW M6X12 HEX HD ISO4017 SCOTCH-GRIP	[3]
16	L08812306	1	HUB METAL F BRUSH	
17	145 9171 000	1	WASHER PLAIN M8X32X2.5 GALV UNI6593	
18	33003996	1	SCREW M8X30 HEX HD F/THD ISO4017	
19	L08812480	1	HUB PLAST. F BRUSH	
20	L08353300	3	WASHER SELF BLOCK DISK M6 DIN25201	[2]
21	909 5056 000	3	SCREW M6X20 CAP HD HEX SS ISO4762 SCOTCH	[1]
22	L08812426	2	PLUG FINNED D.22 PLASTIC BLACK	
23	33023655	2	NUT HEX M5 MEDIUM ISO4032 10PCS.SET	[3]
24	L08812203	2	KNOB	
25	L08812719	4	WASHER PLAIN D.9.5X27X2.5 GALV.	[3]
26	L08812718	2	WASHER PLAIN D.10X30X2 RUBBER	[2]
27	L08812706	2	PIN PLATE FIXING	
28	L08812218	1	Frame	[1]
29	L08812221	1	PLATE.BRUSH HOLDER	[1]
30	L08232600	2	SCREW M6X25 HEX HD ISO4017 SCOTCH-GRIP	[2]
31	L08812213	2	BUFFER F BRUSH HOLDER PLATE	
32	L08812779	1	PLATE.VIBRATION DAMPING	
33	L08812780	1	PLATE FIXING BRUSH KIT	
34	L08812399	2	SCREW M8X12 C/SUNK PHIL ISO7046 SCOTCH-G	[2]
35	L08812365	1	PLUG FINNED D.32 PLASTIC BLACK	
36	L08367300	1	SCREW M8X25 HEX HD ISO4017 SCOTCH-GRIP	[1]
37	33023660	1	WASHER PLAIN M8X24X2 ISO7093 5 PCS SET	
38	L08163400	1	SPRING WAVY D.15	[2]
39	L08812384	1	SPACER D.9X15 H.13 GALV.	[1]
40	L08812204	1	ROLLER BUMPER D.160 PLAST. BLACK	
41	L08812505	1	SUPPORT FOR DEFLECTOR	[1]
42	L08812589	1	HUB BRUSH KIT	
43	L08603850	1	CARBON BRUSHES KIT 4 PCS	[3]
44	L08602461	1	SPACER D.6.8X9 H.26 GALV.	[1]
45	L08602460	1	ROLLER BUMPER PLAST.	
46	1466530000	2	WASHER PLAIN M6X18 ISO7093 10 PCS SET	
47	L08812504	1	SCREW M6X35 HEX HD ISO4014 SCOTCH-GRIP	[1]

## Part Notes:

- [1] - GUARANTEE DATE EXPIRED  
 [2] - NO LONGER AVAILABLE  
 [3] - STOCK COVERS GUARANTEE

SCHEMA ELETTRICO/ELECTRIC DIAGRAM (BA450/530) 08812799

(senza trazione senza caricabatteria/without traction without charger/battery)



CI: CABLE INTERNAL-CAVI INTERNI  
 CF: CABLE FUSE-CAVI FUSIBILI  
 CS: CABLE SWITCH HOUSING-CAVI INTERRUTTORI

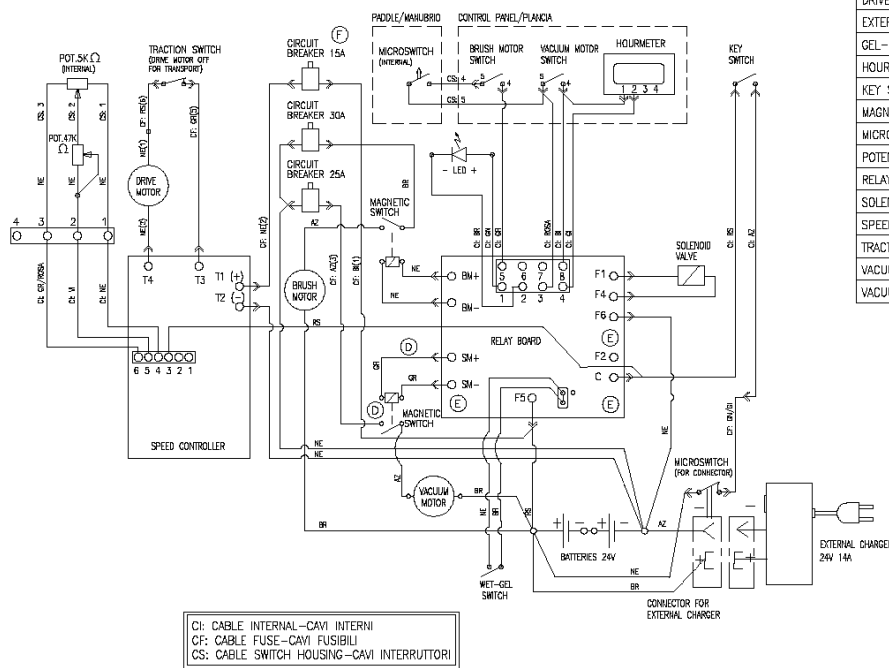
24V BATTERIES-BATTERIA 24V
BRUSH MOTOR -MOTORE SPAZZOLA
BRUSH MOTOR SWITCH-INTERRUTTORE MOTORE SPAZZOLA
CIRCUIT BREAKER-FUSIBILE DI RIPRISTINO
CONNECTOR FOR CHARGER -CONNETTORE PER CARICABATTERIA
EXTERNAL CHARGER-CARICABATTERIA ESTERNO
GEL-WET SWITCH -INTERRUTTORE TIPO BATTERIE
HOURMETER -CONTORE
MAGNETIC SWITCH-TELERUTTORE
MICROSWITCH -MICROINTERRUTTORE
RELAY BOARD-SCHEDA RELE'
SOLENOID VALVE-ELETTROVALVOLA
VACUUM MOTOR-MOTORE ASPIRAZIONE
VACUUM MOTOR SWITCH-INTERRUTTORE MOTORE ASPIRAZIONE

TABELLA COLORI	COLORS CODES
AZ =	BLEU
BI =	WHITE
GI =	YELLOW
GR =	GREY
BR =	BROWN
NE =	BLAK
ROSA =	PINK
RS =	RED
VI =	VIOLET
OR =	ORANGE
GN =	GREEN

---

Pos.	Product no	QTY	Description	Notes
------	------------	-----	-------------	-------

SCHEMA ELETTRICO/ELECTRIC DIAGRAM (BA450/530) 08812798  
 (con trazione senza caricabatteria/with traction without charger/battery)



- 24V BATTERIES - BATTERIA 24V
- BRUSH MOTOR - MOTORE SPAZZOLA
- BRUSH MOTOR SWITCH - INTERRUOTTORE MOTORE SPAZZOLA
- CIRCUIT BREAKER - FUSIBILE DI RIPRISTINO
- CONNECTOR FOR CHARGER - CONNETTORE PER CARICABATTERIA
- DRIVE MOTOR - MOTORE TRAZIONE
- EXTERNAL CHARGER - CARICABATTERIA ESTERNO
- GEL-WET SWITCH - INTERRUOTTORE TIPO BATTERIE
- HOURMETER - CONTAORE
- KEY SWITCH - INTERRUOTTORE CHIAVE ACCENSIONE
- MAGNETIC SWITCH - TELERUTTORE
- MICROSWITCH - MICROINTERRUPTORE
- POTENZIOMETRO - POTENZIOMETRO
- RELAY BOARD - SCHEDE RELE'
- SOLENOID VALVE - ELETTROVALVOLA
- SPEED CONTROLLER - CONTROLLO TRAZIONE
- TRACTION SWITCH - INTERRUOTTORE TRAZIONE
- VACUUM MOTOR - MOTORE ASPIRAZIONE
- VACUUM MOTOR SWITCH - INTERRUOTTORE MOTORE ASPIRAZIONE

TABELLA COLORI - COLORS CODES	
AZ	BLUE
BI	WHITE
GI	YELLOW
GR	GREY
BR	BROWN
NE	BLAK
ROSA	PINK
RS	RED
VI	VIOLET
OR	ORANGE
GN	GREEN

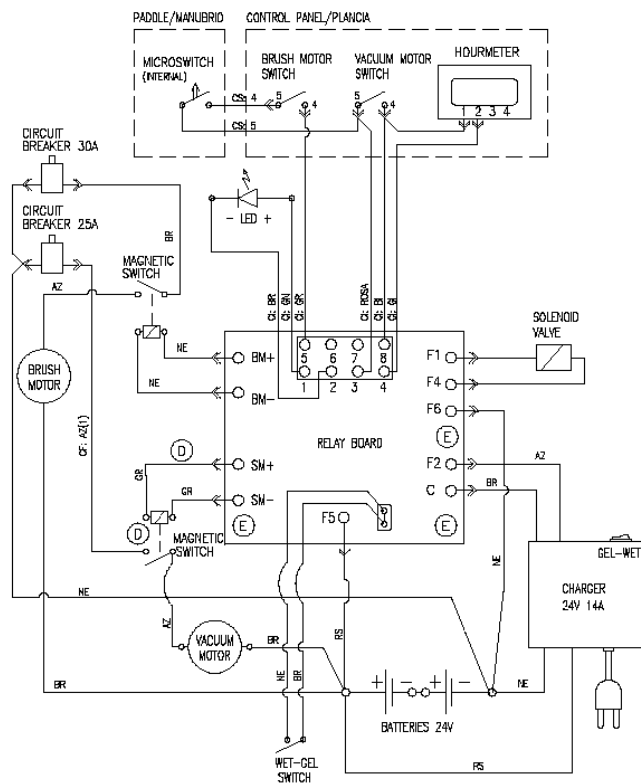
CI: CABLE INTERNAL - CAVI INTERNI  
 CF: CABLE FUSE - CAVI FUSIBILI  
 CS: CABLE SWITCH HOUSING - CAVI INTERRUOTTORI

---

Pos.	Product no	QTY	Description	Notes
------	------------	-----	-------------	-------

SCHEMA ELETTRICO/ELECTRIC DIAGRAM (BA450/530) 08812797

(senza trazione ma con caricabatteria/without traction with charger/battery)



24V BATTERIES	-BATTERIA 24V
BRUSH MOTOR	-MOTORE SPAZZOLA
BRUSH MOTOR SWITCH	-INTERRUTTORE MOTORE SPAZZOLA
CHARGER BATTERY	-CARICABATTERIA
CIRCUIT BREAKER	-FUSIBILE DI RIPRISTINO
GEL-WET SWITCH	-INTERRUTTORE TIPO BATTERIE
HOURMETER	-CONTAORE
MAGNETIC SWITCH	-TELERUTTORE
MICROSWITCH	-MICROINTERRUTTORE
RELAY BOARD	-SCHEDE RELE'
SOLENOID VALVE	-ELETTROVALVOLA
VACUUM MOTOR	-MOTORE ASPIRAZIONE
VACUUM MOTOR SWITCH	-INTERRUTTORE MOTORE ASPIRAZIONE

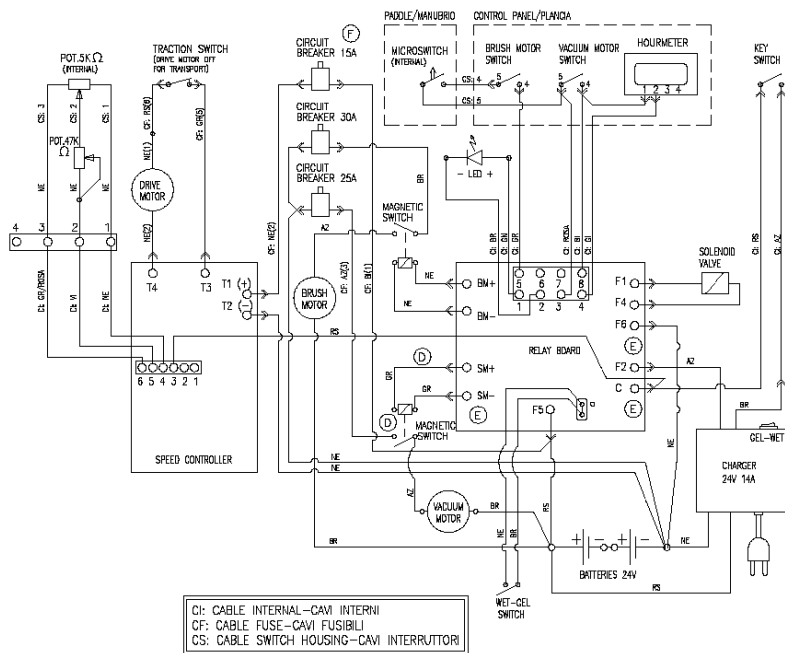
TABELLA COLORI	COLORS CODES
AZ =	BLUE
BI =	WHITE
GI =	YELLOW
GR =	GREY
BR =	BROWN
NE =	BLAK
ROSA =	PINK
RS =	RED
VI =	VIOLET
OR =	ORANGE
GN =	GREEN

CI: CABLE INTERNAL-CAVI INTERNI  
 CF: CABLE FUSE-CAVI FUSIBILI  
 CS: CABLE SWITCH HOUSING-CAVI INTERRUTTORI

---

Pos.	Product no	QTY	Description	Notes
------	------------	-----	-------------	-------

SCHEMA ELETTRICO/ELECTRIC DIAGRAM (BA450/530) 08812796  
(con trazione e caricabatteria/with traction and charger/battery)



CI: CABLE INTERNAL-CAVI INTERNI  
CF: CABLE FUSE-CAVI FUSIBILI  
CS: CABLE SWITCH HOUSING-CAVI INTERRUTTORI

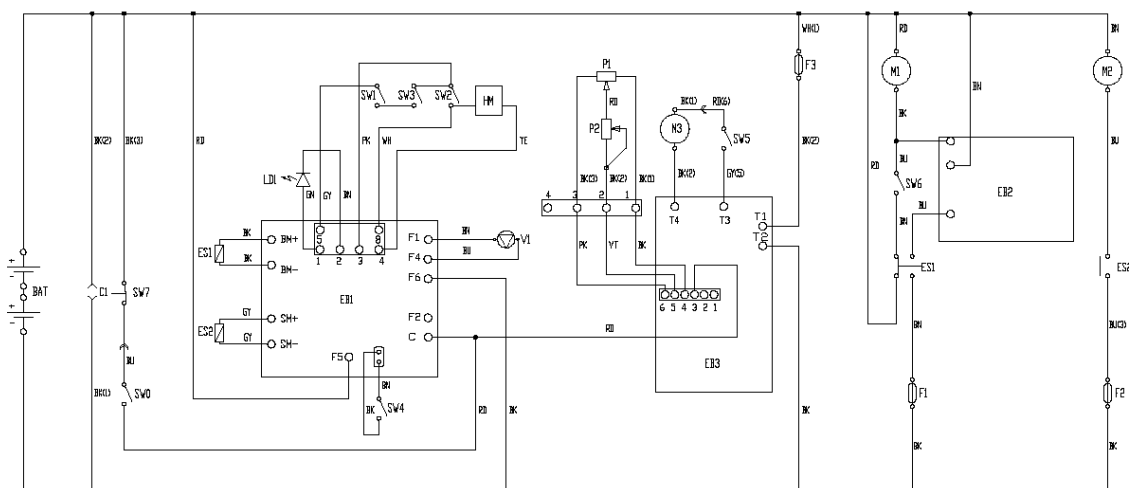
- 24V BATTERIES-BATTERIA 24V
- BRUSH MOTOR-MOTORE SPAZZOLA
- BRUSH MOTOR SWITCH-INTERRUTTORE MOTORE SPAZZOLA
- CHARGER BATTERY-CARICABATTERIA
- CIRCUIT BREAKER-FUSIBILE DI RIPRISTINO
- DRIVE MOTOR-MOTORE TRAZIONE
- GEL-WET SWITCH-INTERRUTTORE TIPO BATTERIE
- HOURLMETER-CONTADRE
- KEY SWITCH-INTERRUTTORE CHIAVE ACCENSIONE
- MAGNETIC SWITCH-TELERUTTORE
- MICROSWITCH-MICROINTERRUTTORE
- POTENZIOMETER-POTENZIOMETRO
- RELAY BOARD-SCHEDA RELE'
- SOLENOID VALVE-ELETTROVALVOLA
- SPEED CONTROLLER-CONTROLLO TRAZIONE
- TRACTION SWITCH-INTERRUTTORE TRAZIONE
- VACUUM MOTOR-MOTORE ASPIRAZIONE
- VACUUM MOTOR SWITCH-INTERRUTTORE MOTORE ASPIRAZIONE

TABELLA COLORI COLORES CODES	
AZ	BLUE
BI	WHITE
GI	YELLOW
CR	GREY
BR	BROWN
NE	BLACK
ROSA	PINK
RS	RED
VI	VIOLET
OR	ORANGE
GN	GREEN

---

Pos.	Product no	QTY	Description	Notes
------	------------	-----	-------------	-------

SCHEMA ELETTRICO  
BA610 senza caricabatterie  
909 5017 000

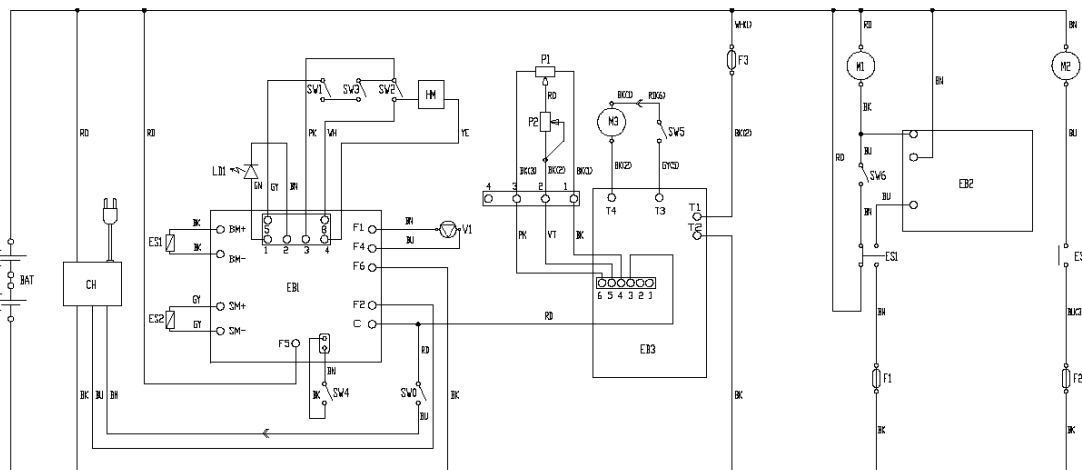


COMPONENTS			
BT	24V BATTERIES	MP	VACUUM MOTOR
CI	EXTERNAL BATTERIES CHARGER CONNECTOR	N2	BRUSH MOTOR
BK	BLACK nero	EB1	LOGIC ELECTRONIC BOARD
BU	BLUE azzurro	EB2	BRUSHES ELECTRONIC BOARD
BT	BROWN marrone	EB3	DRIVE ELECTRONIC BOARD
BG	GREEN verde	ES1	BRUSHES ELECTRONIC SWITCH
BY	GREY grigio	ES2	VACUUM ELECTRONIC SWITCH
BO	ORANGE arancio	F1	BRUSHES MOTOR CIRCUIT BREAKER (10A)
BK	ROSE rosa	F2	VACUUM MOTOR CIRCUIT BREAKER (25A)
RE	RED rosso	F3	DRIVE MOTOR CIRCUIT BREAKER (15A)
VI	VIOLET viola	HM	HOURMETER
WH	WHITE bianco	LM	BATTERIES STATUS LED
YL	YELLOW giallo	M1	BRUSHES MOTOR
		N1	BRUSHES MOTOR
		P1	DRIVE SPEED POTENTIOMETER (5ohm)
		P2	DRIVE MAX SPEED POTENTIOMETER (40kOhm)
		SH	KEY SWITCH
		SW1	BRUSHES SWITCH
		SW2	VACUUM SWITCH
		SW3	FIXABLE MICROSCHWITCH
		SW4	DRIVE BATTERIES SELECTOR
		SW5	TRACTION SWITCH
		SW6	CLICK-OFF SWITCH
		SW7	EXTERNAL CHARGER MICROSWITCH
		VI	WATER ELECTROVALVE

---

Pos.	Product no	QTY	Description	Notes
------	------------	-----	-------------	-------

SCHEMA ELETTRICO  
BA610 con caricabatterie  
909 5018 000



COLOR CODES	COMPONENTS		
BK BLACK nero	M1 24V BATTERIES	M2 VACUUM MOTOR	
BU BLUE azzurro	DH 24V 12A BATTERY CHARGER	M3 BRUSH MOTOR	
BN BROWN marrone	E1 LOGIC ELECTRONIC BOARD	P1 BRUSH SPEED POTENTIOMETER (500ohm)	
EN GREEN verde	E2 BRUSHES ELECTRONIC BOARD	P2 BRUSH MAX SPEED POTENTIOMETER (400ohm)	
GY GREY grigio	E3 BRUSH ELECTRONIC BOARD	SM KEY SWITCH	
OG ORANGE arancione	ES1 BRUSHES ELECTRON SWITCH	SW1 BRUSHES SWITCH	
PK PINK rosa	ES2 VACUUM ELECTRON SWITCH	SW2 VACUUM SWITCH	
RD RED rosso	F1 BRUSHES MOTOR CIRCUIT BREAKER (25A)	SW3 PADLOCK MIDSWITCH	
VT VIOLET viola	F2 VACUUM MOTOR CIRCUIT BREAKER (25A)	SW4 P/B/GEL BATTERIES RELAY/DR	
WH WHITE bianco	F3 BRUSH MOTOR CIRCUIT BREAKER (25A)	SW5 TRACTION SWITCH	
YE YELLOW giallo	H1 HOURMETER	SW6 CLICK-OFF SWITCH	
	L1 BATTERIES STATUS LED	V1 WATER ELECTROVALVE	
	M4 BRUSHES MOTOR		

---

Pos.	Product no	QTY	Description	Notes
------	------------	-----	-------------	-------

